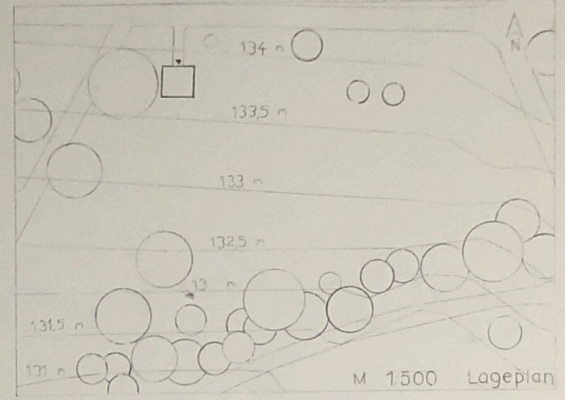


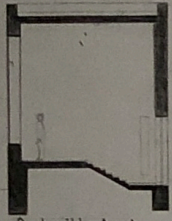
FOCUS GUNTHERSBURG

- quadratischer Grundriss
- flache Treppe fügt sich in Raum
- sich selbst tragende Schale
- Bodenbelag spiegelt
- Konstruktion konsequent
- Blickbezug in den Park durch großes rundes Fenster
- Wirkung vergleichbar mit einem Objektiv

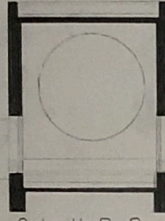
- verkleideter Sockelbereich mit Klinker
- Blockverband aus Recycling-Ziegel der Großmarkthalle im NF-Format



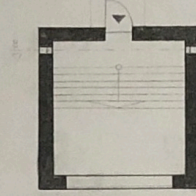
M 1:100



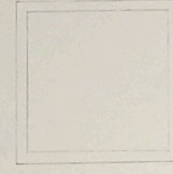
Schnitt A-A



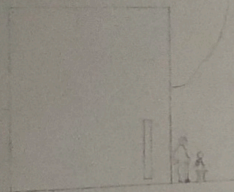
Schnitt B-B



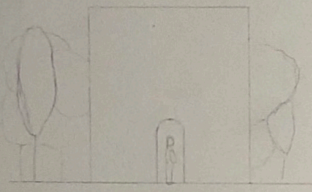
Grundriss



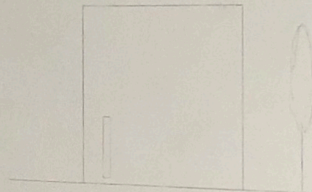
Draufsicht



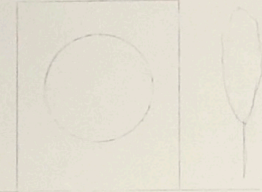
Osten



Norden

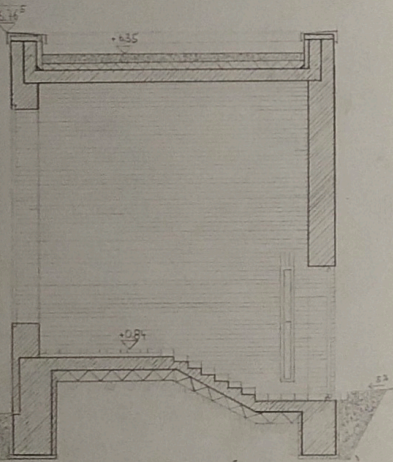


Westen

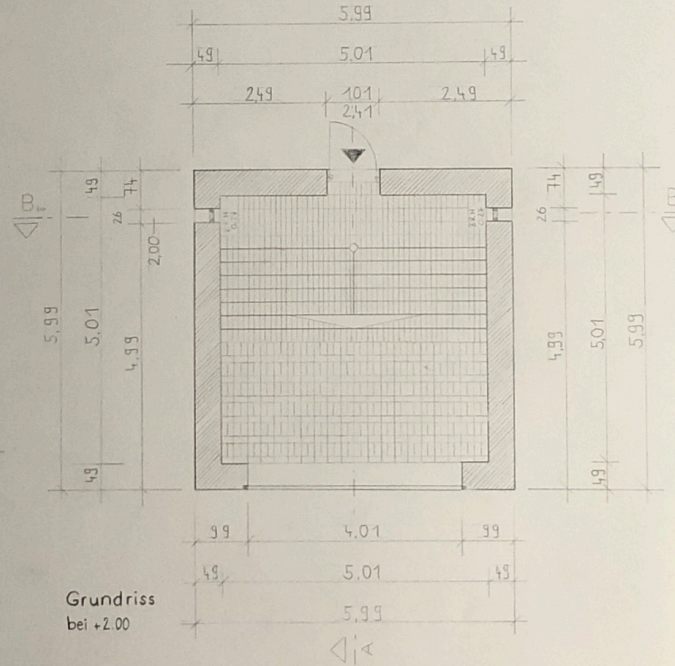


Süden

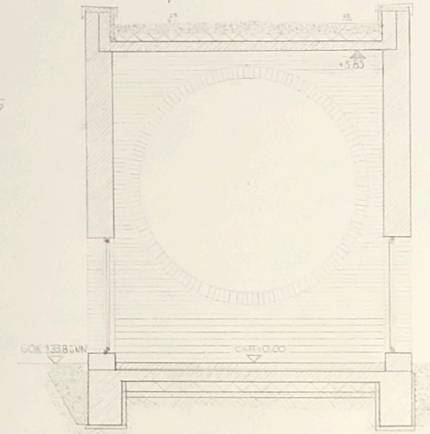
M 1:50



Schnitt A-A



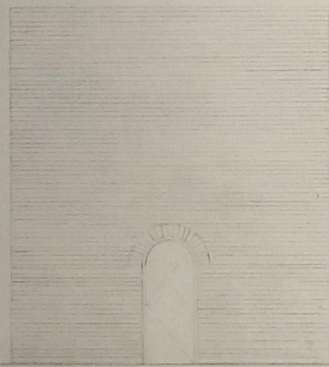
Grundriss
bei +2.00



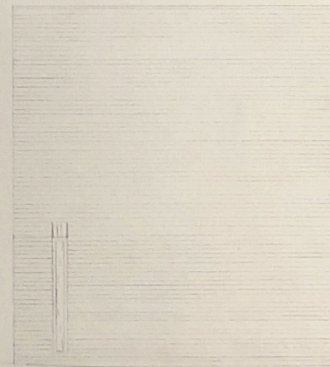
Schnitt B-B



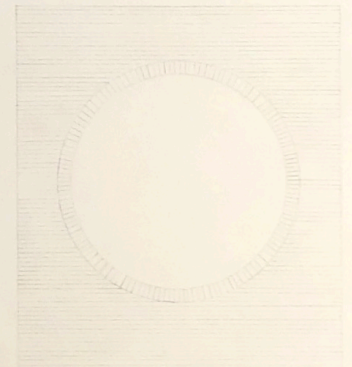
Osten



Norden



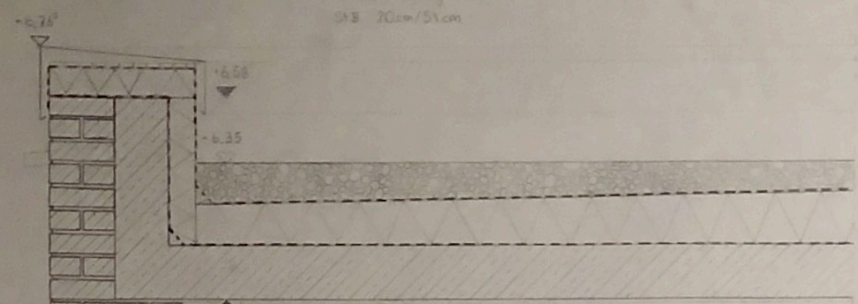
Westen



Süden

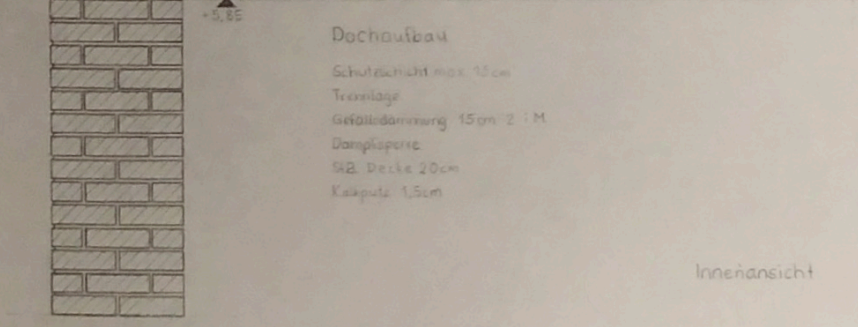
Attikaufbau

- Attikablock 1,5cm
- OSB-Platte 2cm
- Abdichtung Bitumen
- Wärmedämmung 10cm
- SB 20cm/5cm



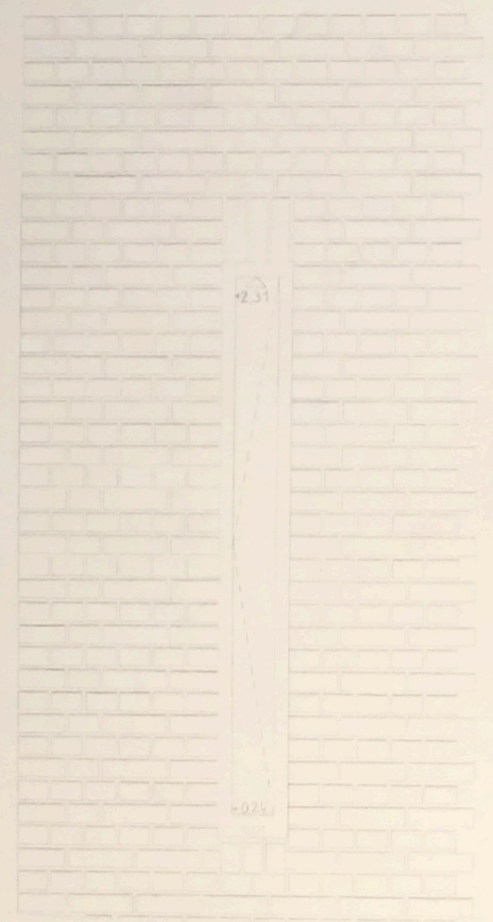
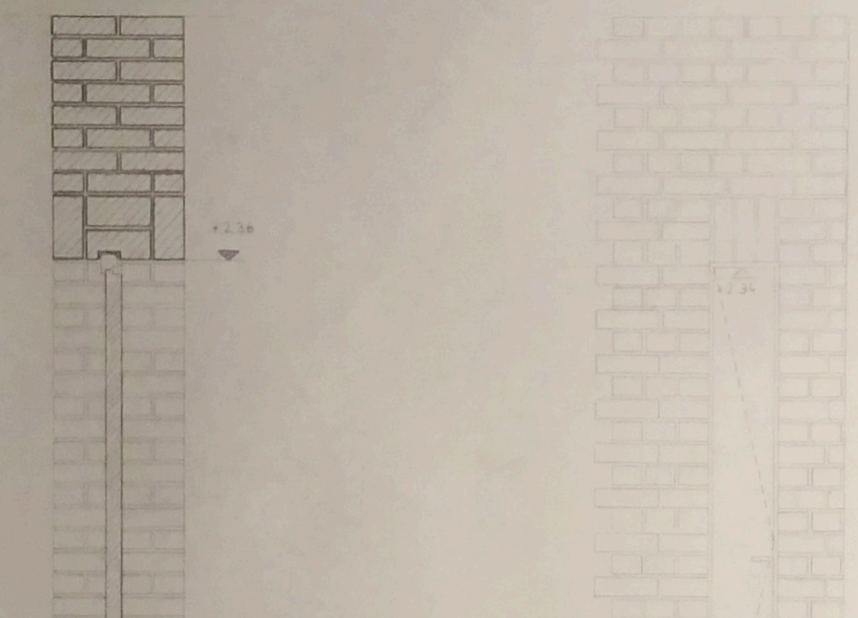
Dachaufbau

- Schutzschicht max. 10cm
- Trennlage
- Gefälledämmung 15cm 2:1 M
- Dampfsperre
- SB-Decke 20cm
- Kalkputz 1,5cm



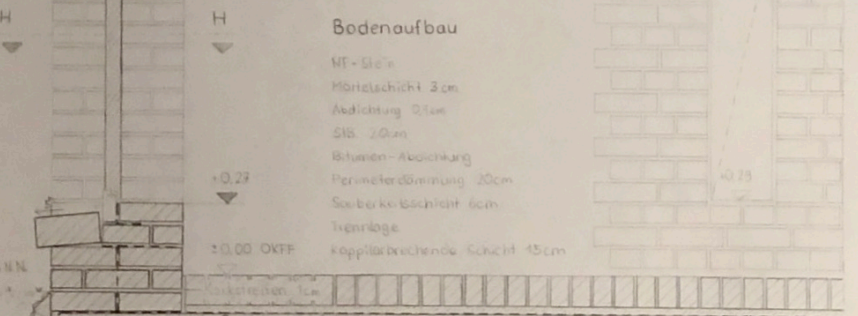
Innenansicht

Außenansicht



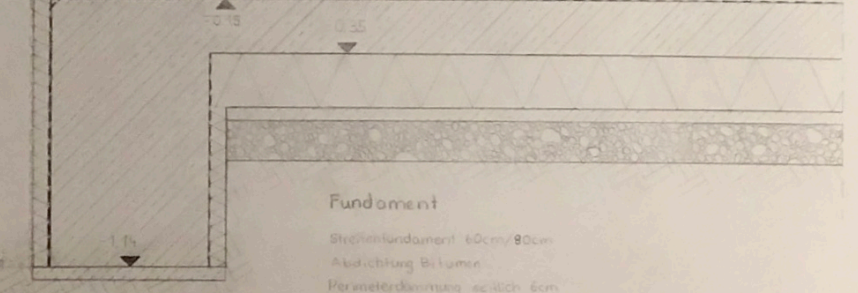
Bodenaufbau

- MT-Slein
- Mörtelschicht 3cm
- Abdichtung Bitum
- SB 20cm
- Bitumen-Abdichtung
- Perimeterdämmung 20cm
- Sauwerkschicht 6cm
- Trennlage
- Kopplage
- Kopplagebrechende Schicht 15cm



Fundament

- Streifenfundament 40cm/80cm
- Abdichtung Bitumen
- Perimeterdämmung schicht 6cm
- Daubwerkschicht 6cm
- Wasserbahn



Schnitt H-H

