

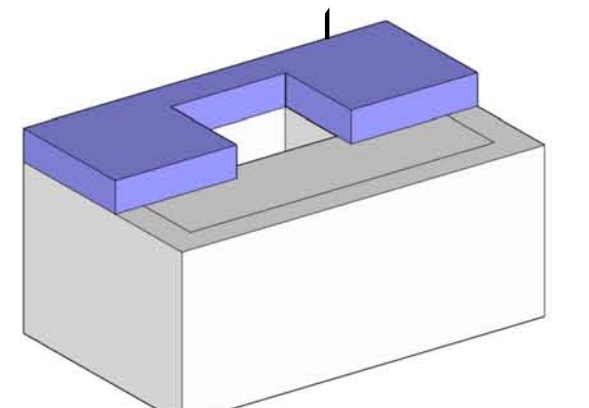
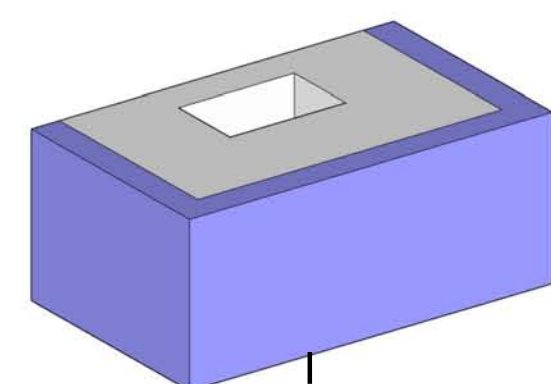
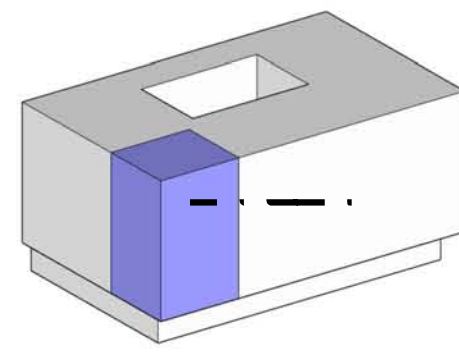
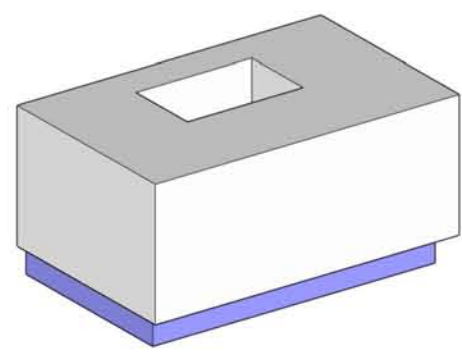
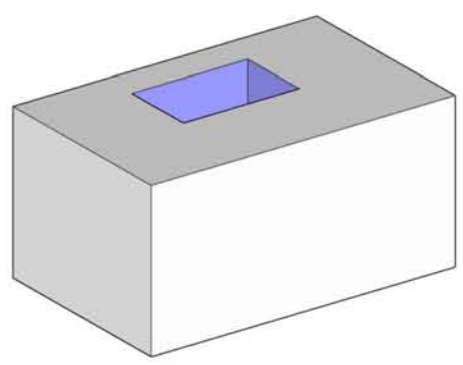
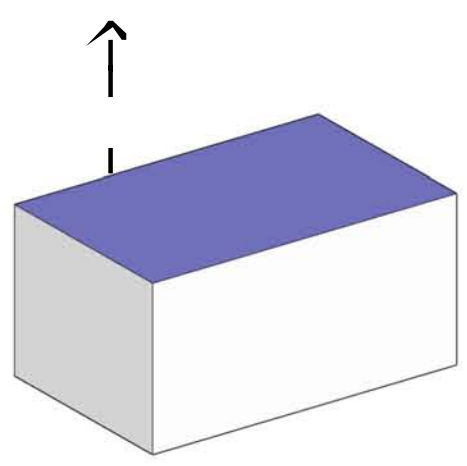
The Fællesskab Co-housing



Up to 6th floor

Courtyard

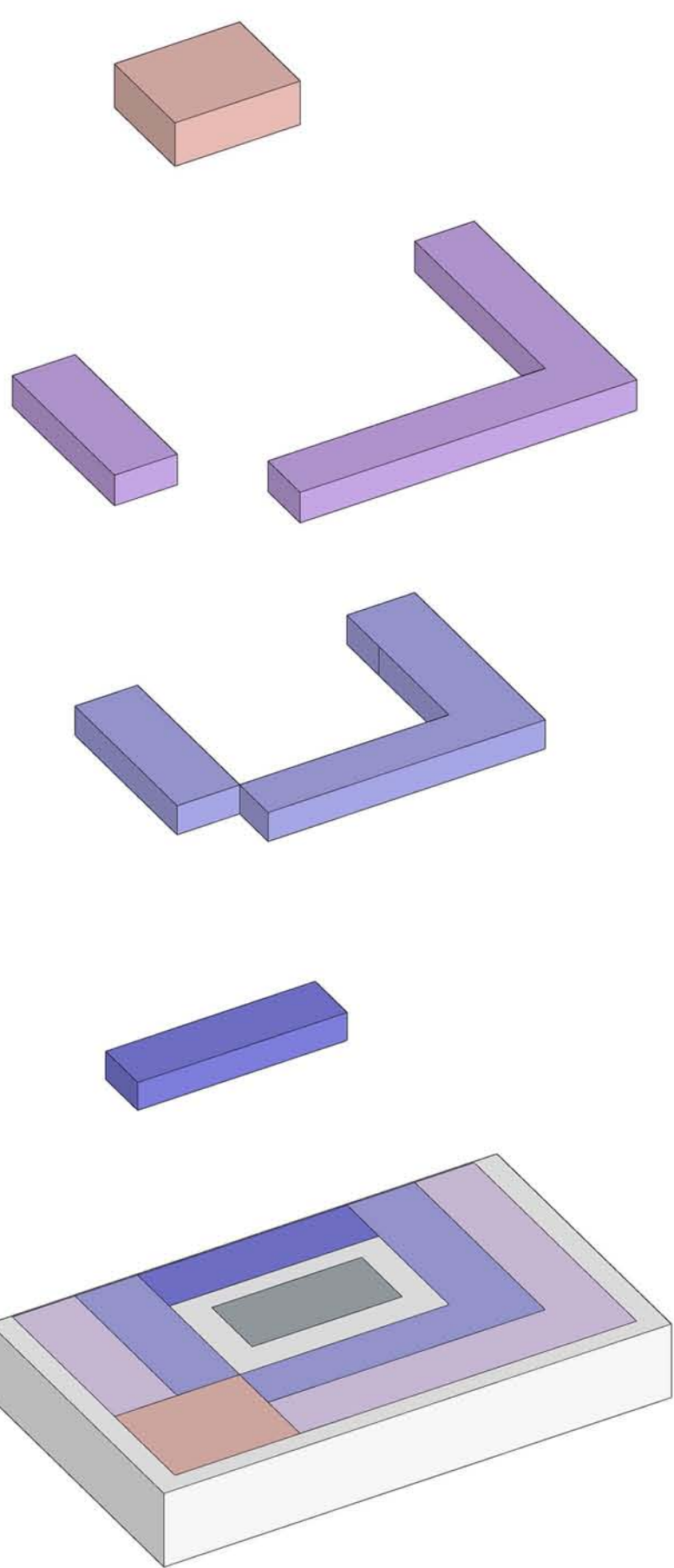
Rooftop



Open ground floor plan

Common spaces

Boardwalk

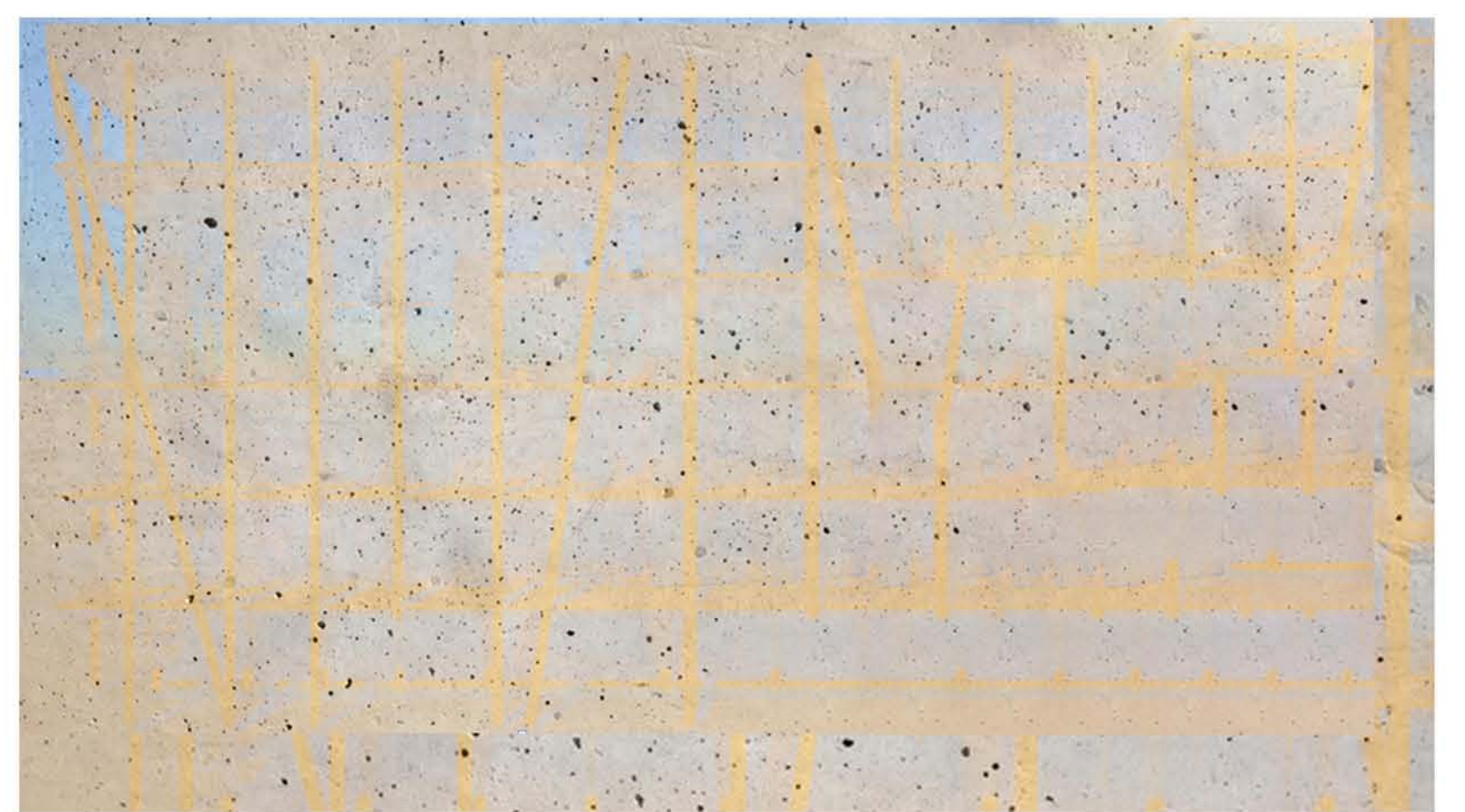


Common room

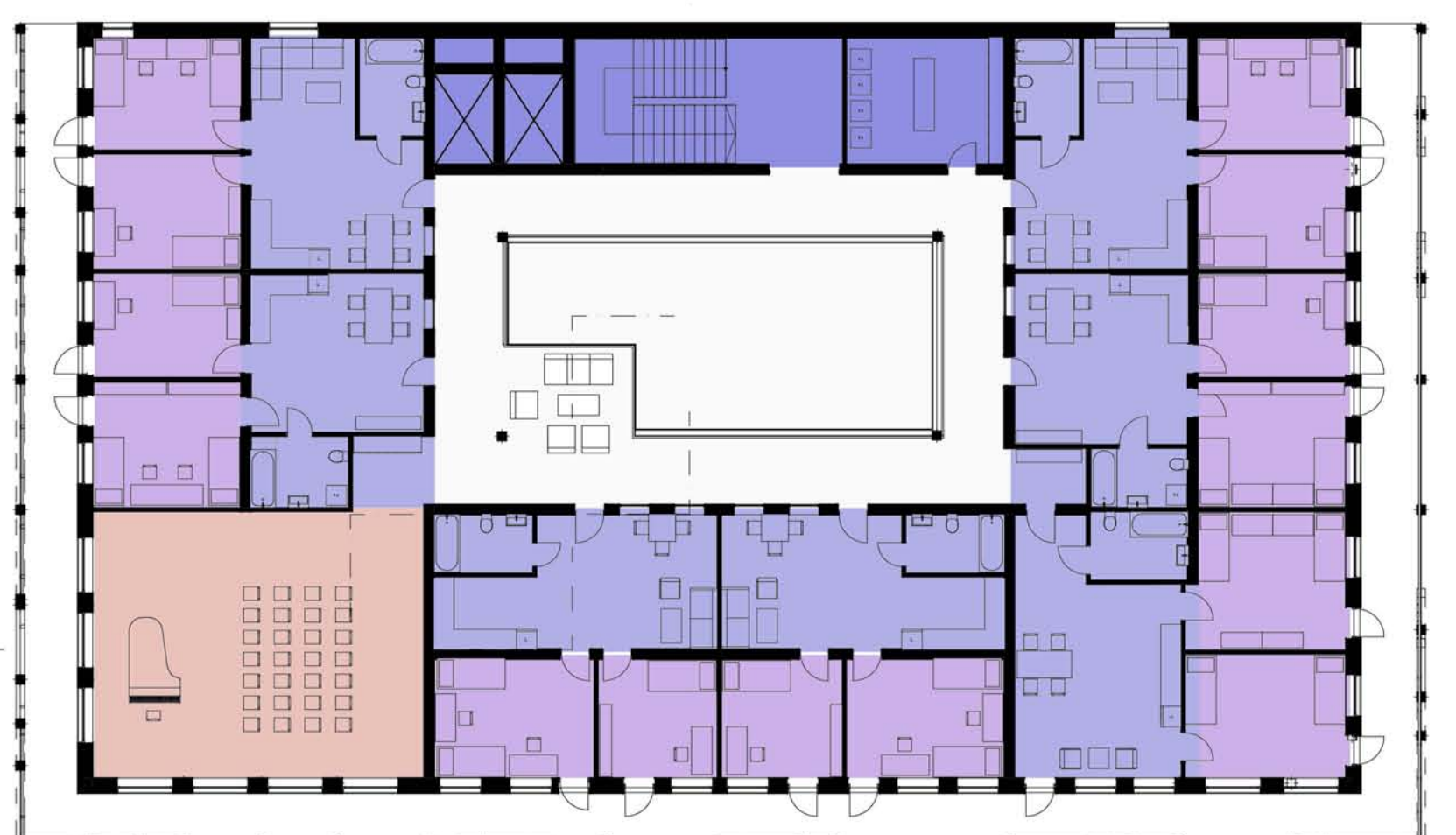
Private space

Semi private shared space

Circulation path



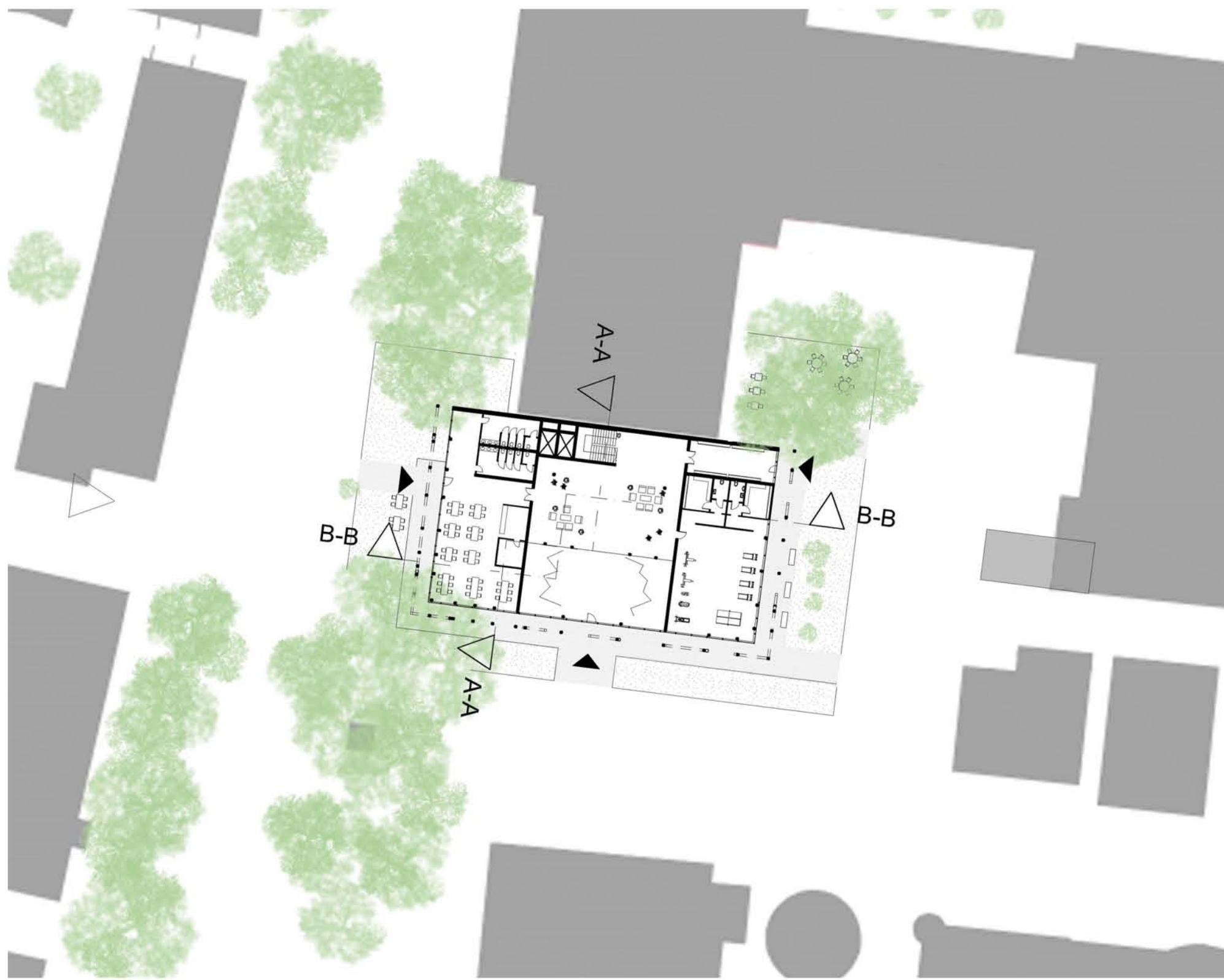
Fachwerk inspiration



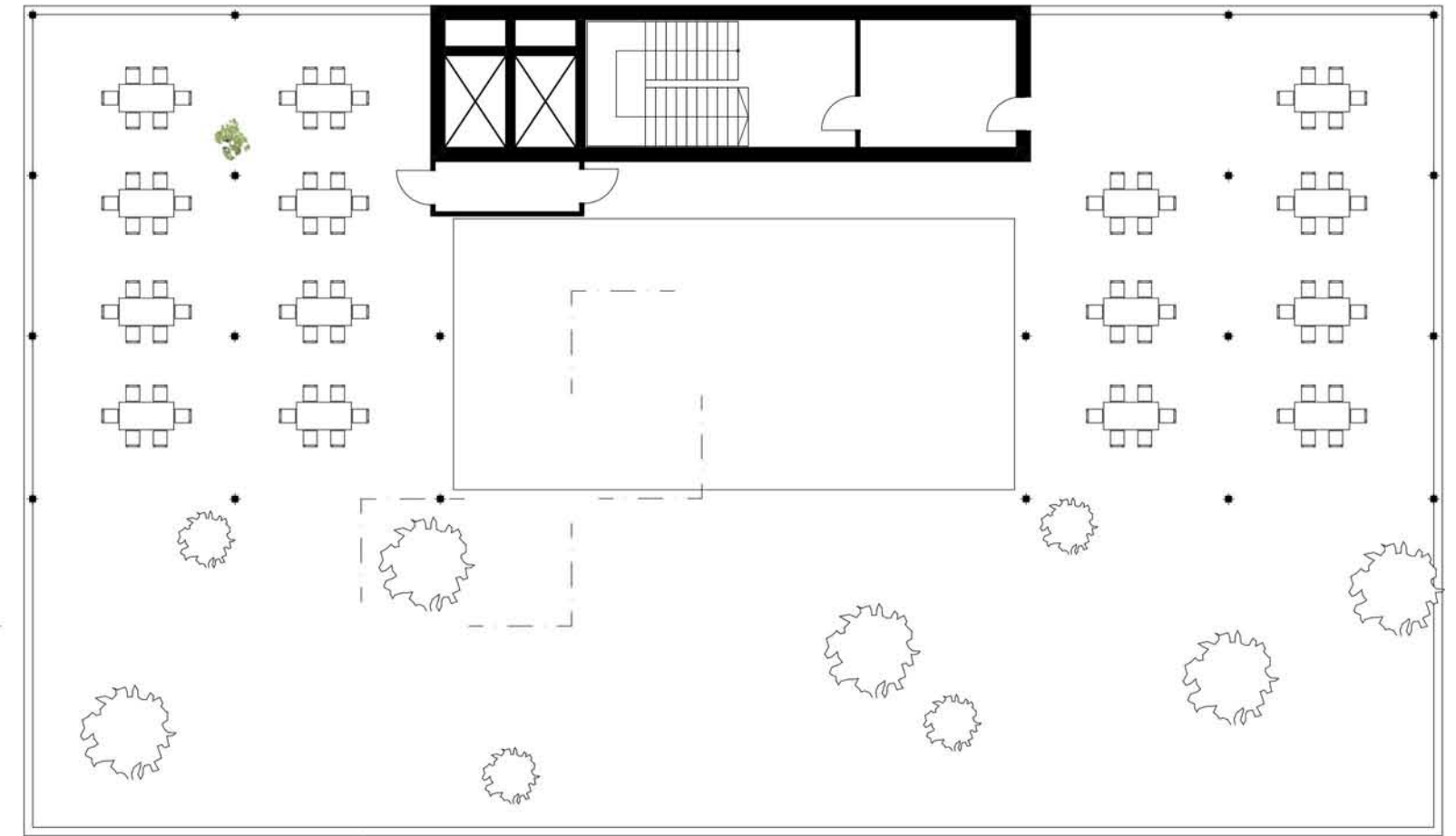
1st Floor plan

The Fællesskab Co-housing

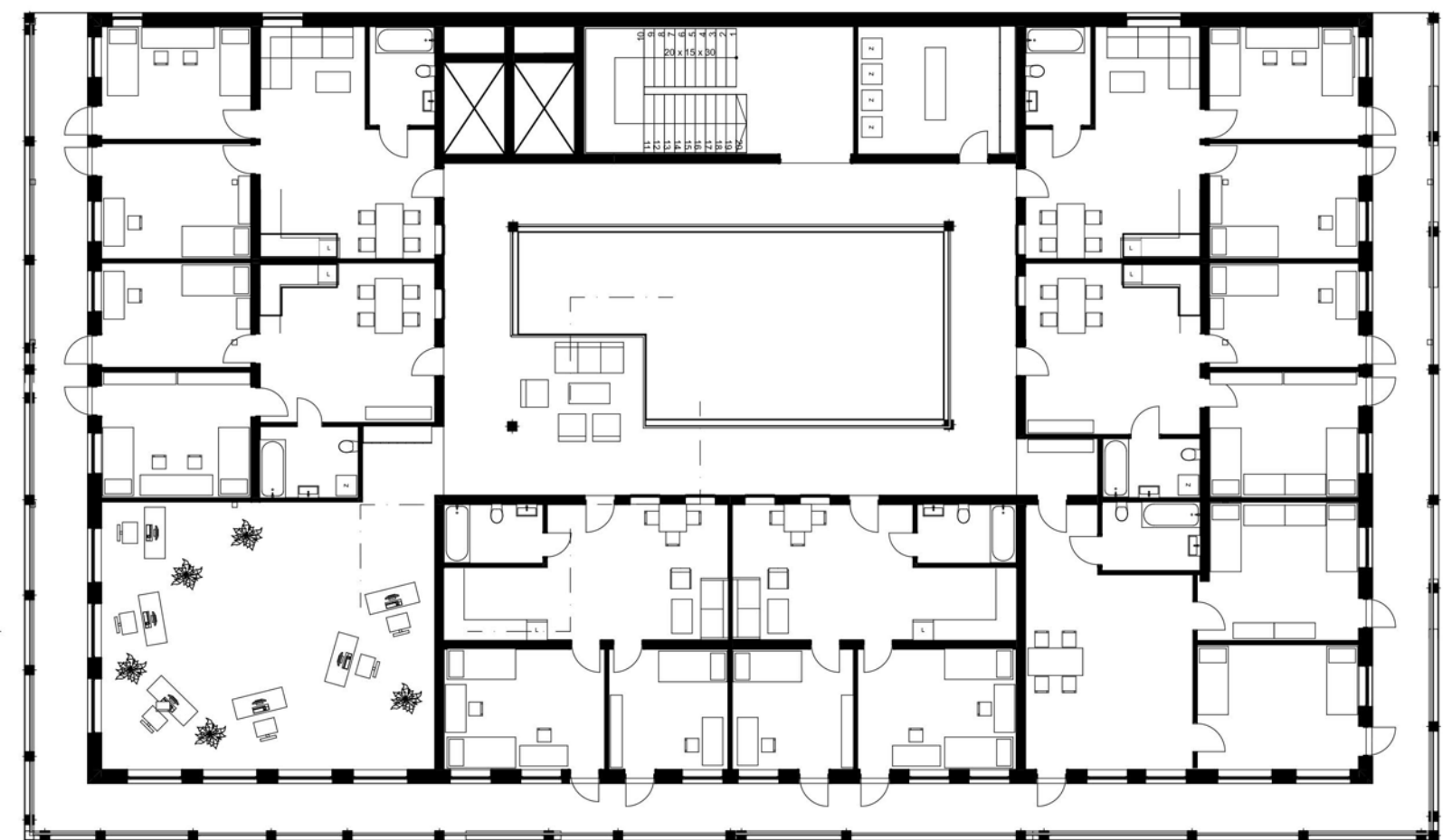
Location Bockenheim
Number of housing units 35
Groundfloor area 850 m
Typical floor area 790 m
5 Floors + Sundeck



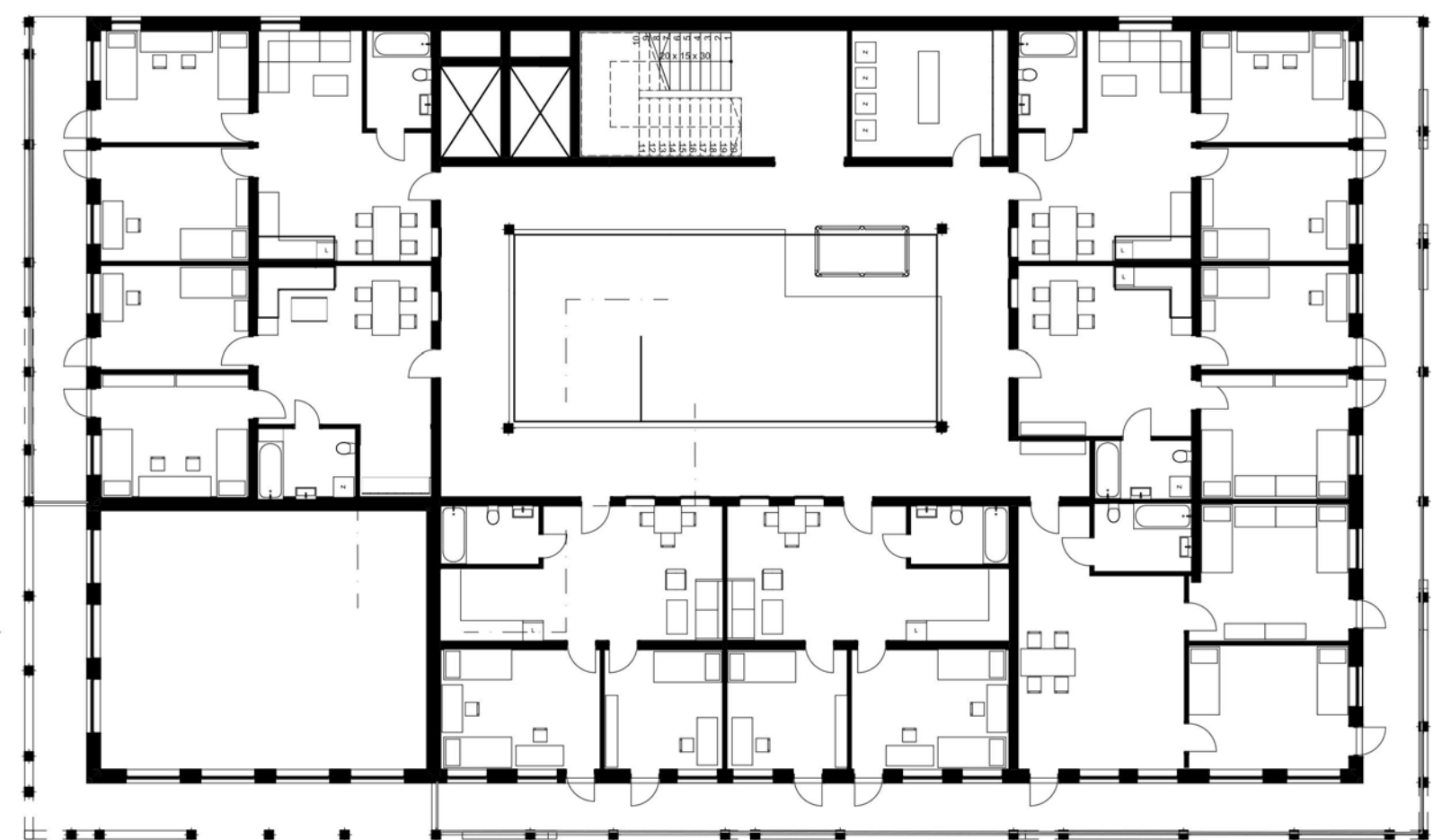
Location in Bockenheim District 1:500



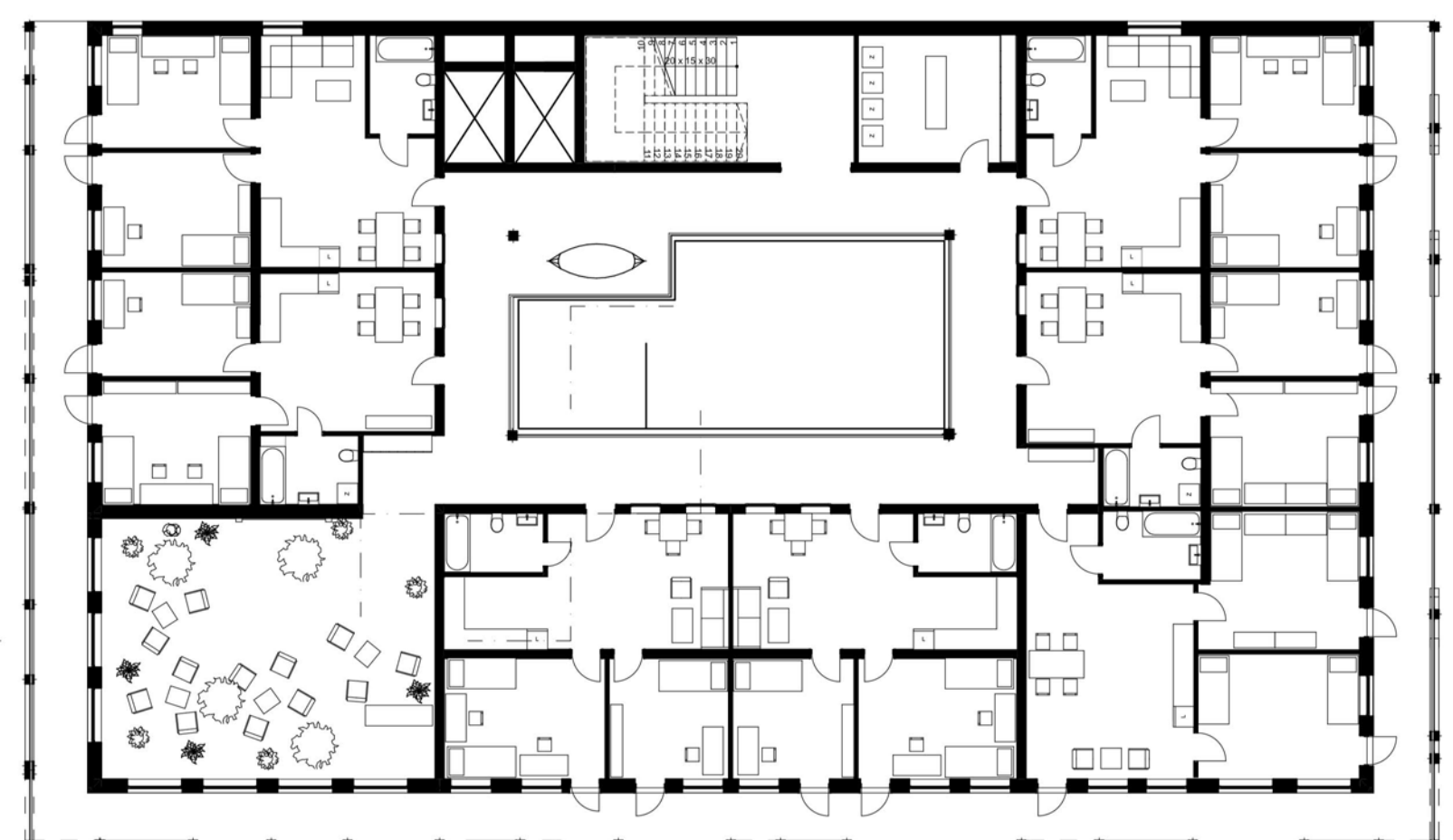
Rooftop plan 1:200



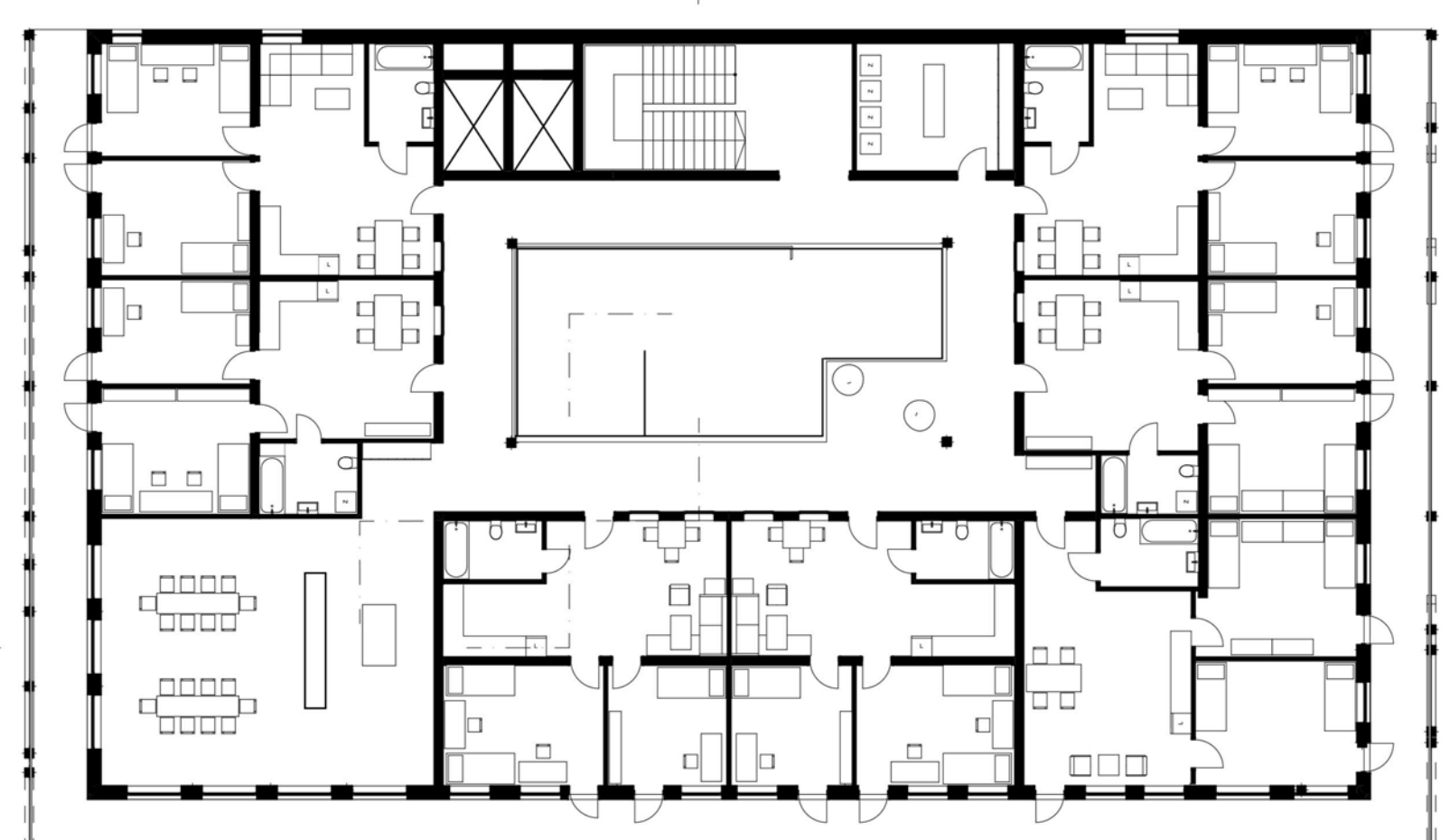
5th floor plan 1:200



4th floor plan 1:200



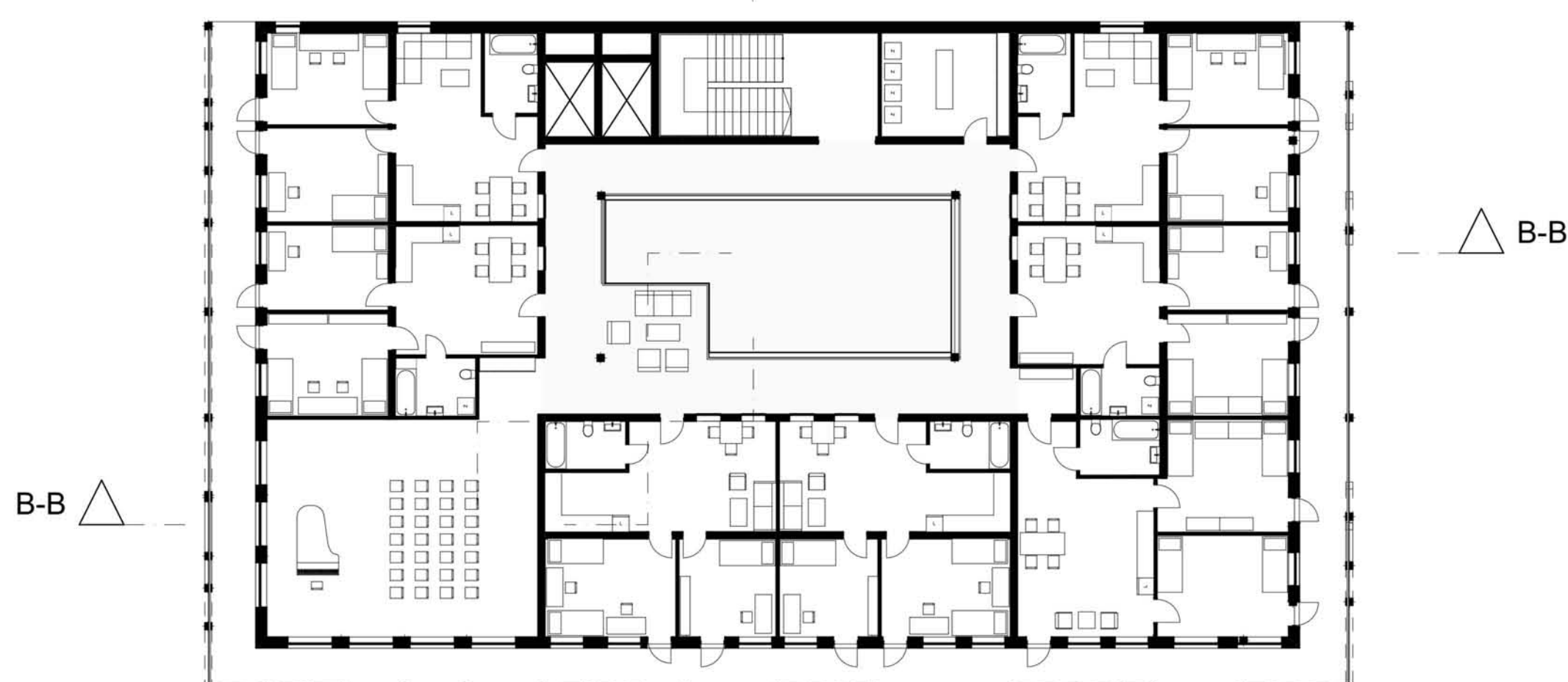
Third floor plan 1:200



Second floor plan 1:200

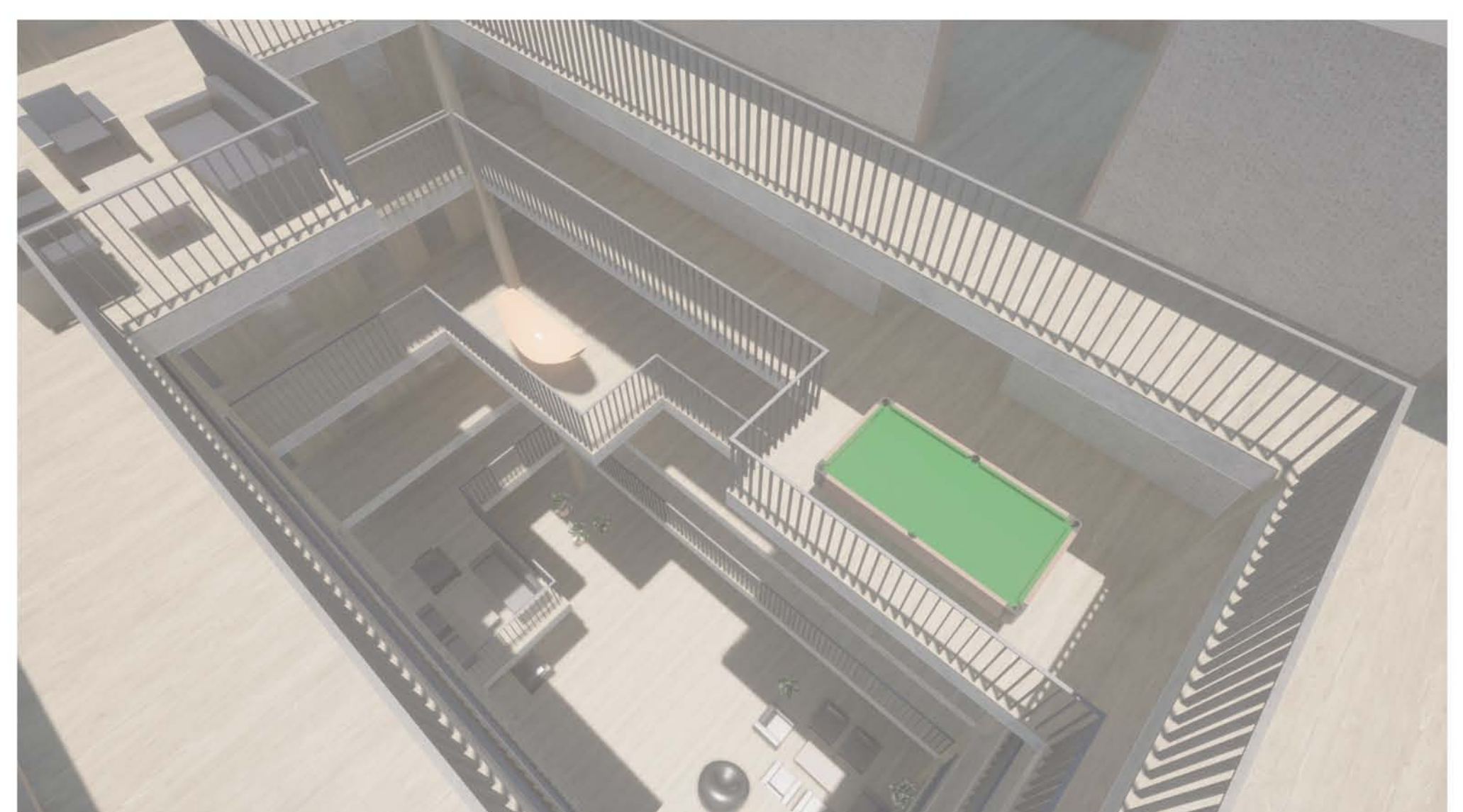
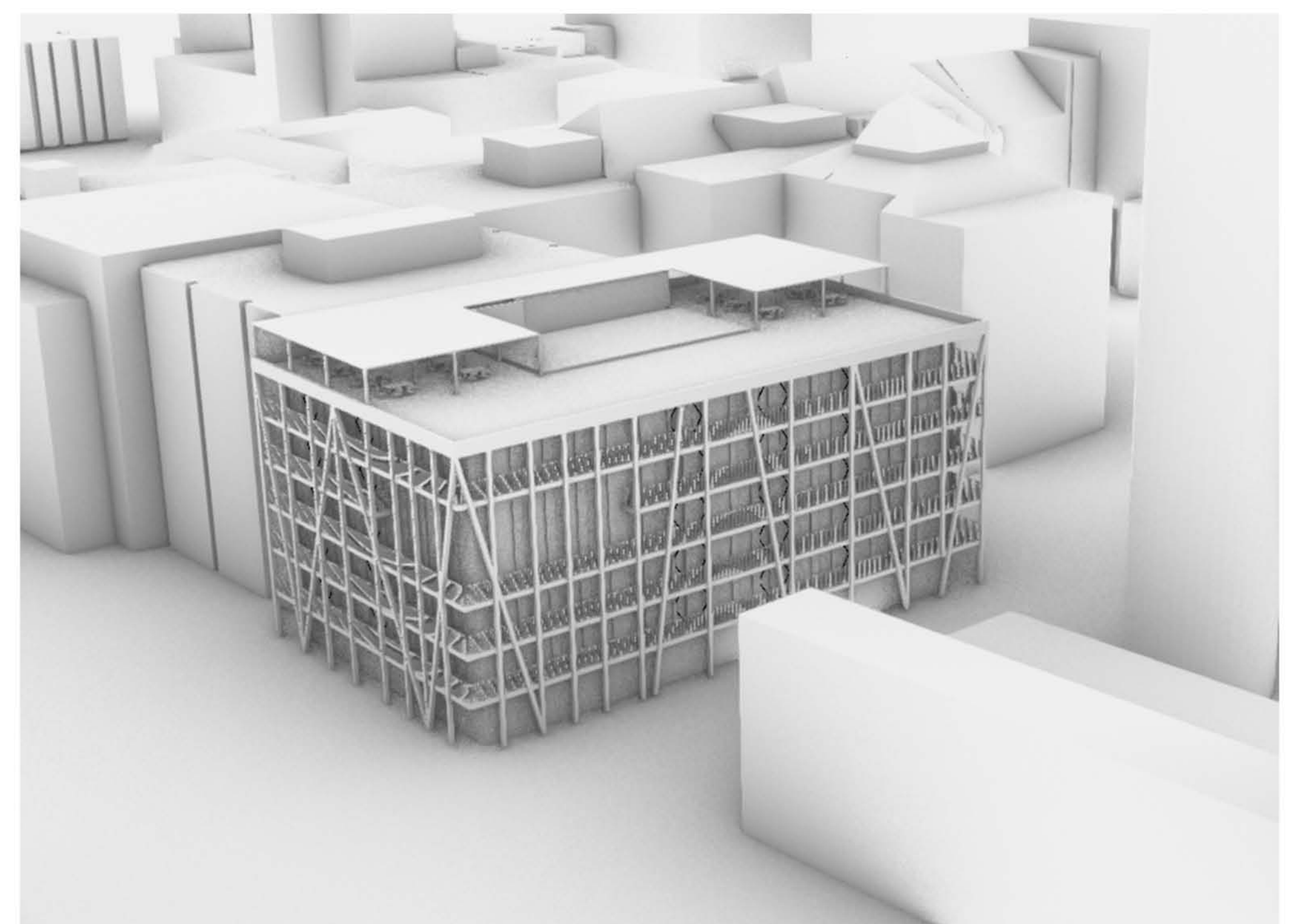
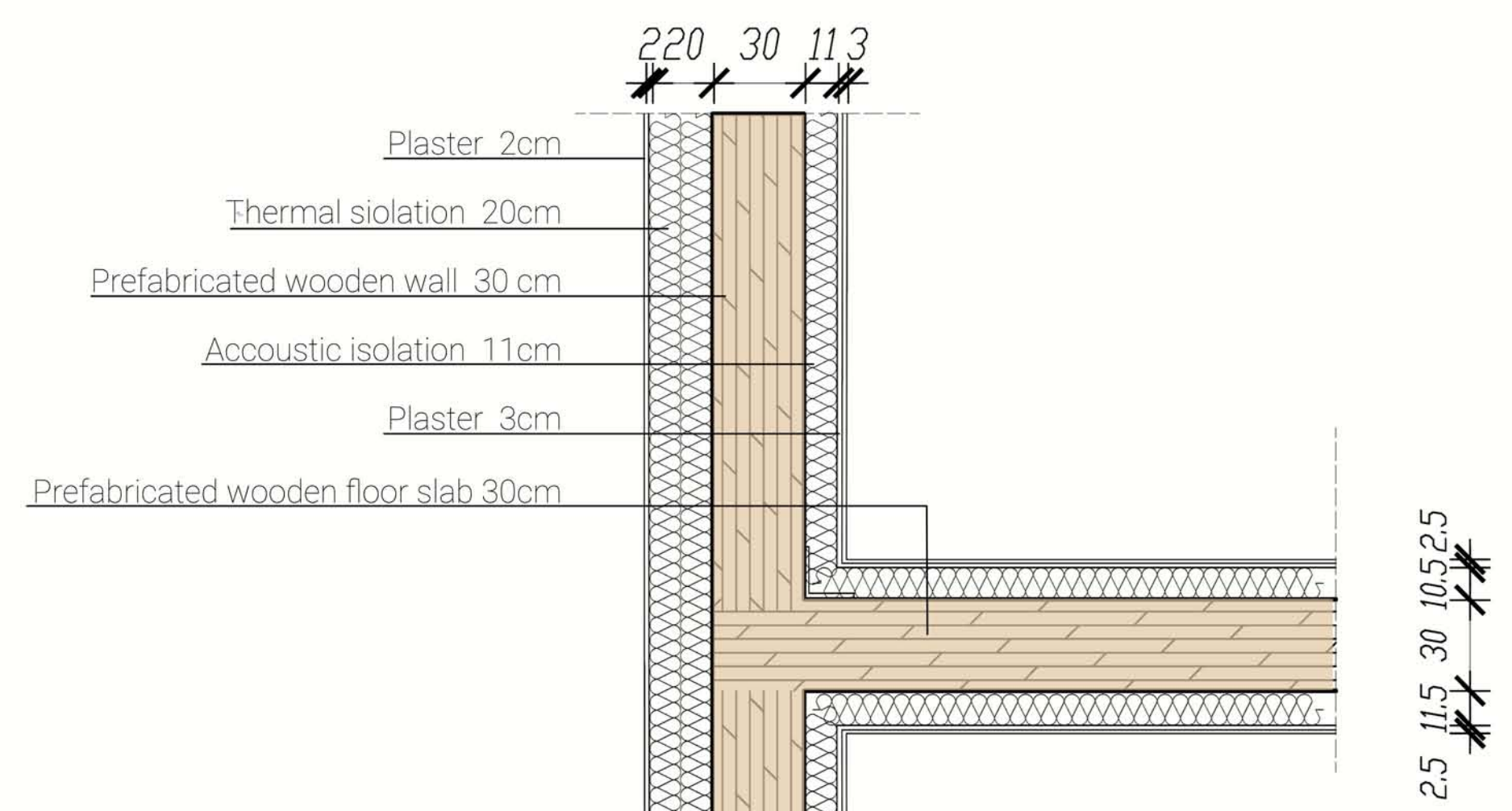
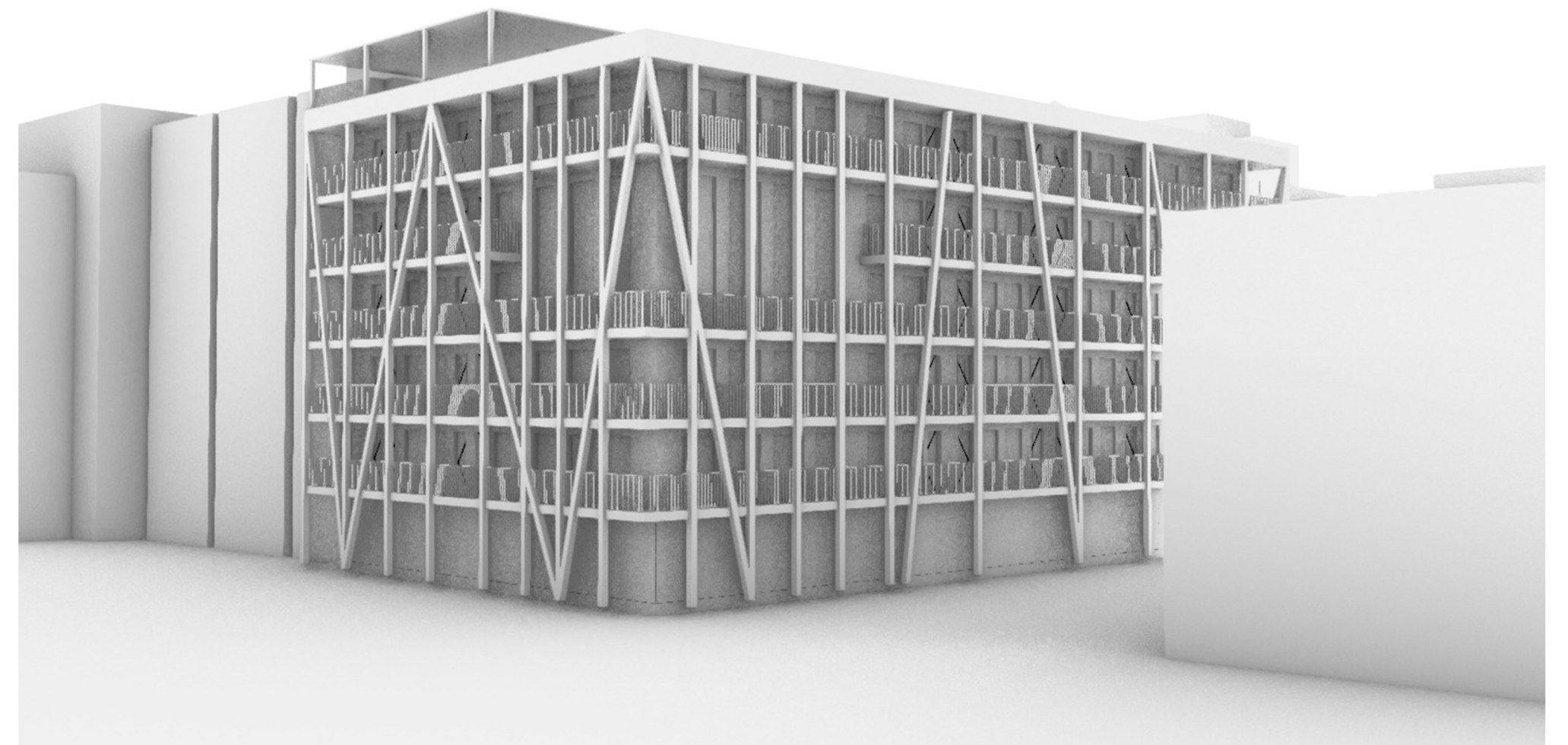


Groundfloor plan 1:200



First floor plan 1:200

The Fællesskab Co-housing



The Fællesskab Co-housing



Section A-A 1:200

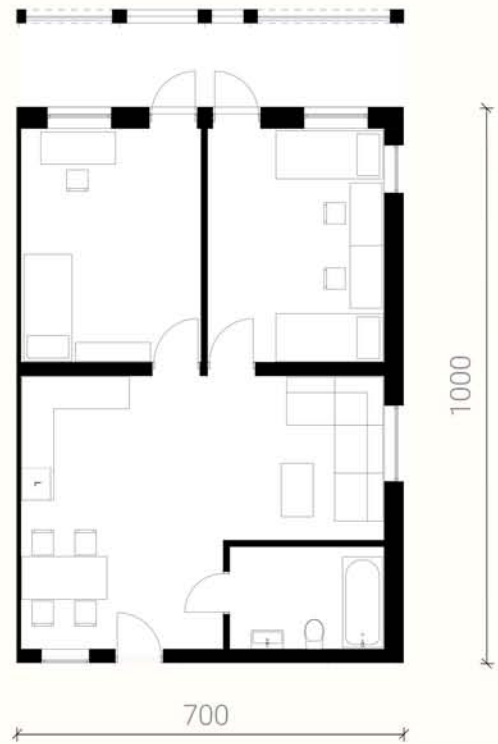
Section B-B 1:200



One of the characteristic points of the project are the high quality common spaces, located on every floor. They respond to the needs of the residents and create a place where residents can develop their passions, work, relax or actively participate in social life, everything without leaving home. Common rooms include shared kitchen and dining room, music hall, film room, garden office, and working office.

Moreover there are also small common spaces, located on the corners of courtyard corridors. These are designed to facilitate social meeting in cameral and comfortable atmosphere, close to door of the flat.

They also vary evolving on every floor. On the ground floor you can find Cafe, Fitness room and exhibition hall for local artists. On the top there is located a rooftop with a viewing deck with cafeteria and garden.



Typical housing unit 1:50



Eastern elevation 1:200

Southern elevation 1:200

Western elevation 1:200

The Faelesskab Co-Housing

The Main idea of the Faelesskab Co-Housing project is to create a shared space which will follow the needs of the student community in the close neighbourhood of the Bockenheim campus. During the development of the concept, an important role was to create the best-quality common space in the residential unit. The Cohousing includes 35 new housing units, based on 5 floors.

The plan of the building is based on the layer principle like an onion. The core of the building is created around the courtyard build in the centre. It's covered with the transparent glass roof so It lets the sunlight inside. The next layer are the walking corridors, through them you can get to semi private shared spaces which contain living room and kitchen. Then there is private space ring, where the bedrooms are located. The last layer is the balcony terrace ring which surrounds the whole building.

One of the characteristic points of the project are the high quality common spaces, located on every floor. They respond to the needs of residents and create a place where residents can develop their passions, work, relax or actively participate in social life, everything without leaving home. Common rooms include shared kitchen and dining room, music hall, film room, garden office, and working office.

Moreover there are also small common spaces, located on the corners of courtyard corridors. These are designed to facilitate social meeting in cameral and comfortable atmosphere, close to door of the flat. They also vary evolving on every floor. On the ground floor you can find Cafe, Fitness room and exhibition hall for local artists. On the top there is located a rooftop with a viewing deck with cafeteria and garden.

The exterior design was inspired by German traditional woodworking technique, shape of the columns follows Fachwerk, commonly used in Hessen.

Considering the dangers of global warming, the construction is designed from CLT wooden prefabricates, avoiding the use of the concrete.