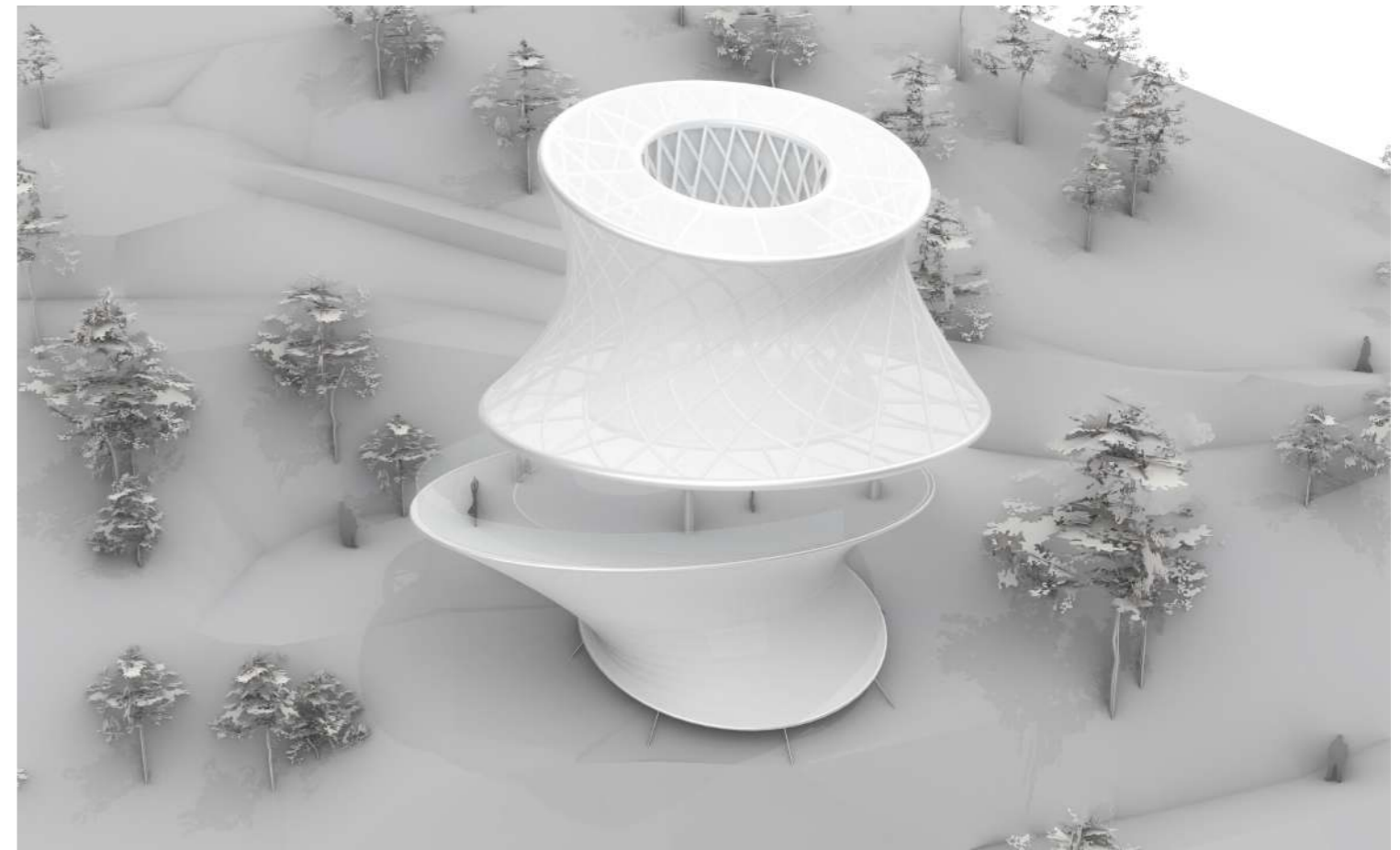
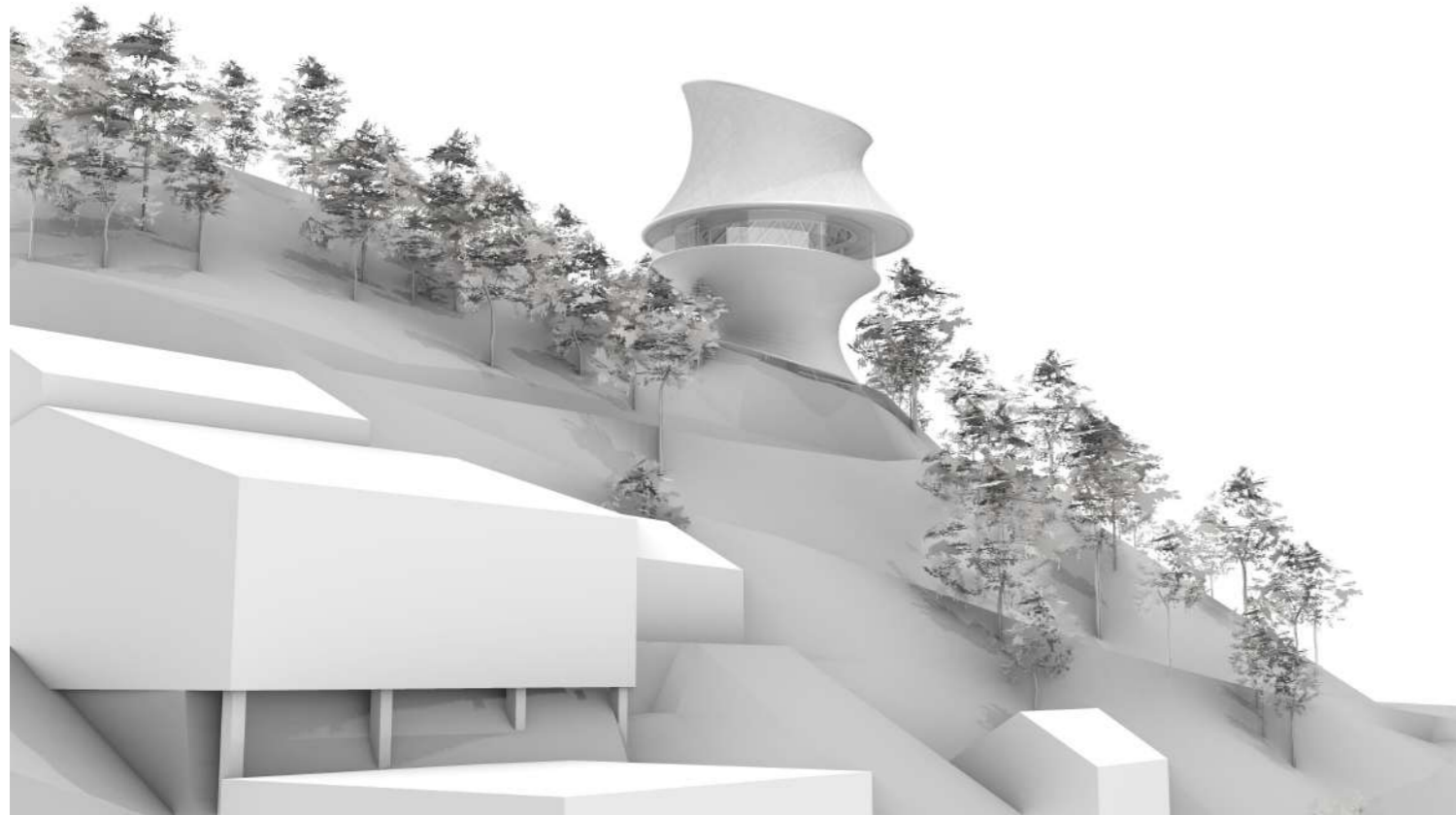
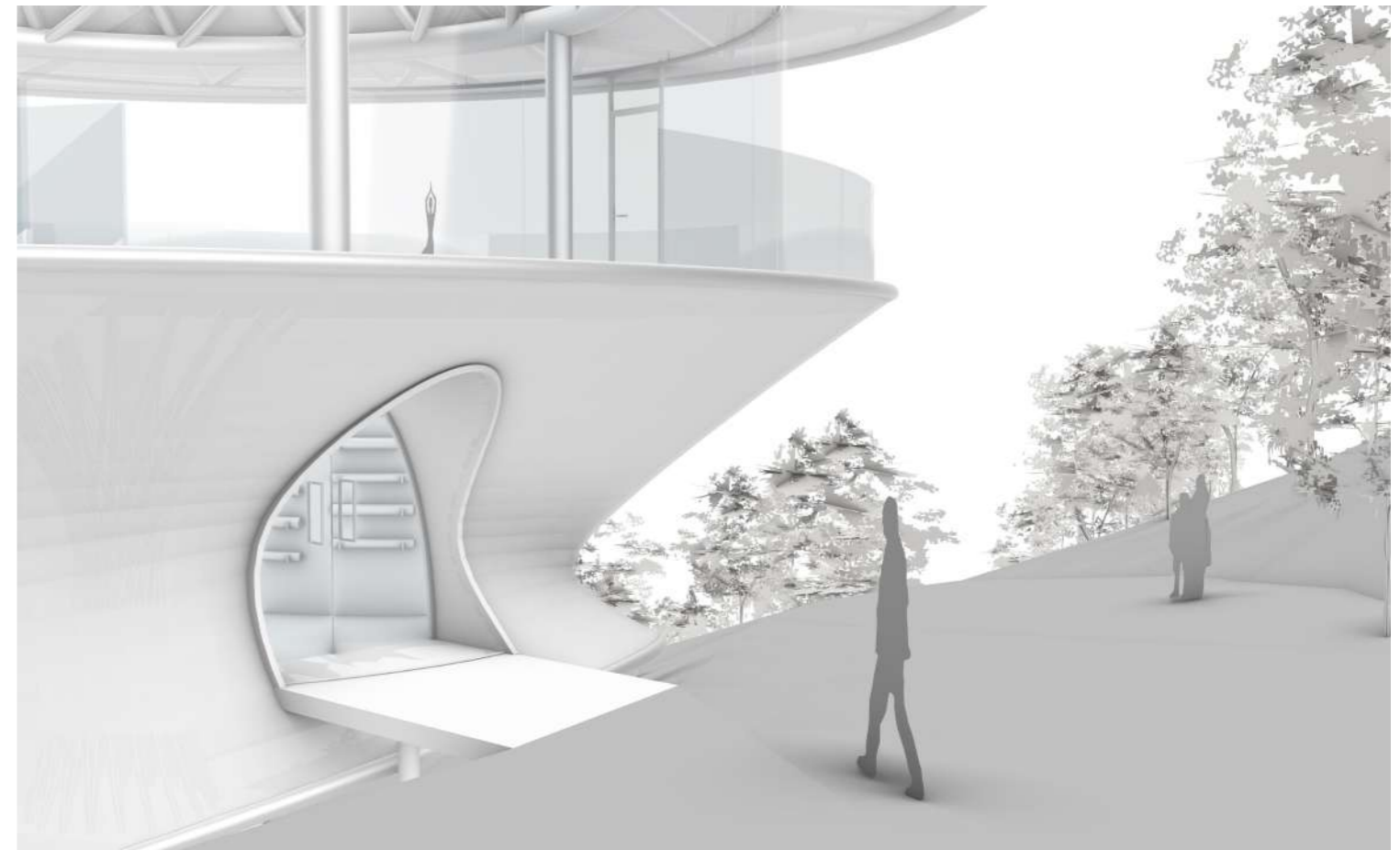
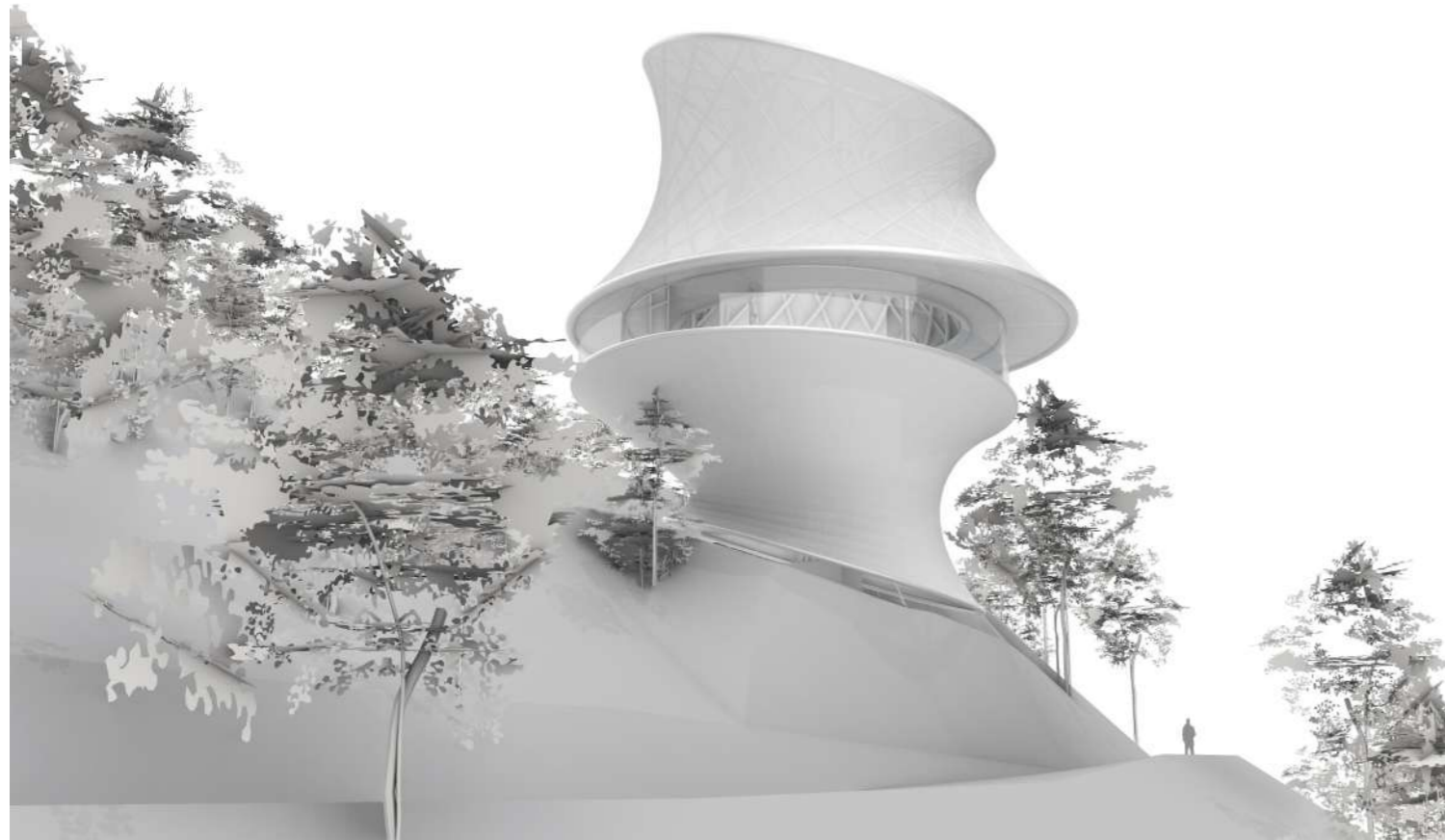


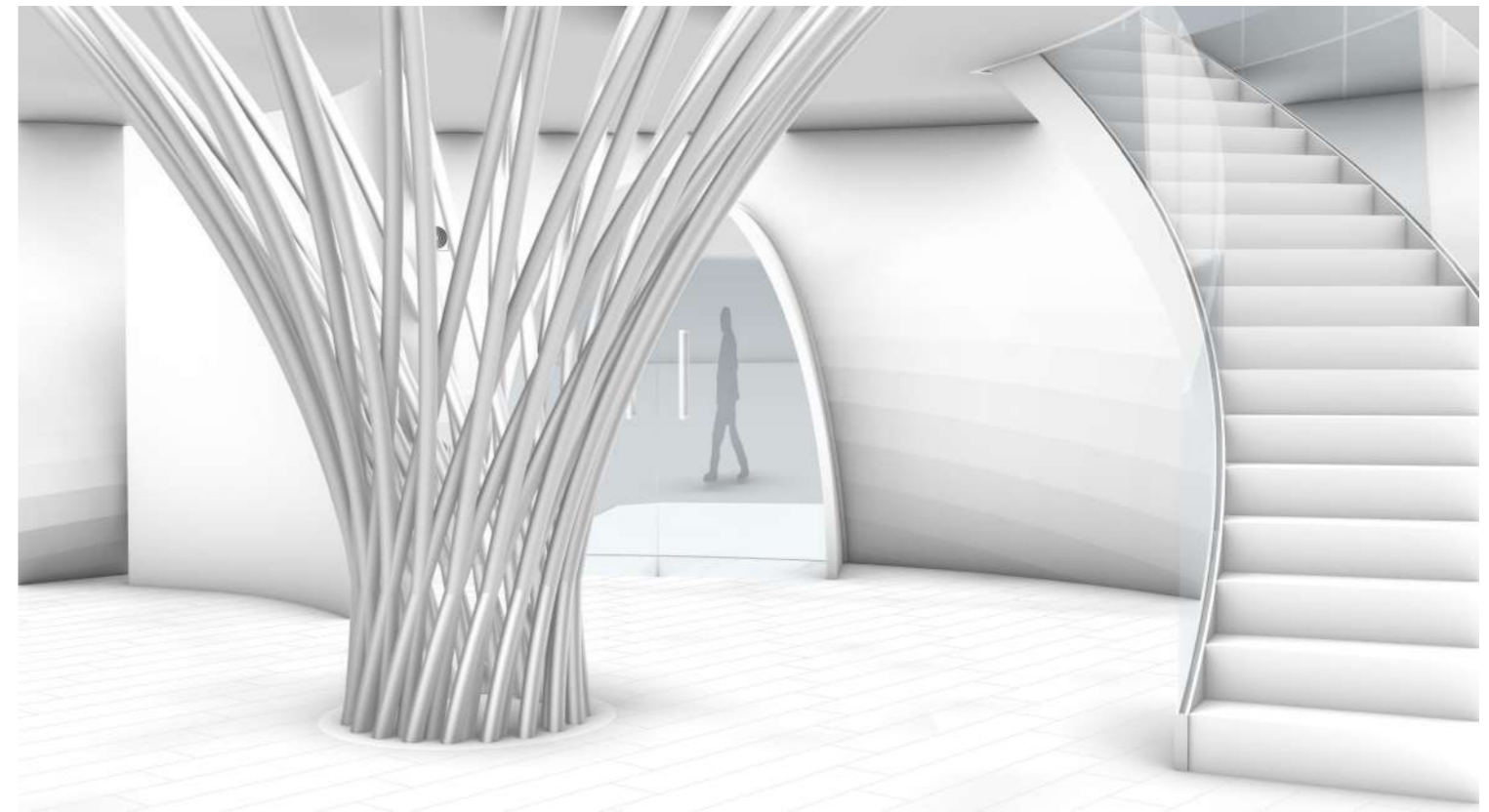
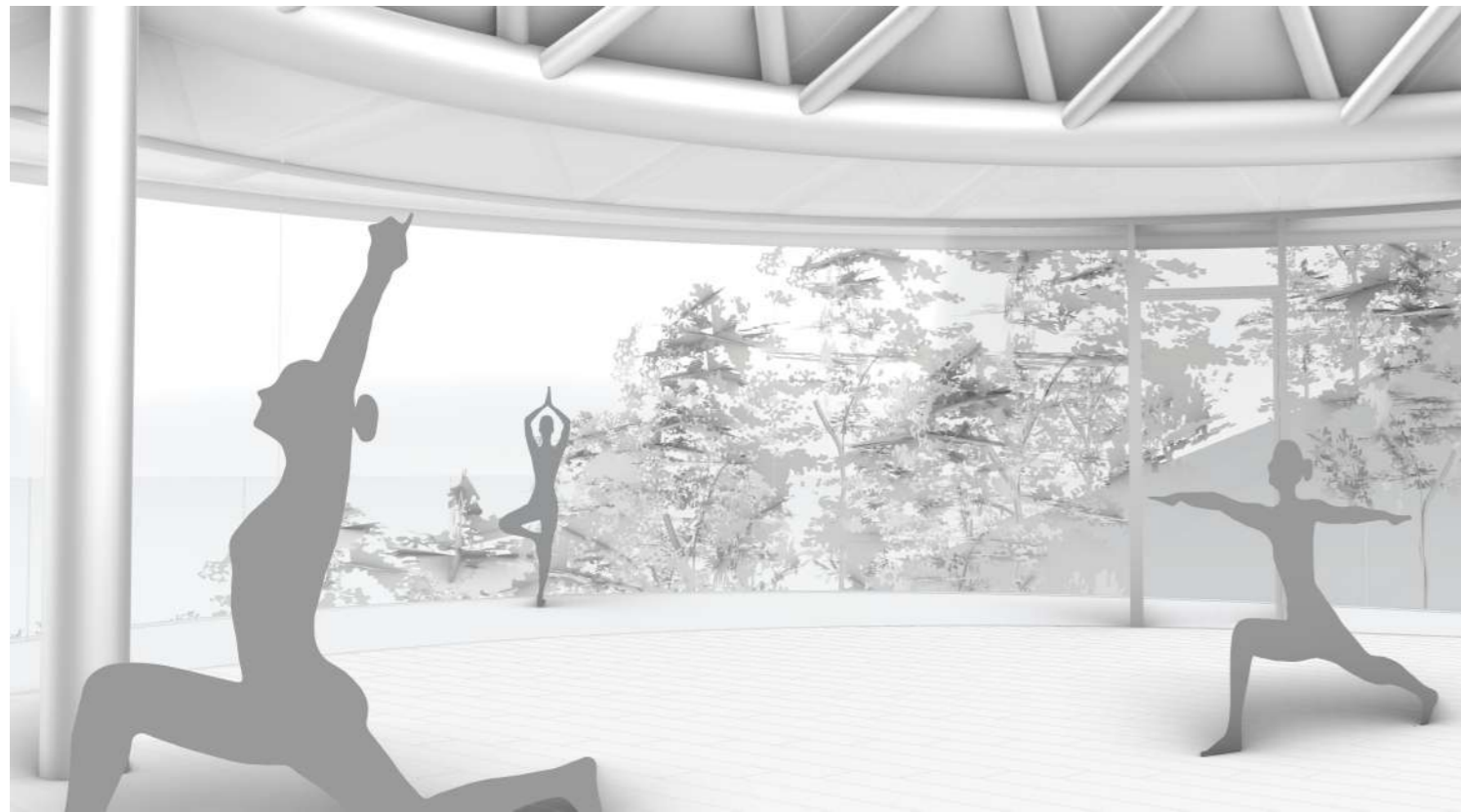
Dokumentation



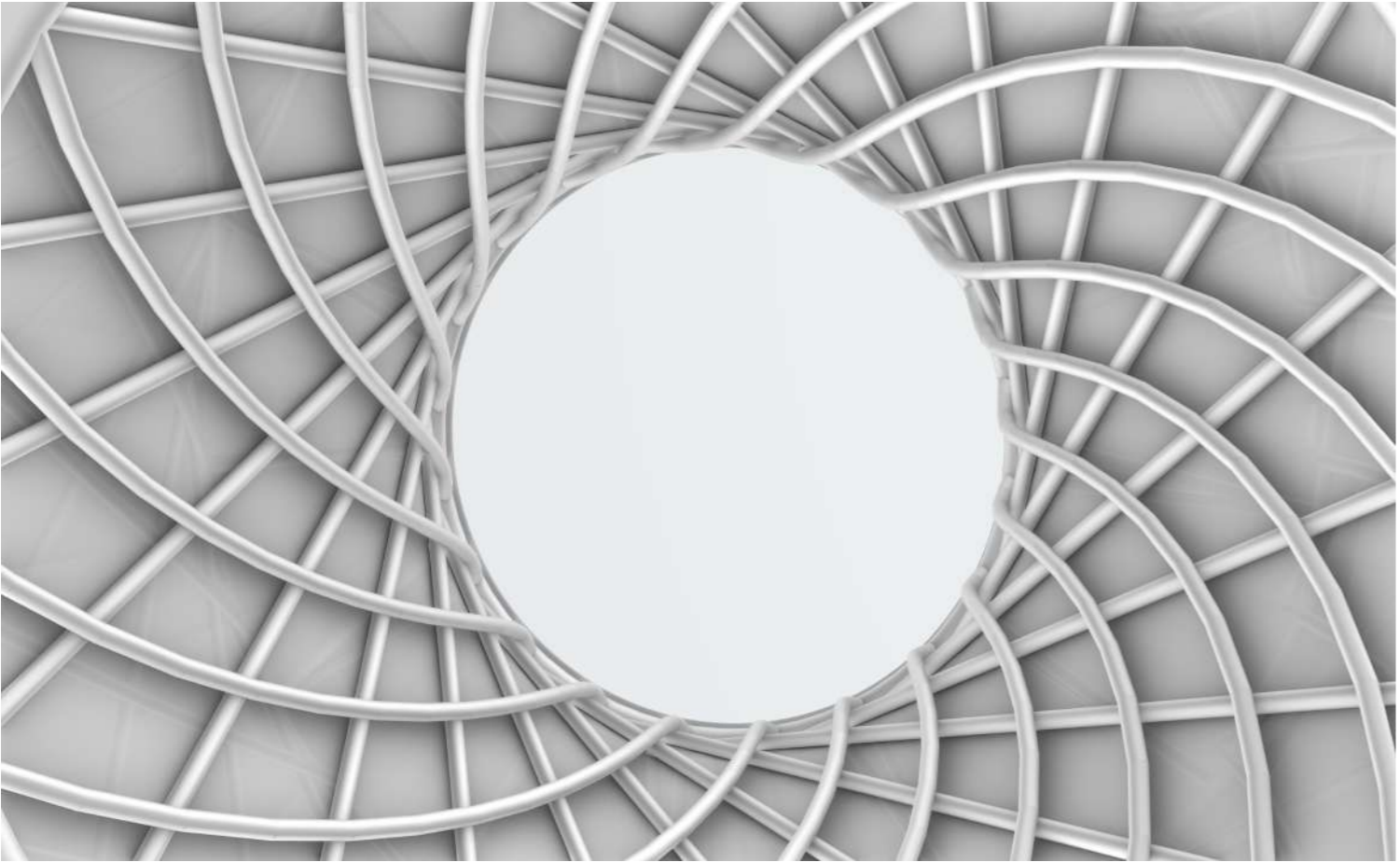
# Dokumentation



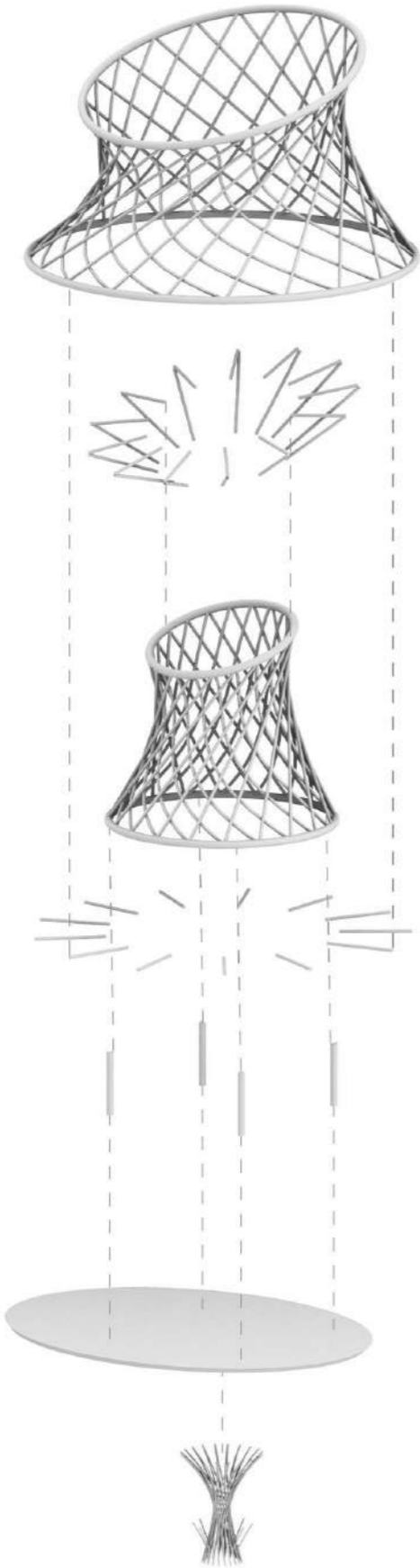
# Dokumentation Innenraum



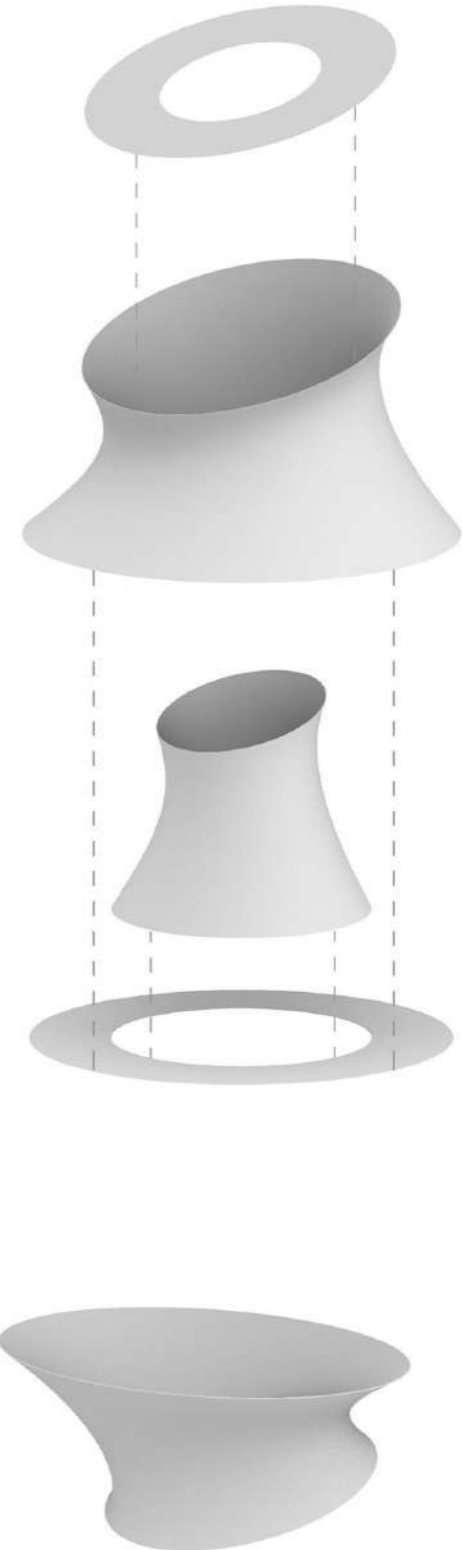
Dokumentation Konstruktion



Piktogramme



Konstruktion



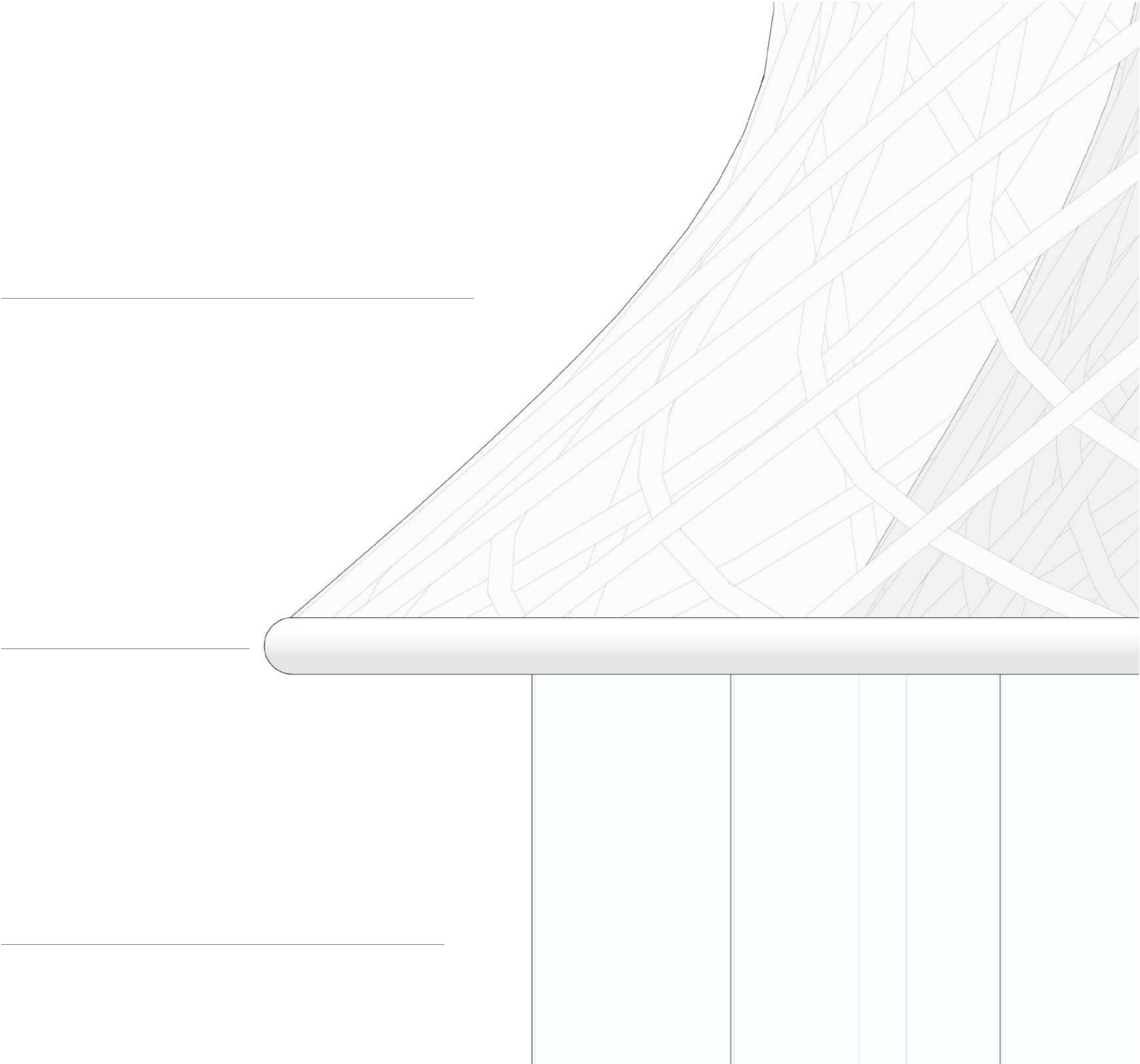
Membran

# Materialien

PTFE Gewebe "Tenara":  
innerer und äußerer Hyperboloid  
unterer Körper

weiße, 3-fach beschichtete  
Stahlkonstruktion "Promapaint 30/60":  
hyperboloide Konstruktionen  
Stützen

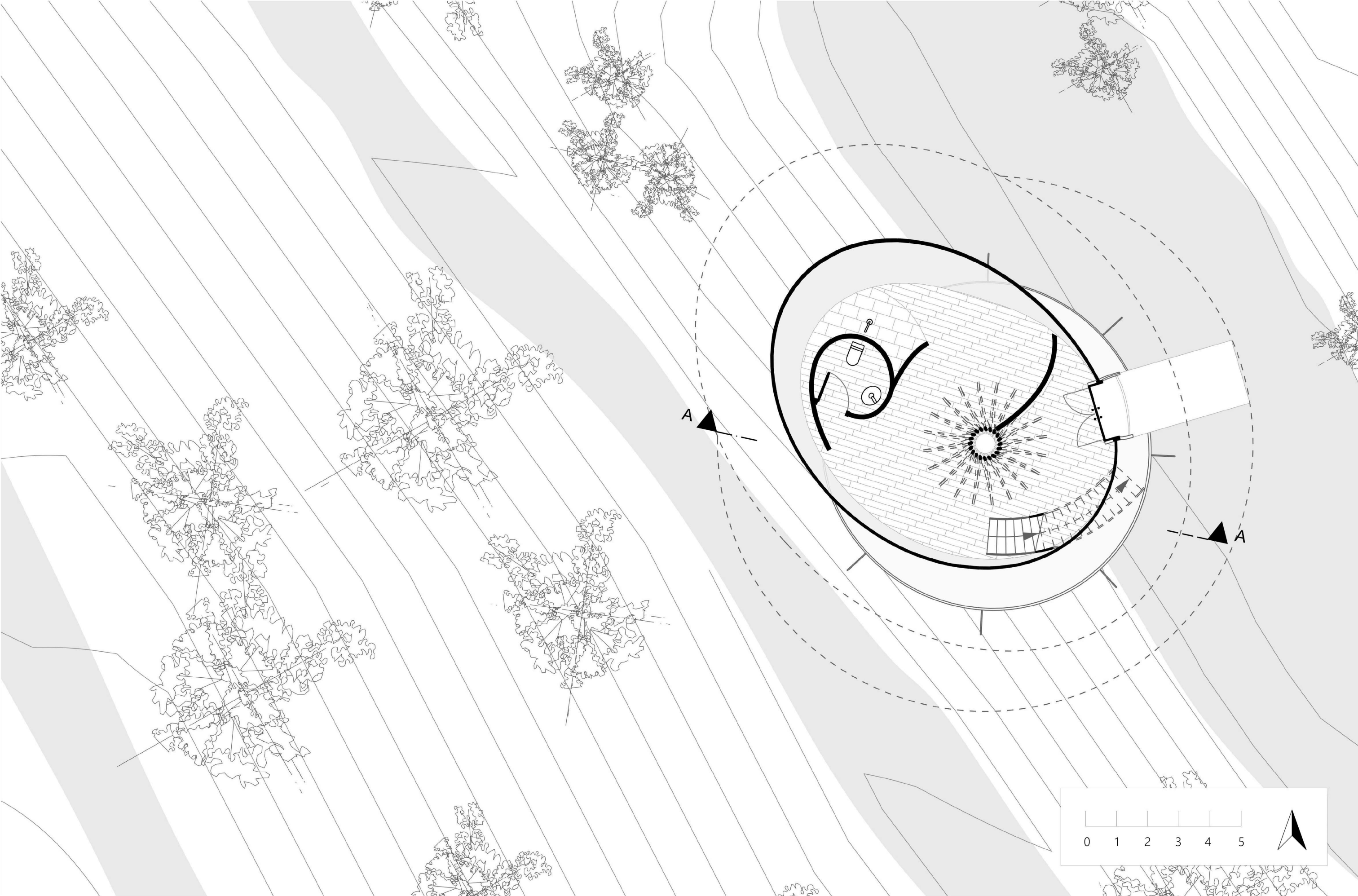
2-fach Verglasung:  
elliptische Glasfassade



Lageplan

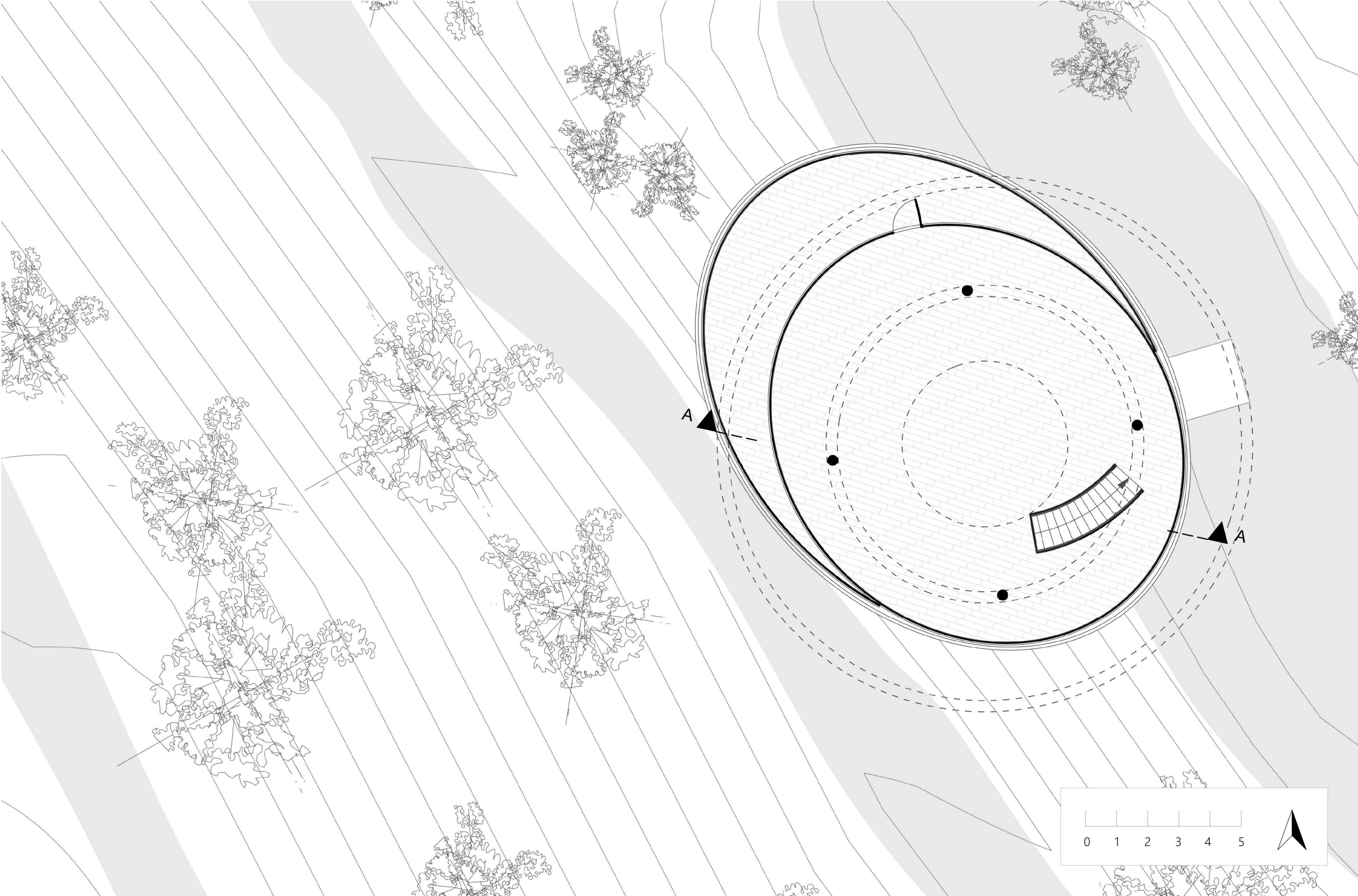


Grundriss EG

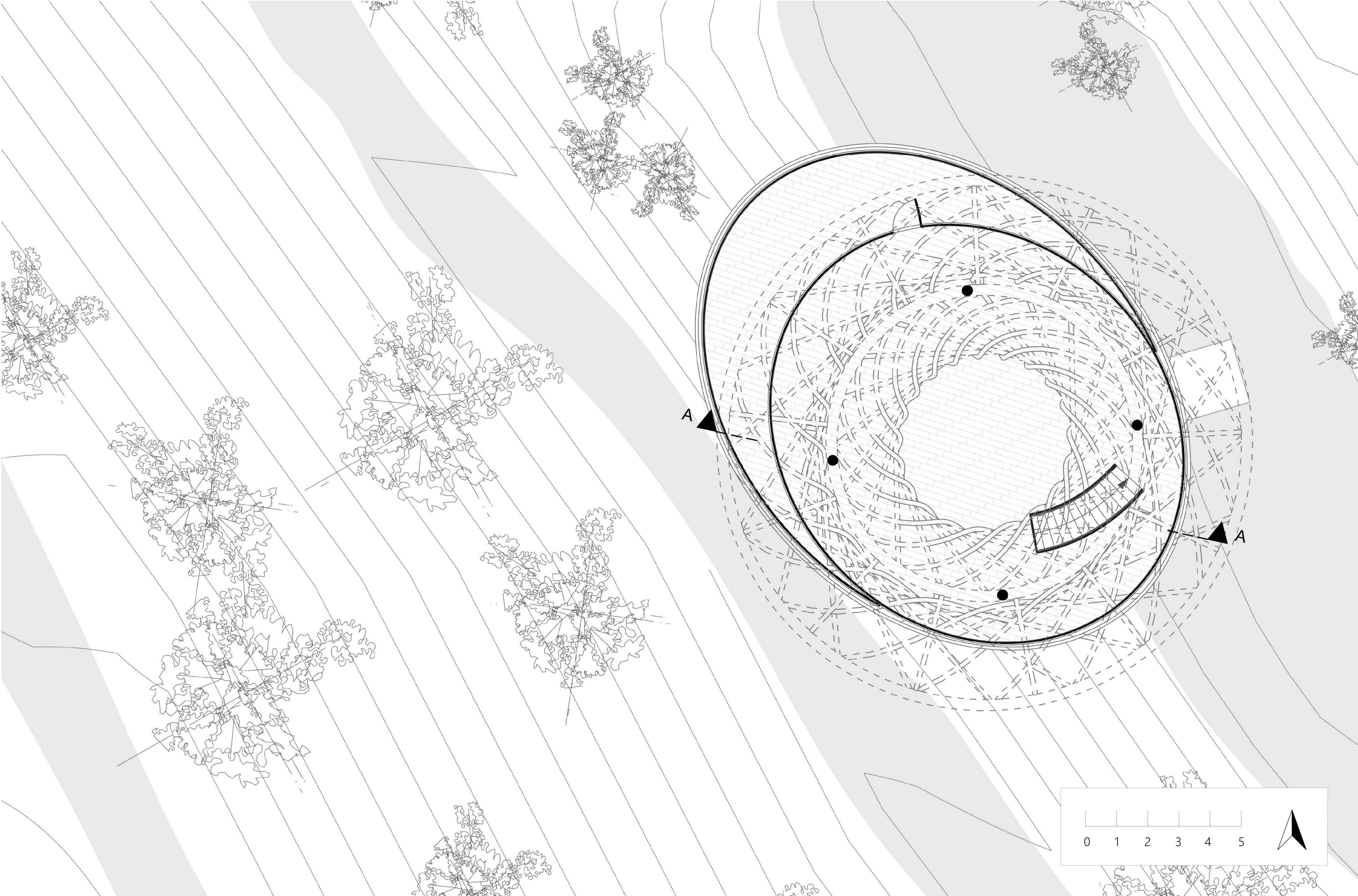




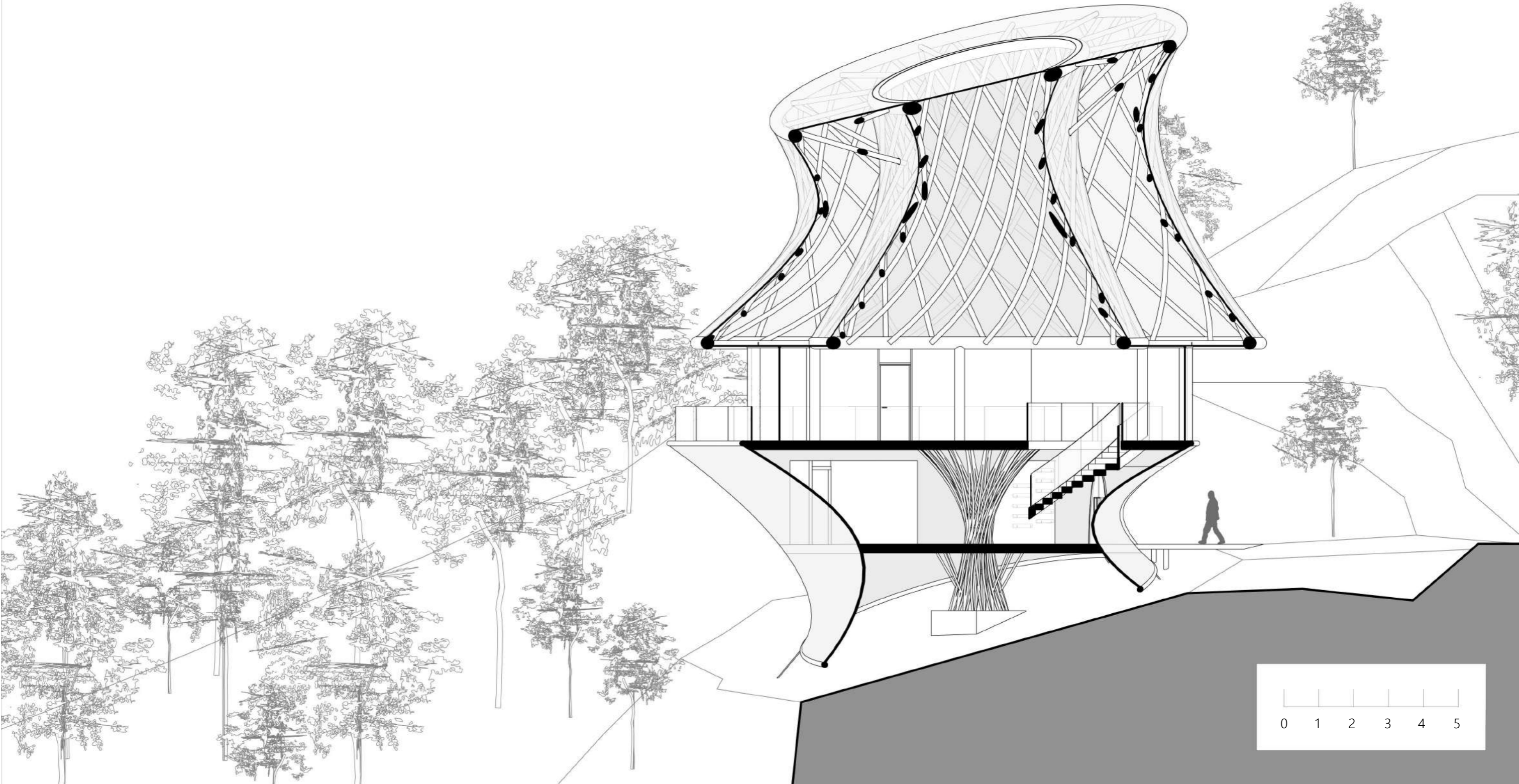
Grundriss OG (vereinfacht)



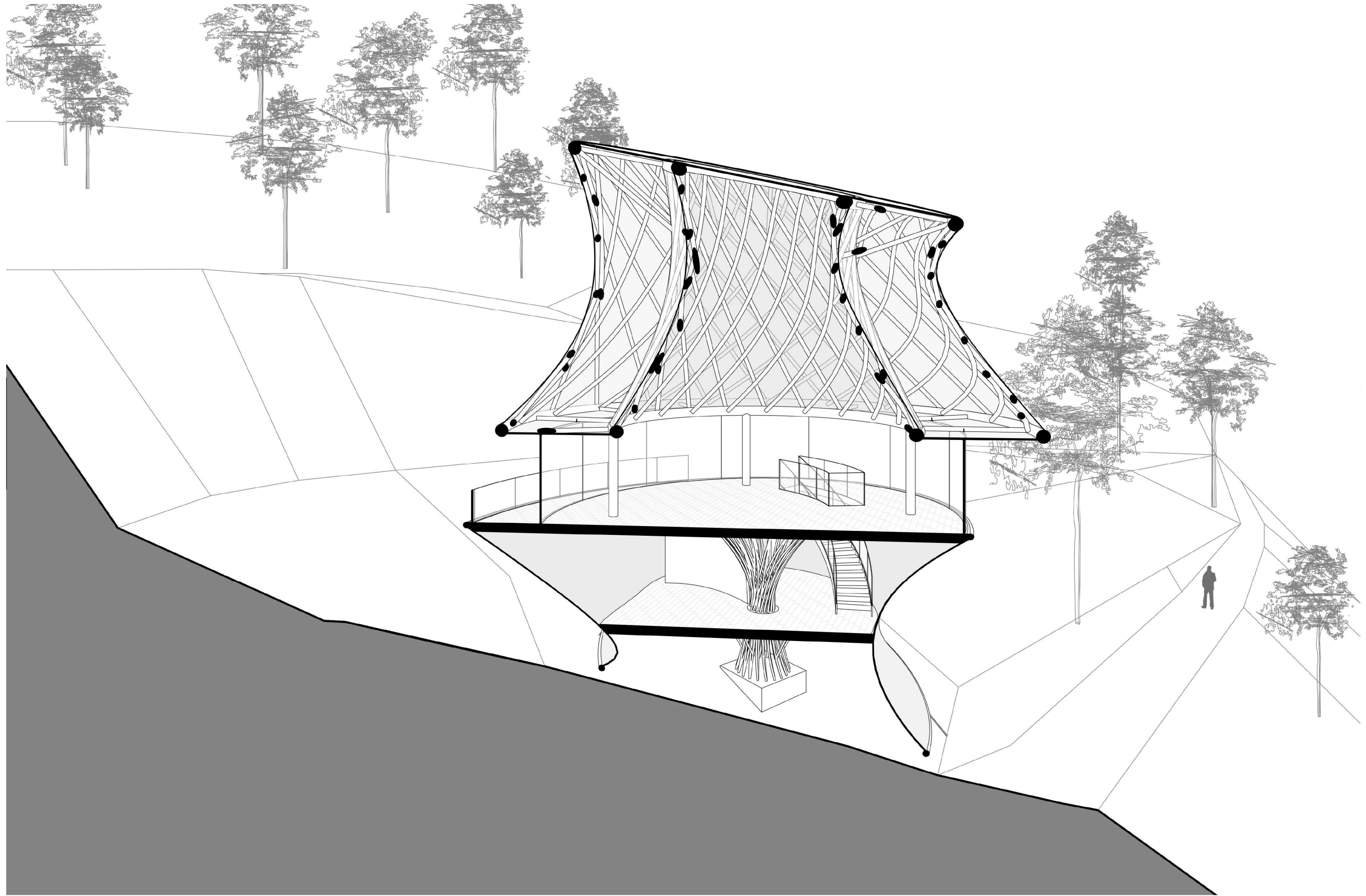
Grundriss OG (Konstruktion)



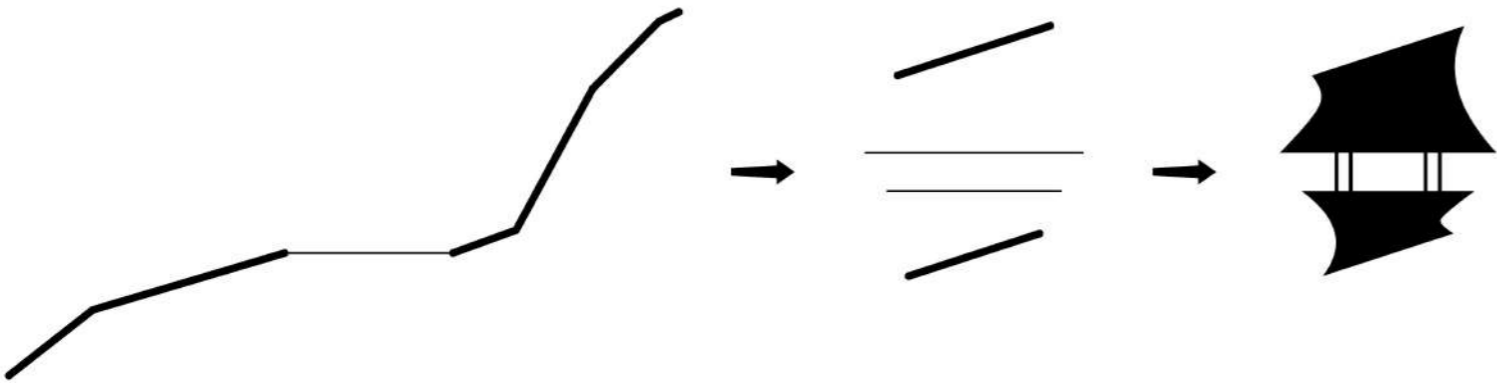
Schnitt A-A



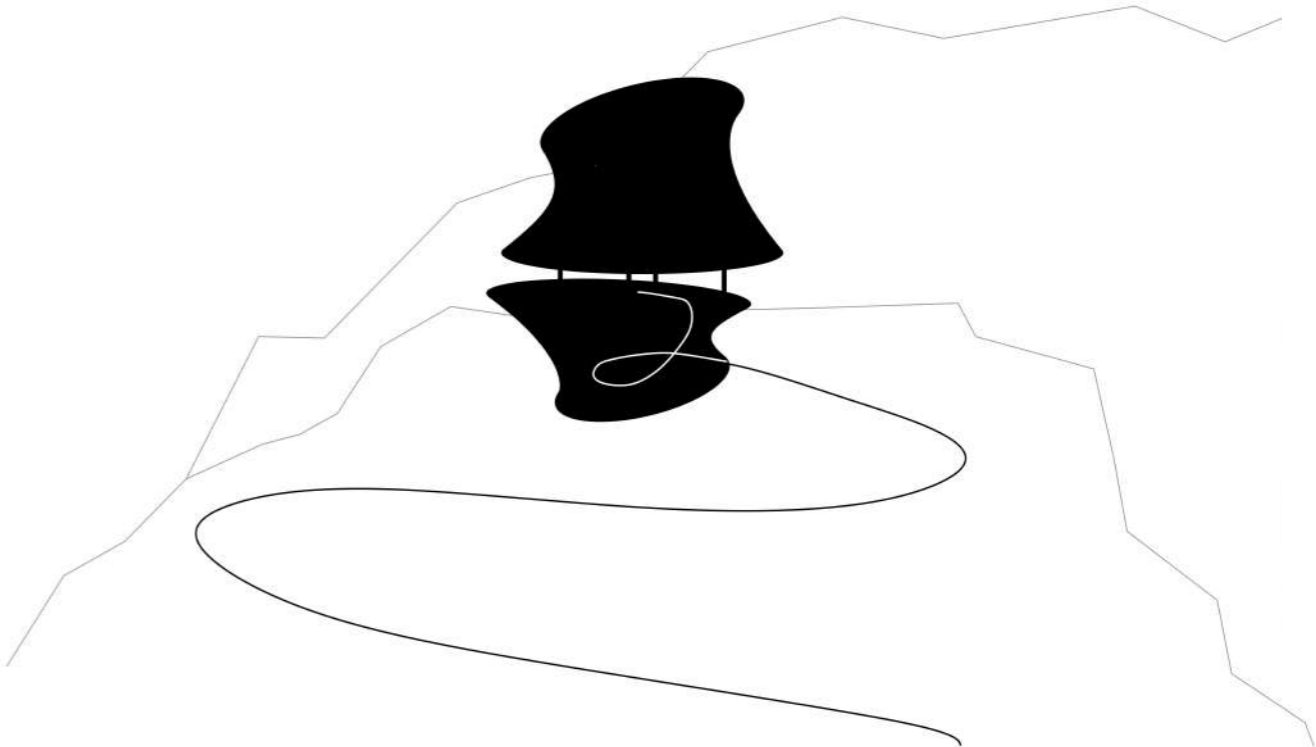
Schnittperspektive



Piktogramm



Ebenen Herleitung



Wegführung