

OTAKU HOUSE



Frankfurt

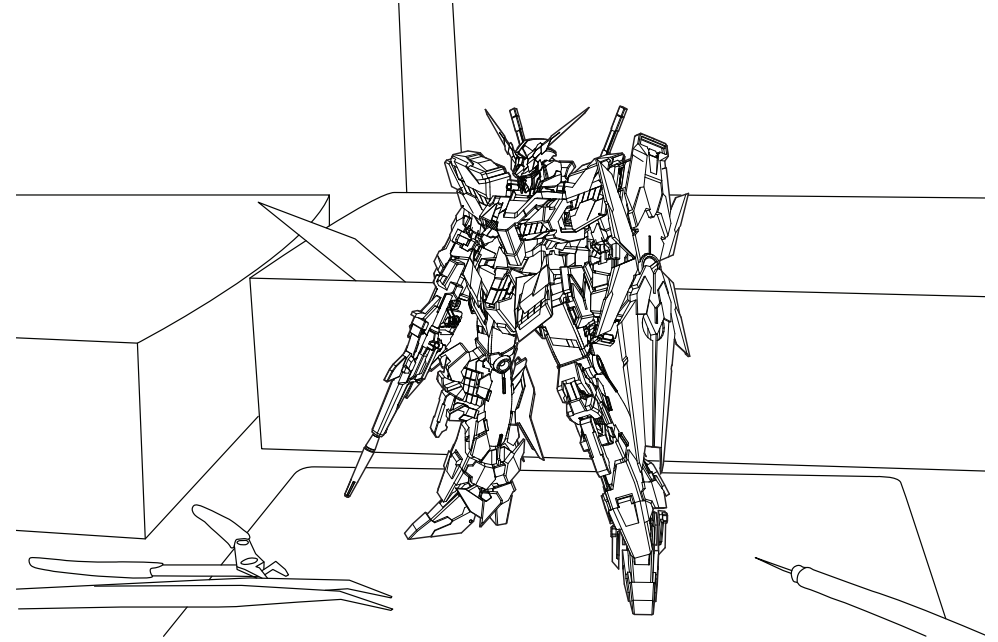
TABLE OF CONTENTS

BACKGROUND	
Otaku's Story	5
What is Otaku	6
What is Gundam	8
Process	10
Tools	12
Stations	16
CONTEXT	
Users & Needs	22
Location	24
Site Plan	26
ARCHITECTURE	
Simple. Playfull	30
Plans	34
Special Needs	42
Sections	50
Structural Members	56
Elevation	58
Details	64
Model	70

I

BACKGROUND

OTAKU'S STORY



An Otaku has a tendency to be associated as a bad part of society in Japan. However, the passion and efforts in what they are doing is undeniable. Nowadays, an Otaku can live from their hobbies because people start to understand them.

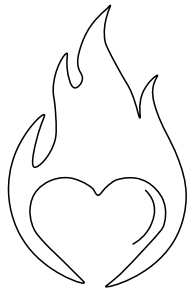
Here comes Akihiro. An Otaku. He is a custom toy maker. Mix of Frankfurter and Japanese. Living purely from custom toys is tough for him unless your work is world phenomenal. This realization makes the Otaku wants to have another source of income. He wants to make a simple line production for toys that made from resin

At the same time, he wants people to see his work. The idea of having a space for him to do his work and having another space that makes people interact with his field of work makes him excited. Moreover, as a toy maker, life is full of pressure as it moves from one deadline to another. Seeing people appreciate his work (and others' work) will balance this pressure

The Otaku's family members also want to live in the same building. His wife works as the attendant of the shop. She loves interacting and cleaning the house. As for his children, they are old enough to explore the surrounding.

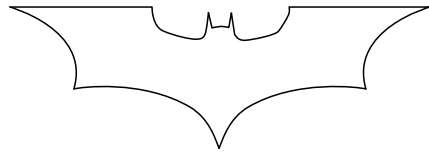
As for the public, they can come directly to the shop. Furthermore, they can explore around the space. Last but not least, the visitor can also peek at the daily life of otaku. So, they can appreciate more the work and life of an artist.

WHAT IS OTAKU



Obsessed

Otaku means obsessed in Japanese word. Either young or old, anybody can be an Otaku.



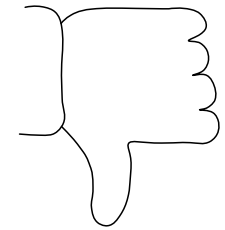
Fiction

This obsession commonly falls on anime and manga. Both are part of Japanese pop culture



Shunned

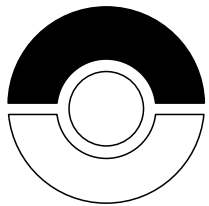
Having a bad social life is usually one of the effect of this obsession



Negative

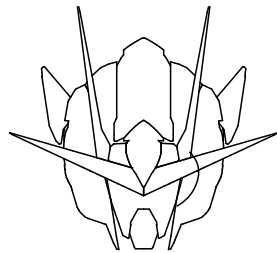
Most of the time Otakus are seen negatively and seen as someone who does not have a future.

WHAT IS GUNDAM



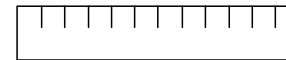
Anime

Anime is a shorter name for animation in Japan. Gundam itself is part of Anime characters. It is a robot that has similar appearance with a human.



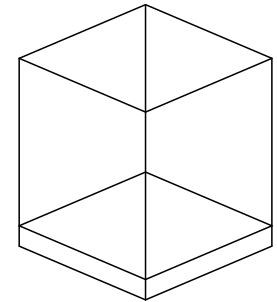
Toys

In real life, this robot has been realized as a toy that can be assembled by yourself. It comes with instructions, how to do it step by step.



Sizes

In the original anime, the height of a Gundam is around 23 meters. For the toys, they come with the scale of 1/144, 1/100, and 1/60. Ranging from 17 cm to 35 cm. Except costum made one.

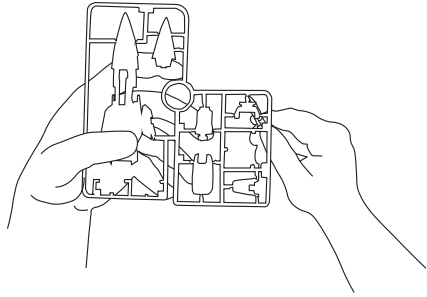


Showcase

It can be put on top of your desk or shelves. Also it can use specific frame to make it looks moving. Even you can hanged it from the ceiling.

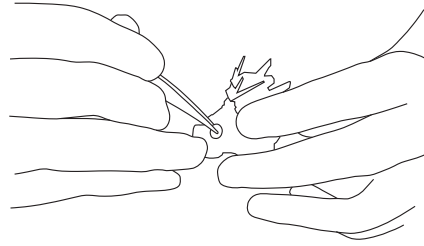
PROCESS

COSTUM GUNDAM



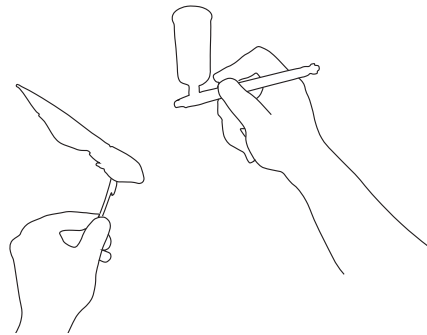
1 Cutting Out

Cut parts from runners and clean the nib with a side cutter.



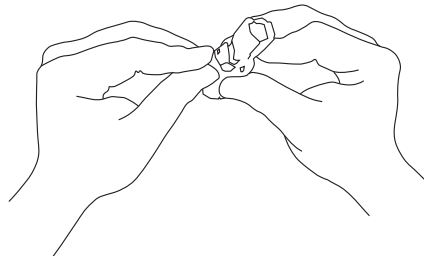
2 Detailing

Adding new lines and modify parts to make it look more sophisticated.



3 Painting

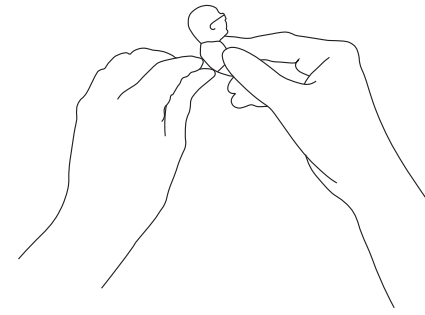
Change colors and add weathering effects. Can use air brush for overall painting and traditional brush for details.



4 Assembly

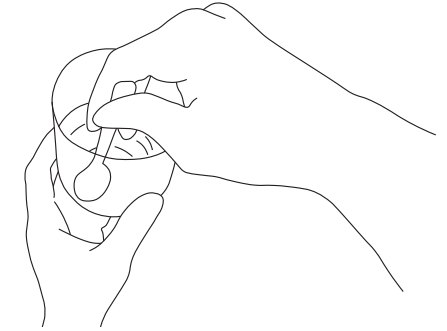
Build the model by joining all parts by following detail instructions.

RESIN BASED TOYS



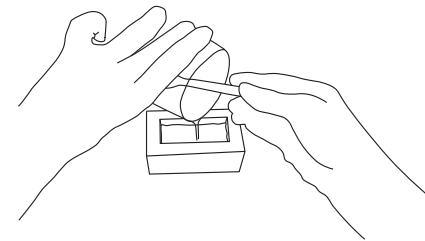
1 Modelling

Make a sample model using clay



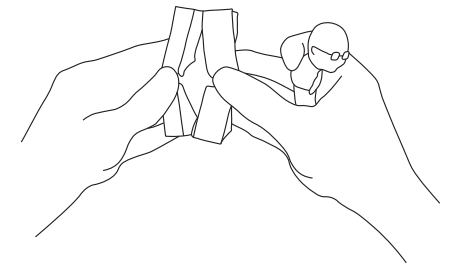
2 Mixing

Mix substances to get desired silicone and resin.



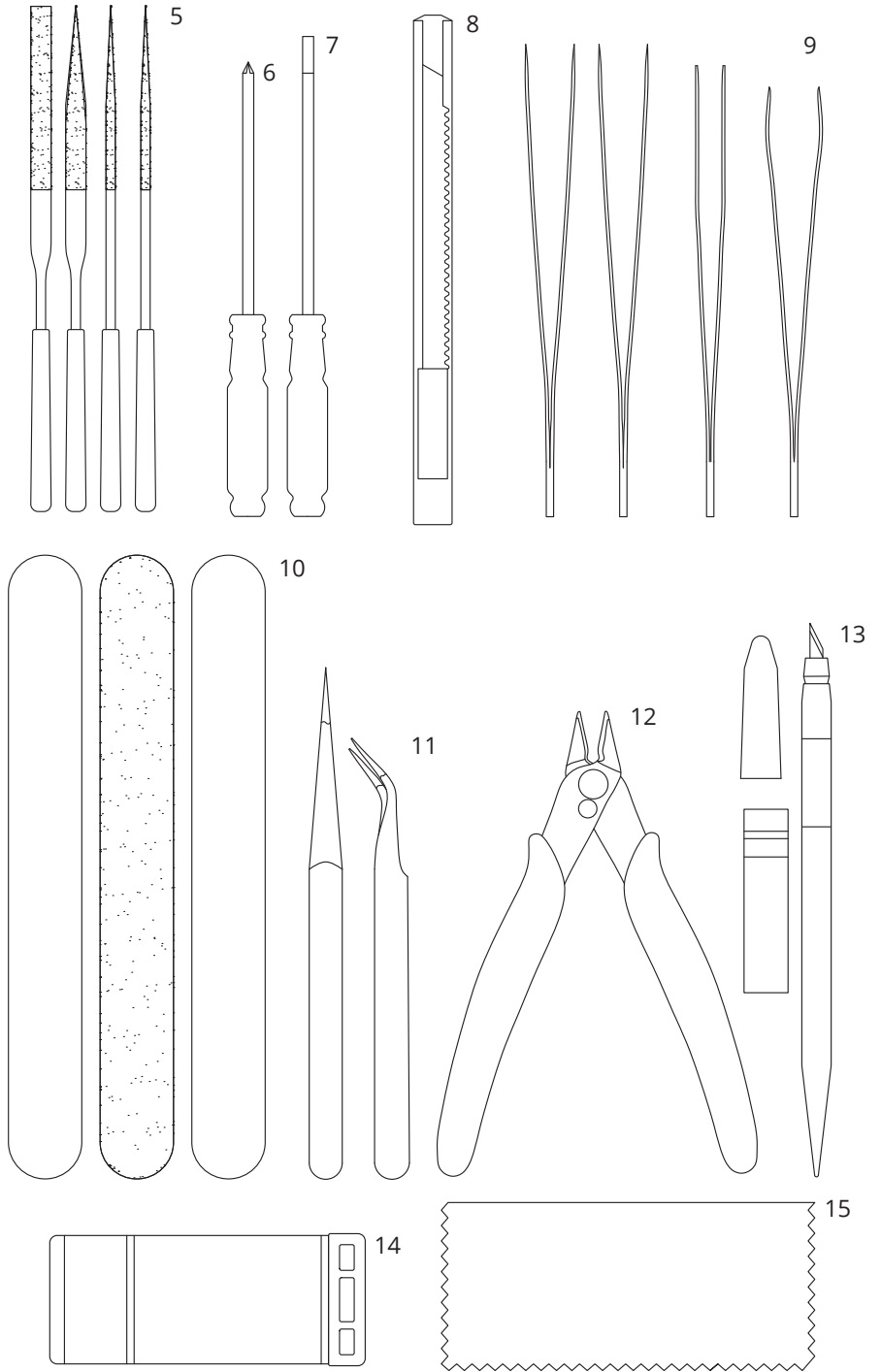
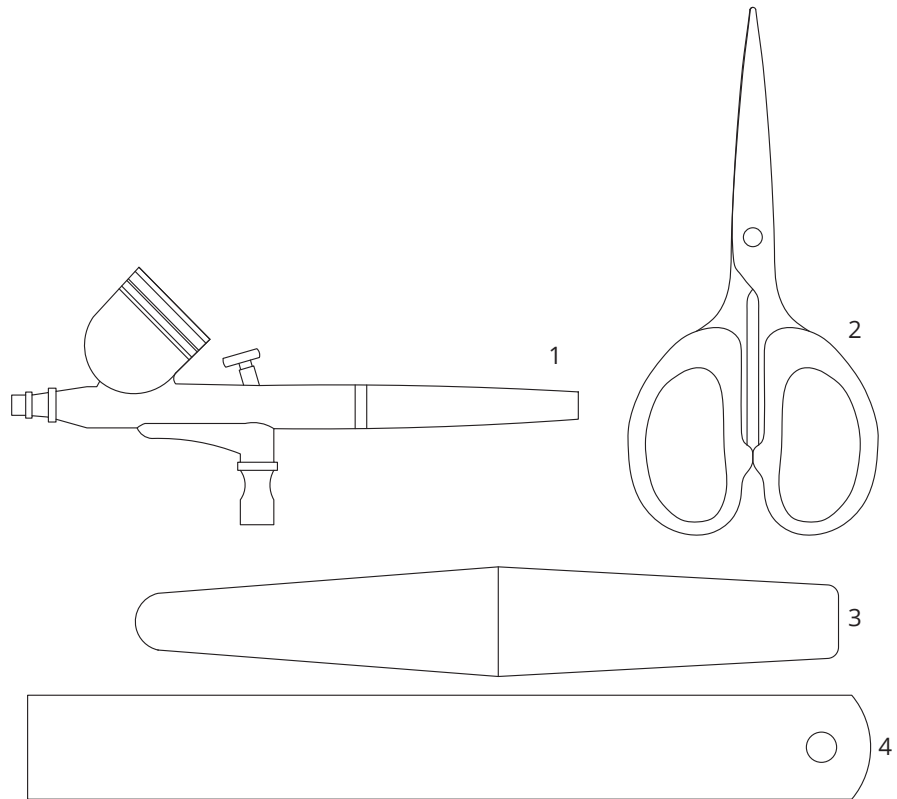
3 Molding

Put the model inside a closed box and pour the silicone.



4 Making

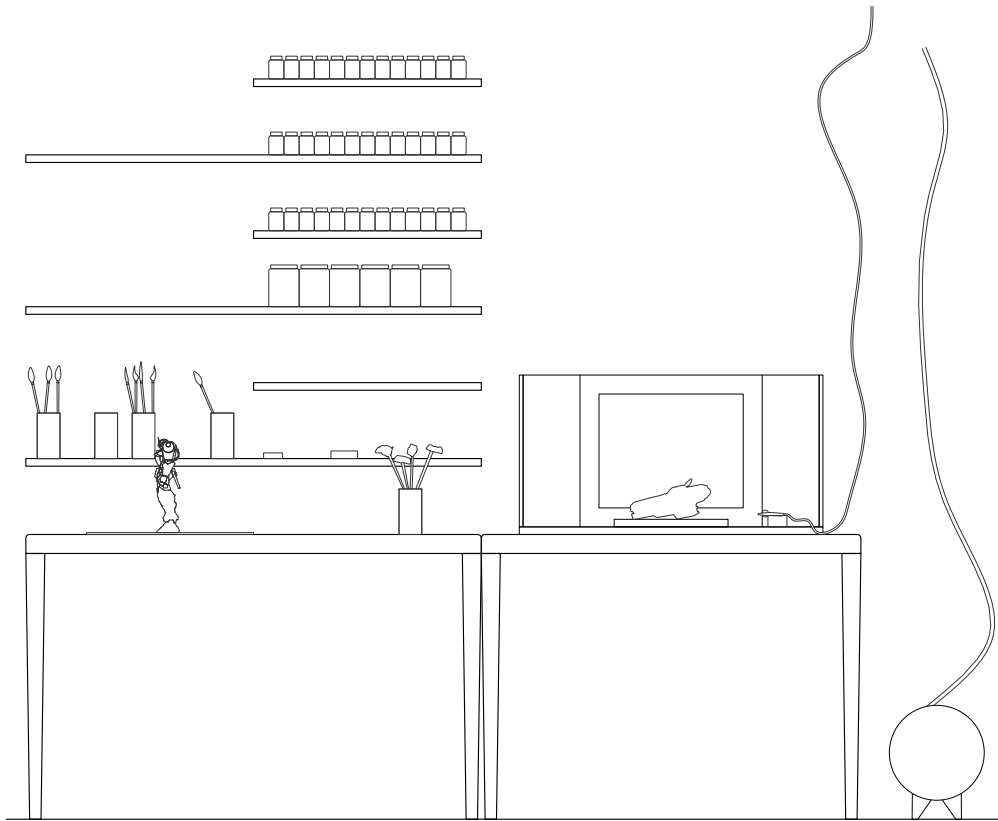
Cut the mold and take out the original model. Pour resin into mold. Wait. Simple toy is done.



- 1 Air Brush
- 2 Scissors
- 3 Rubber
- 4 Ruler
- 5 Steel Sanding Stick
- 6 Screw Driver
- 7 Flat Screw Driver
- 8 45° Cutter
- 9 Painting Pinset
- 10 Costum Paper Sanding Stick
- 11 Assembly Pinset
- 12 Sprue Cutter
- 13 30° Cutter
- 14 Plastic Base
- 15 Soft Fabric

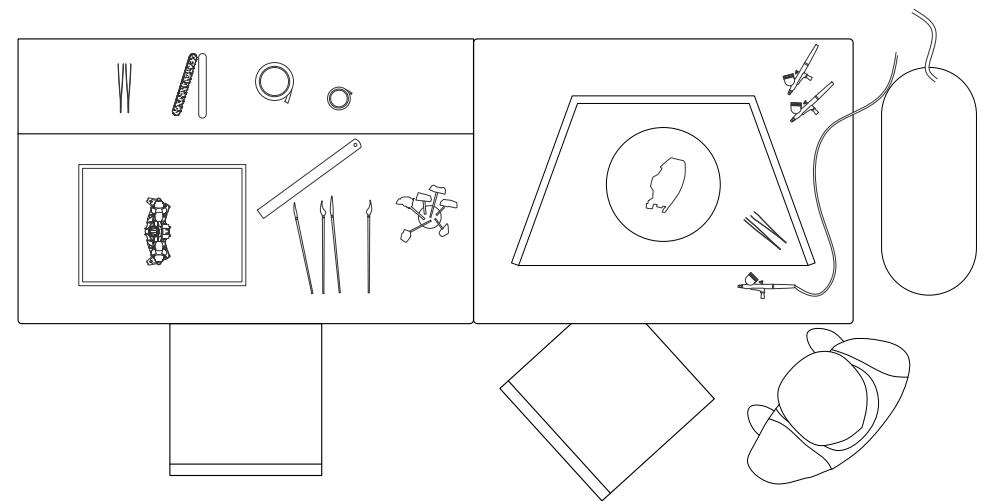
STATIONS

WEATHERING CORNER



2200

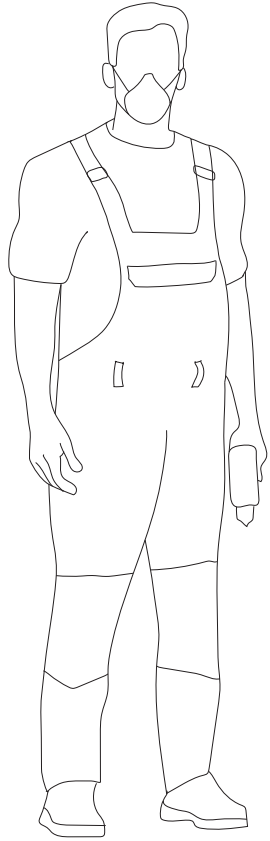
Elevation



Plan

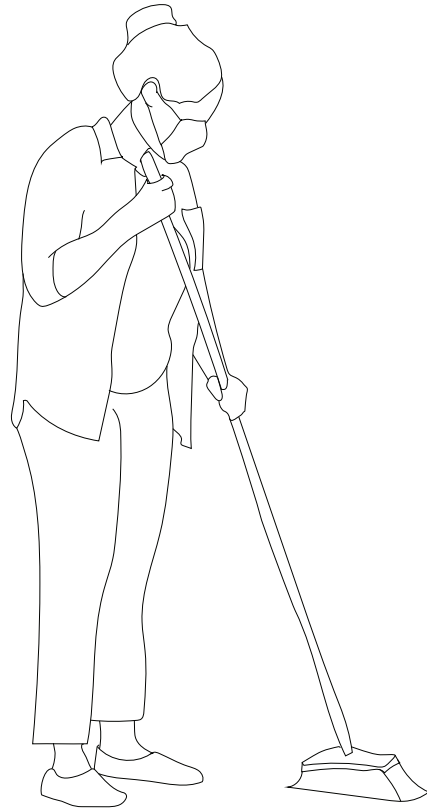
II
CONTEXT

USERS & NEEDS



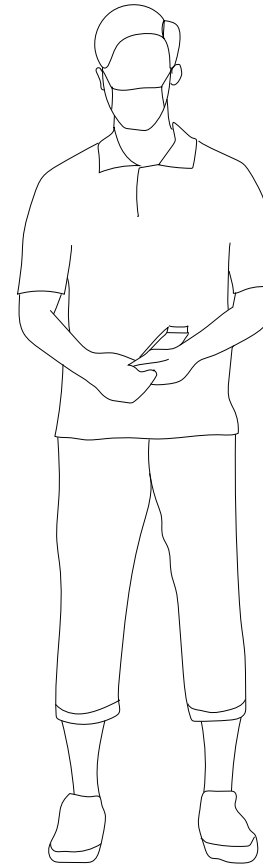
THE OTAKU

- main artist
- initial stage of toy making
- mainly at the workshop and the house
- needs workshop and reading room



THE WIFE

- shop attendant
- costumer service and house wife
- mainly at the shop and house
- needs garden and worshipping room



THE ASSISTANT

- artist's assistant
- finishing stage of the toy works
- mainly at the workshop

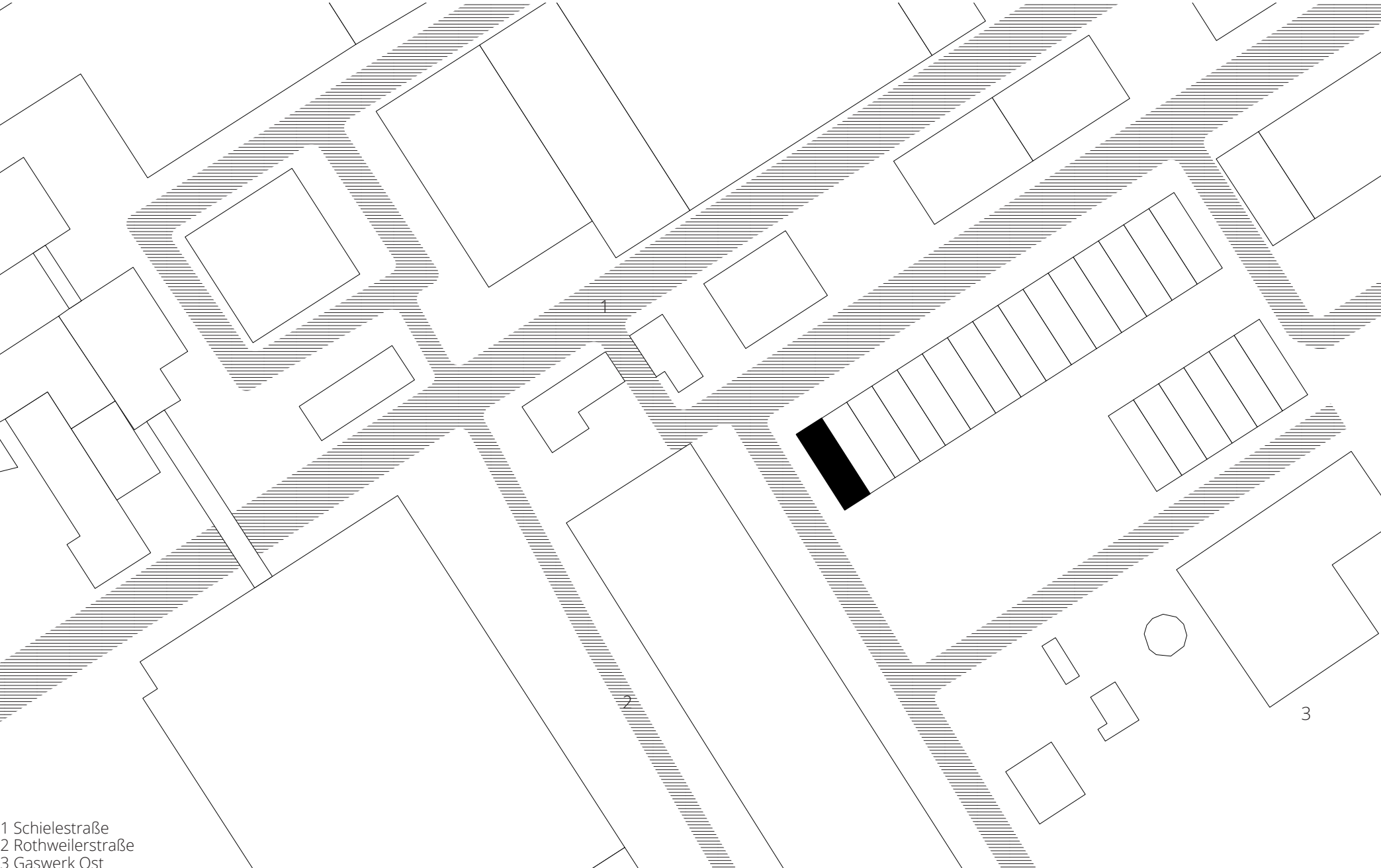


THE SIBLINGS

- 4 and 7 years old
- love running and reading
- questioning what Dad's work is
- need their own bedroom



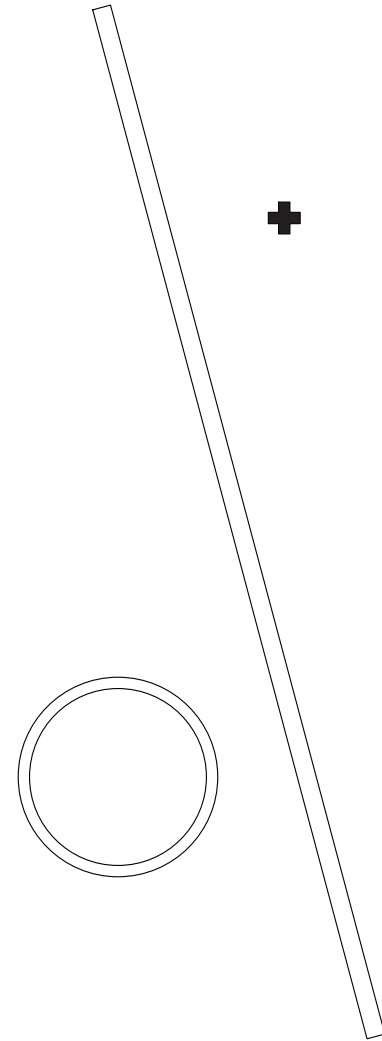
- 1 Frankfurt Ost Station
- 2 Ostpark
- 3 Gaswerk Ost



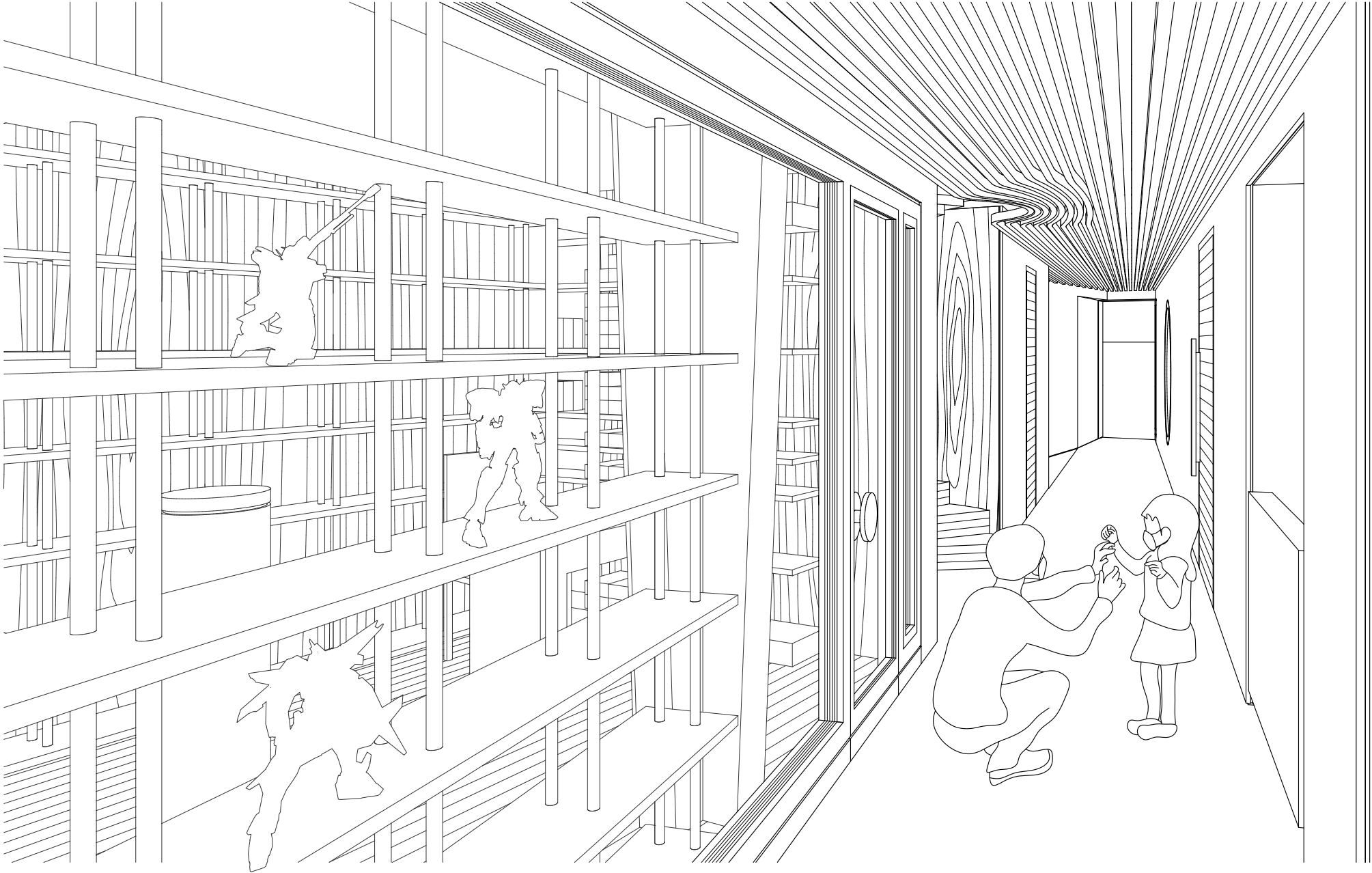
1 Schielestraße
2 Rothweilerstraße
3 Gaswerk Ost

III

ARCHITECTURE

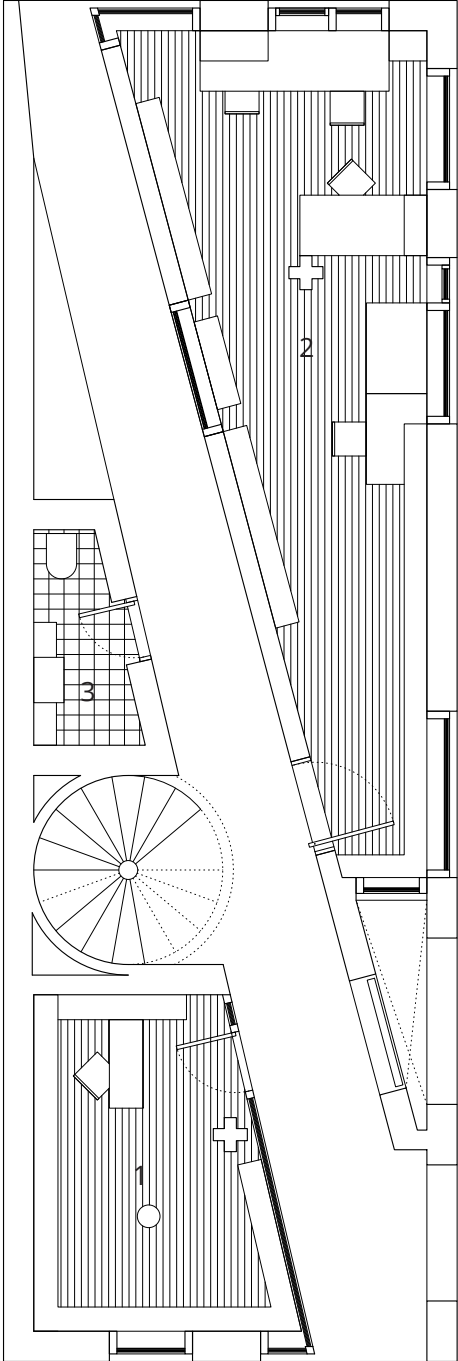
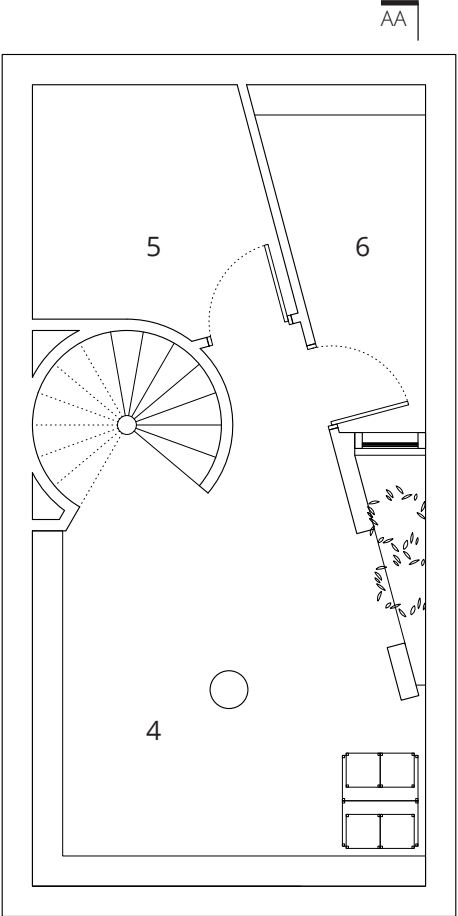


PUBLIC PASSAGE

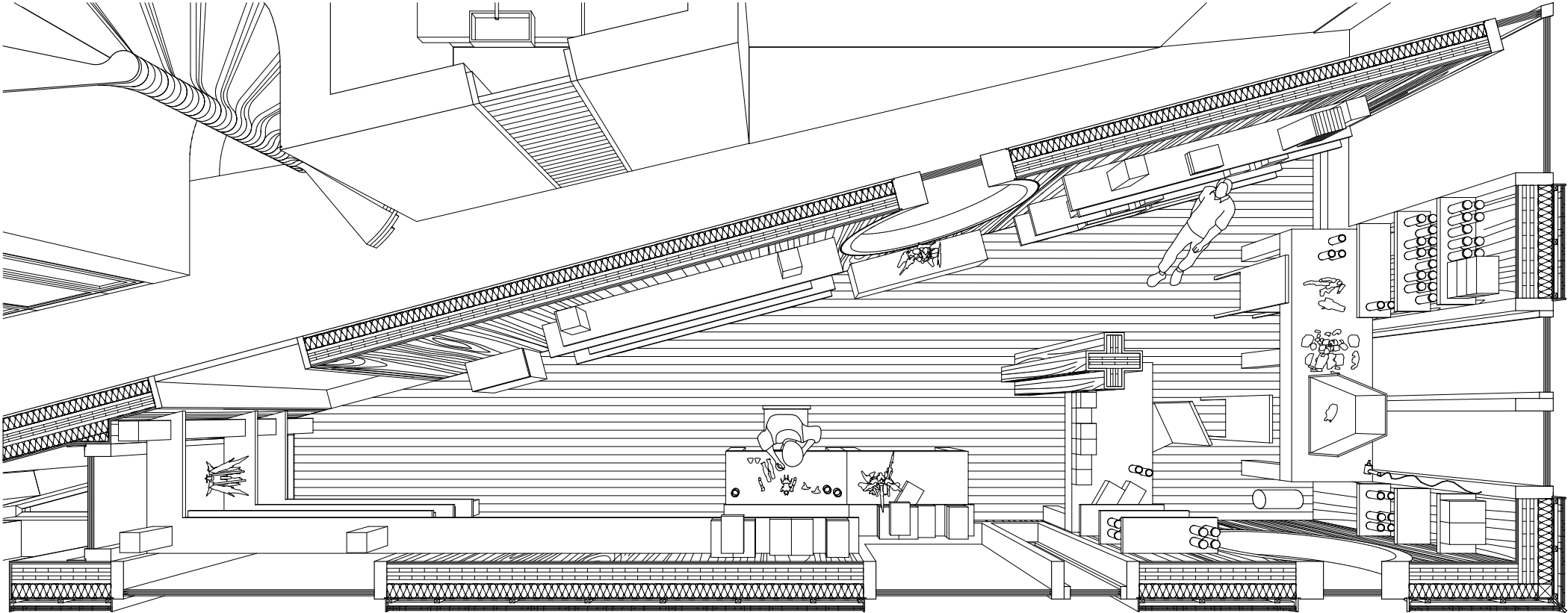


Basement | Ground Floor

- 1 Shop
- 2 Workshop
- 3 Toilet
- 4 Workshop / Community Space
- 5 Mechanical Room
- 6 Storage

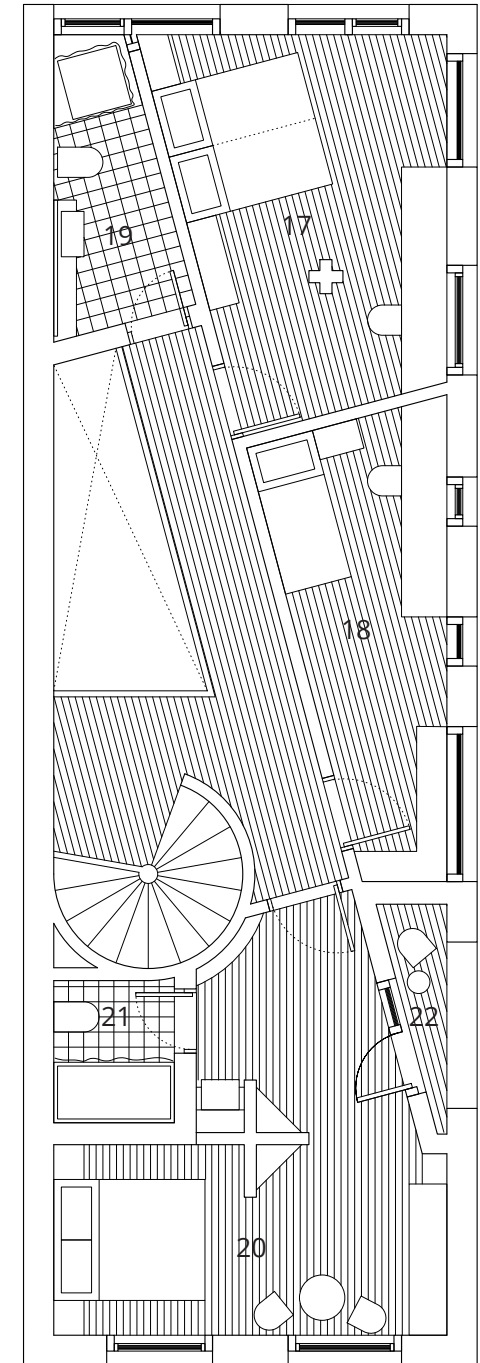
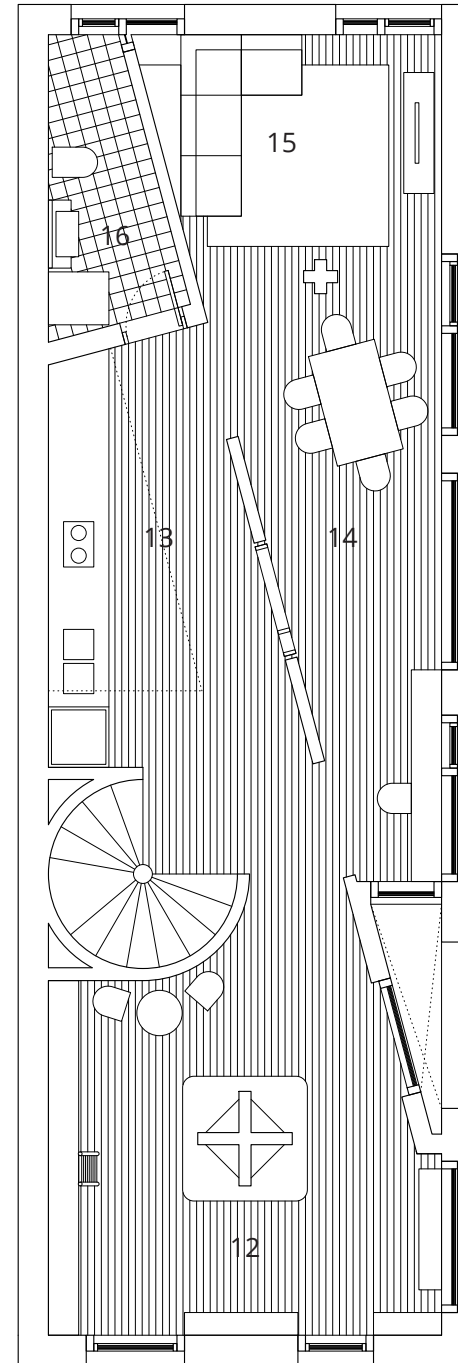
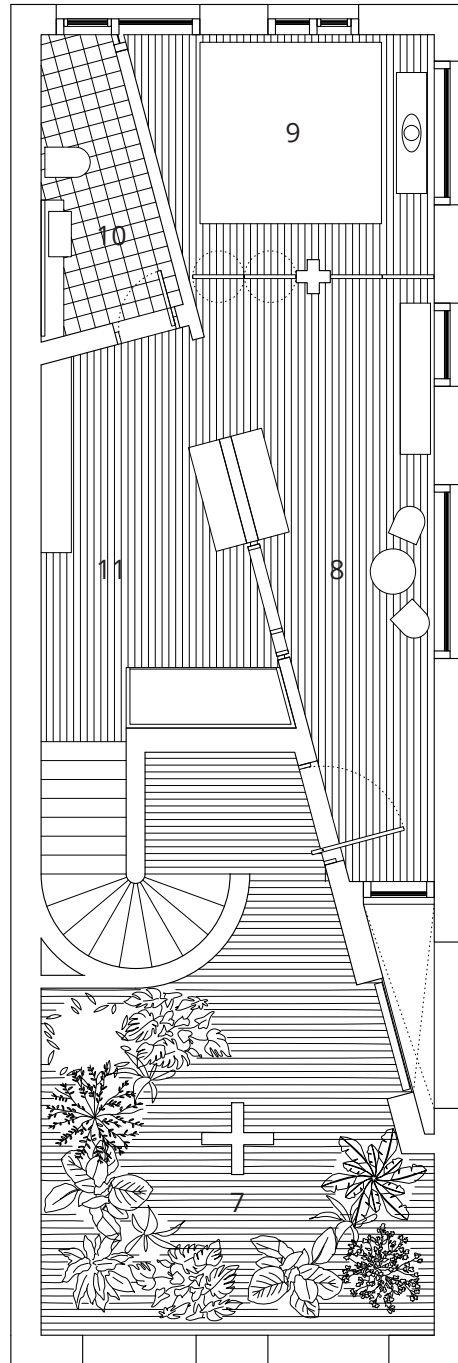


WORKSHOP PLAN



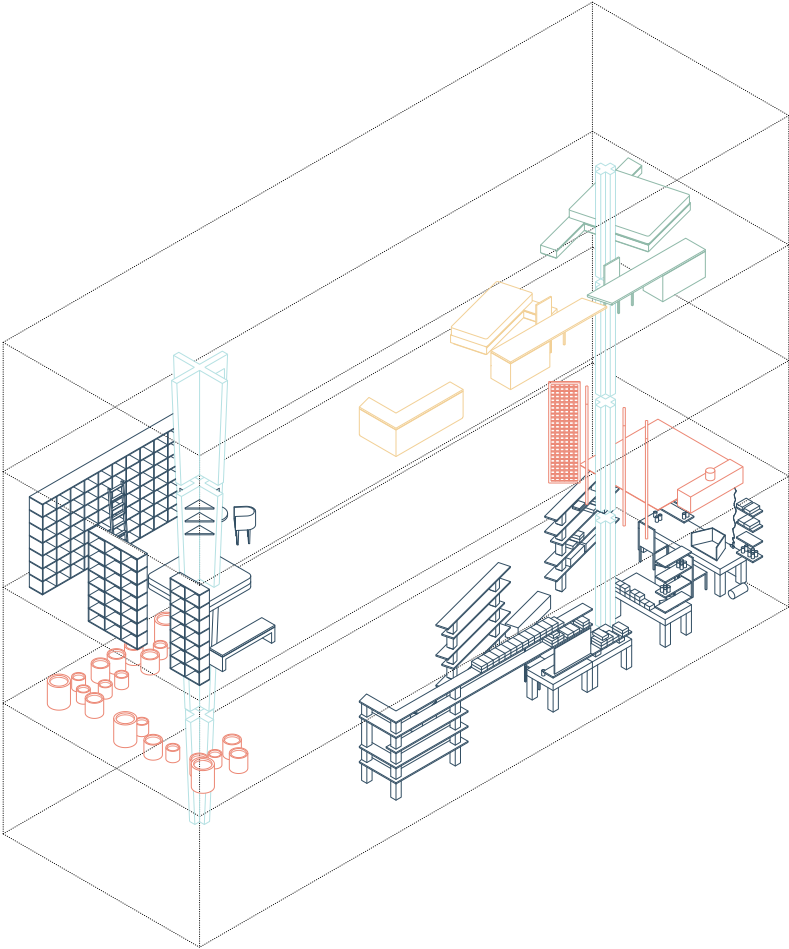
0 1 2 3





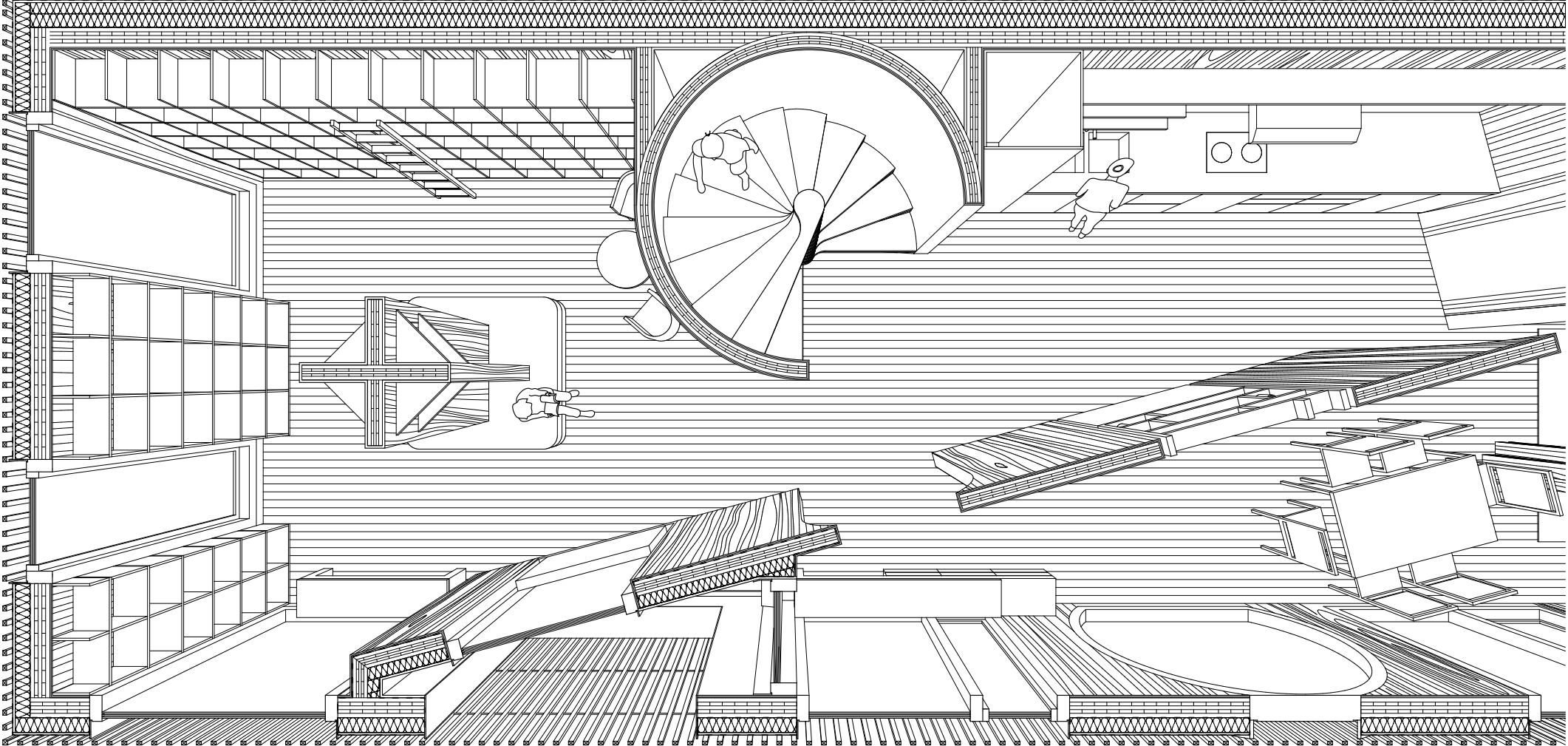
First | Second | Third Floor

- 7 Garden
- 8 Living Room
- 9 Worshipping Room
- 10 Toilet
- 11 Cloak Room
- 12 Reading Corner
- 13 Kitchen
- 14 Dining Room
- 15 Family Room
- 16 Toilet & Laundry Room
- 17 Son's Bedroom
- 18 Daughter's Bedroom
- 19 Bathroom
- 20 Main Bedroom
- 21 Main Bathroom
- 22 Balcony



- Wife
- Daughter
- Son
- The Otaku

KITCHEN & READING ROOM PLAN

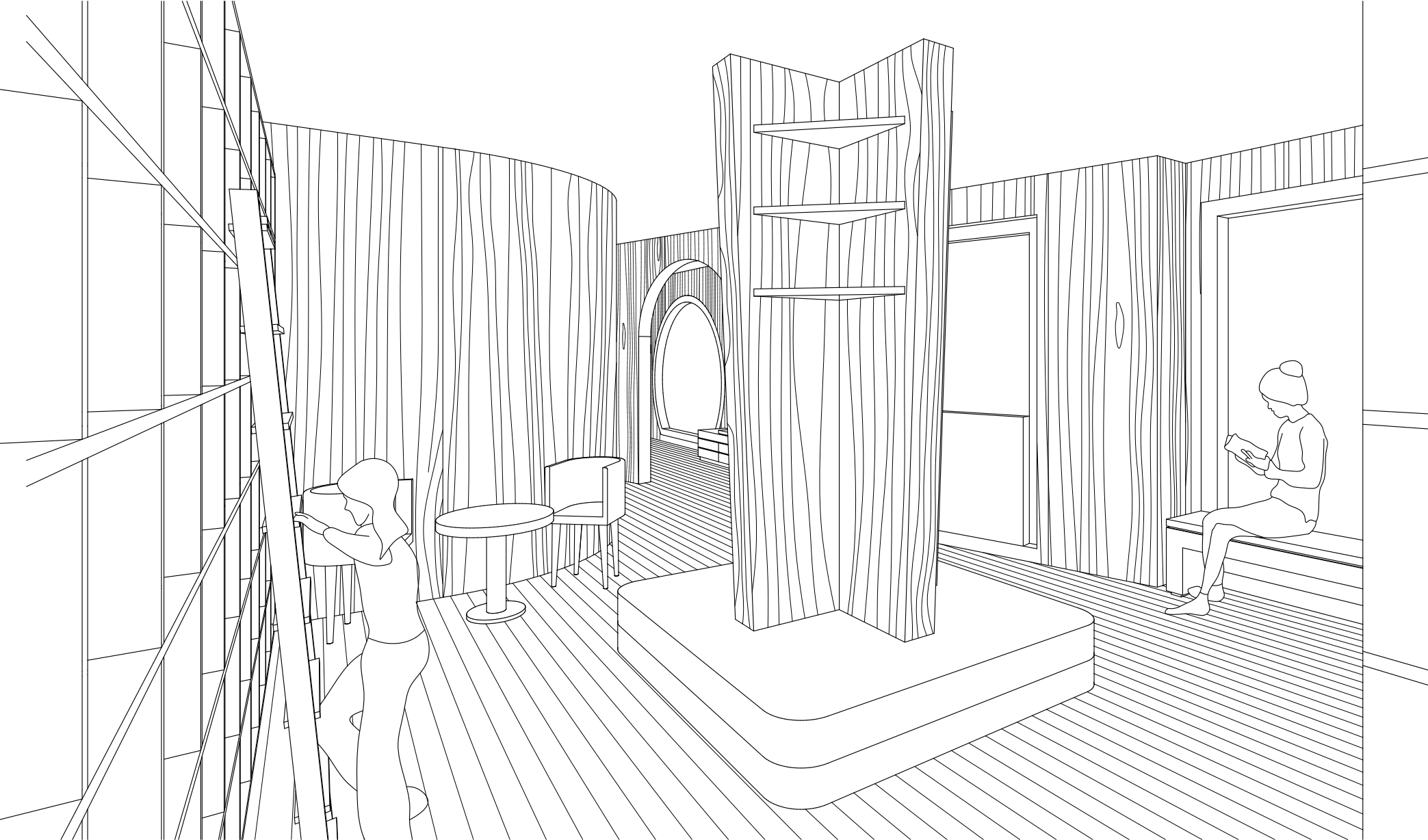


0 1 2 3

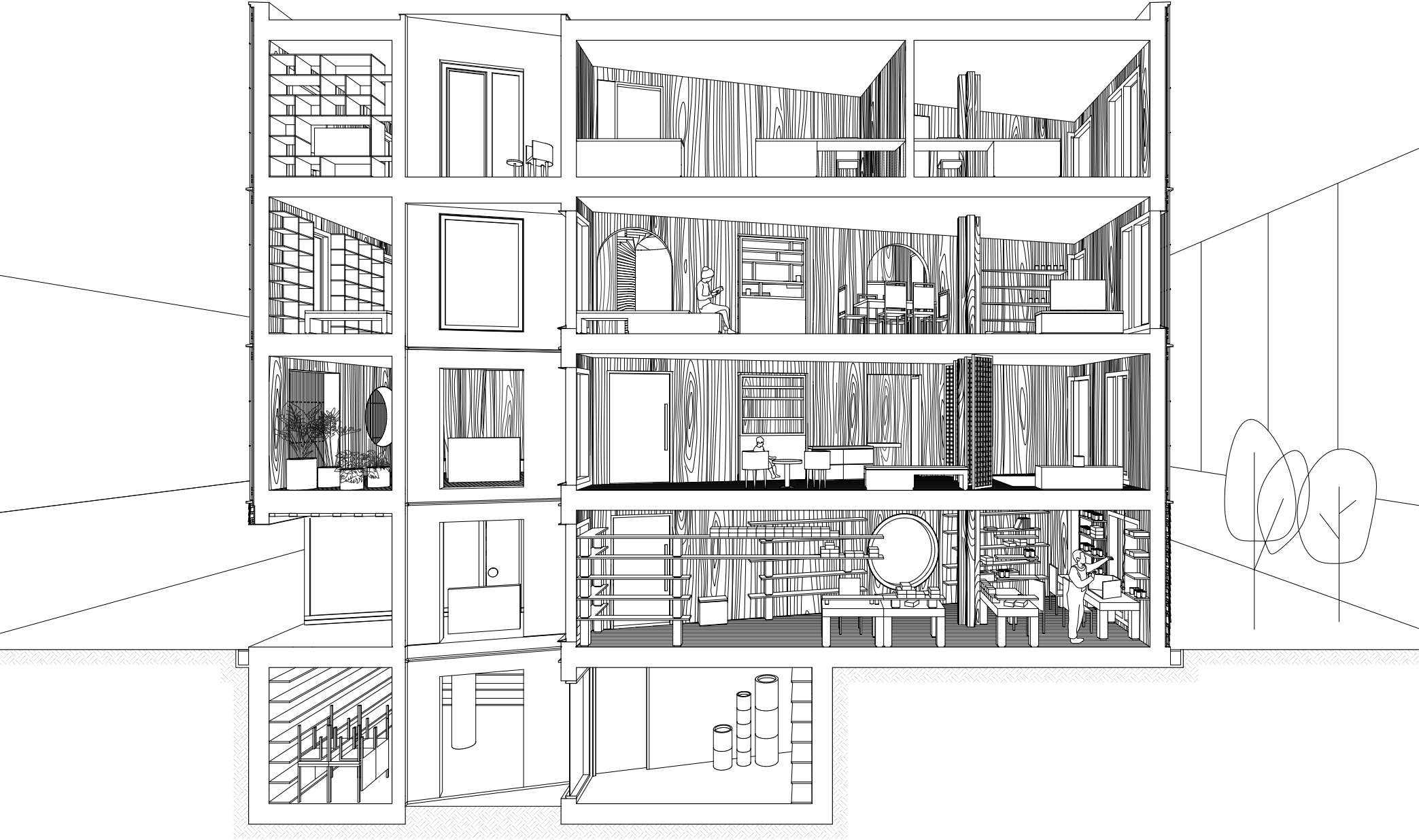
DINING ROOM PERSPECTIVE



READING ROOM PERSPECTIVE



SECTION AA | 1 : 100

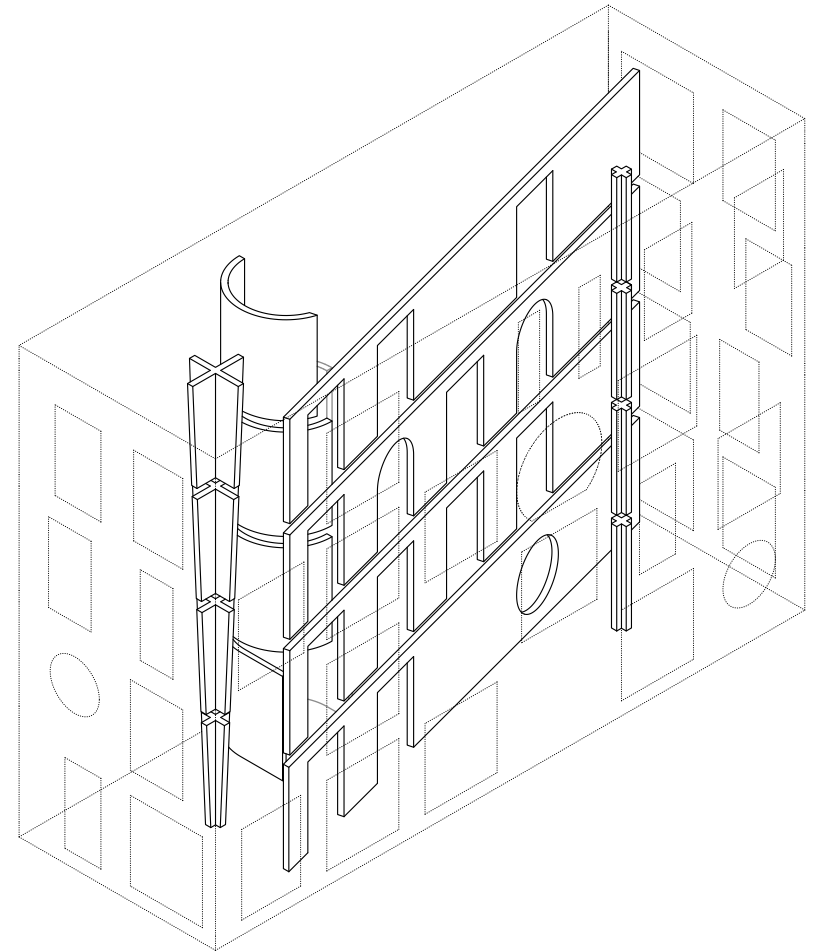


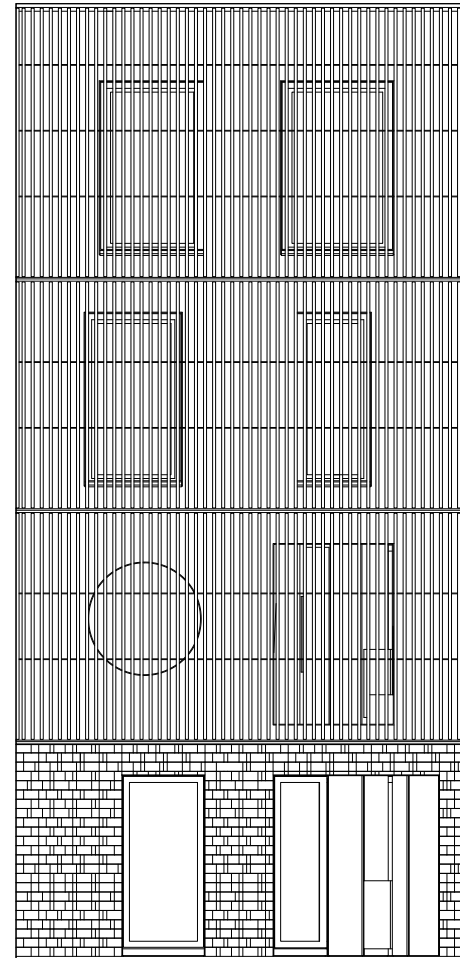
SECTION BB | 1 : 100



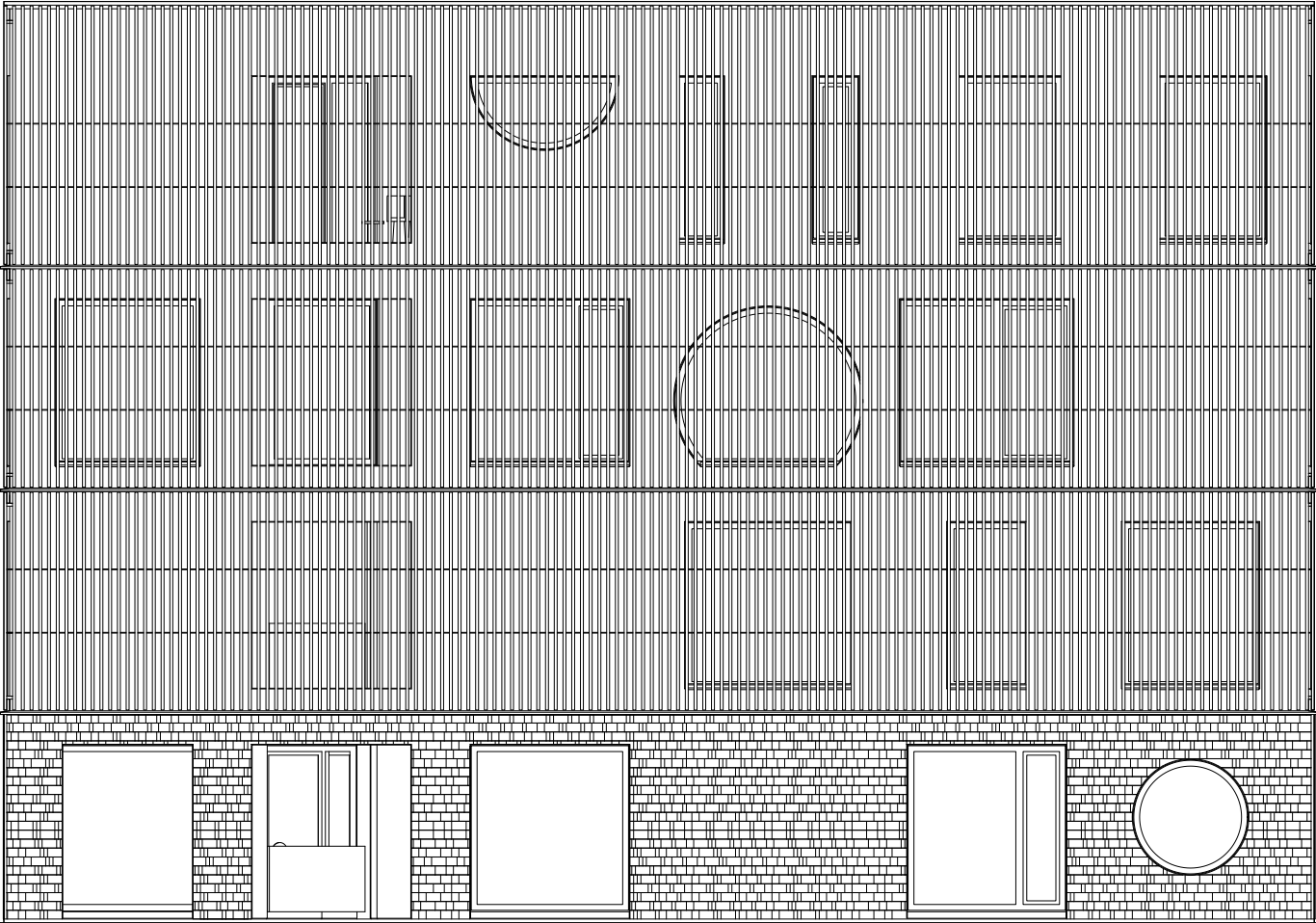
SECTION CC | 1 : 100



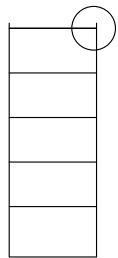




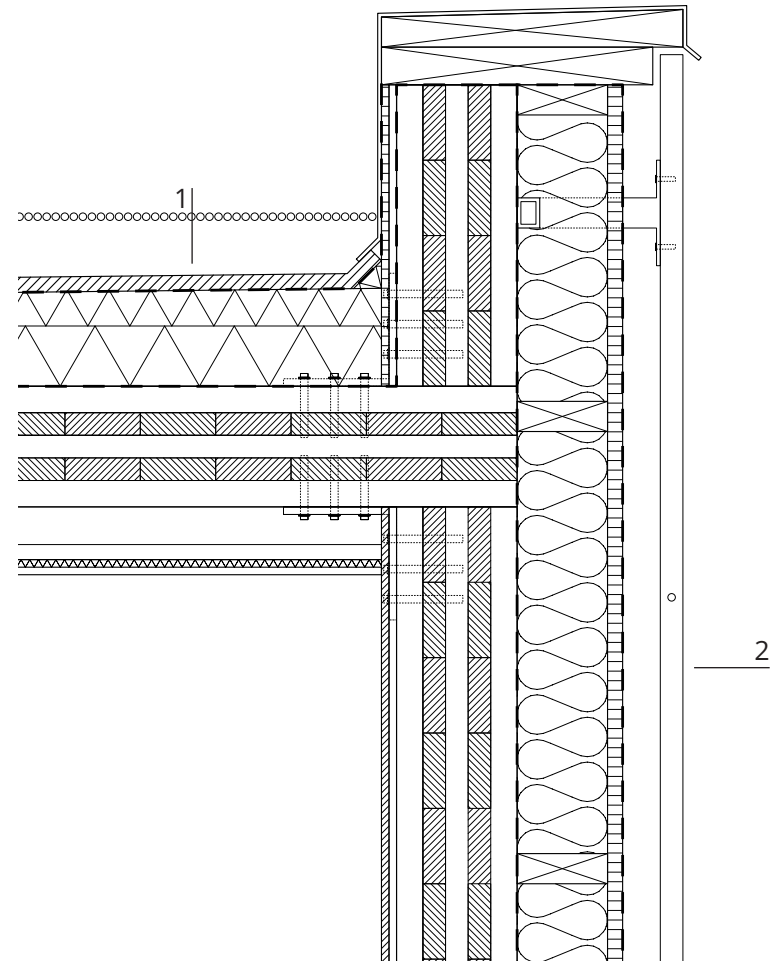
The use of shingles on the ground floor as facade material can generate the rough feeling of timber. At the same time, it emphasizes the different functions between the ground level and the levels above it. The facade is trying to be playful by utilizing the CLT character. Which CLT has the potential to be made in complex shape with a CNC machine. The fact that the building also functioned as a house, It needs some privacy. To provide this privacy, also not cover the playfulness of the facade, vertical timber screens is used.

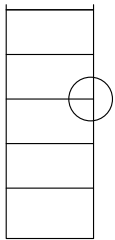






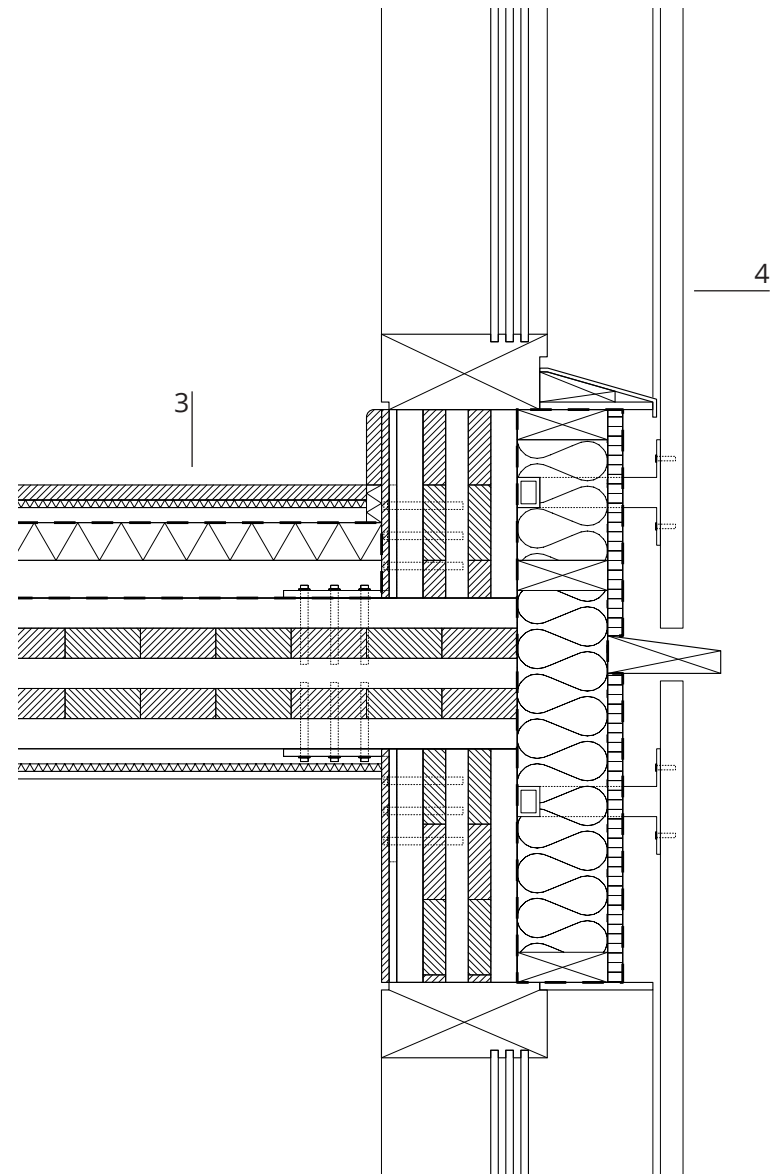
- 1 80 mm bed of gravel; 20 mm bitumen; sealing layer; 50-100 mm hard insulation slabs to fall; 80 mm hard insulation; vapour barrier; 200 mm cross laminated timber; installation gap; 30/40 mm wood battens; sheeps' wool sound insulation; 9 mm plaster board finish white paint
- 2 vertical boarding with joints: 30/40 mm hardwood/oak, untreated, rough sawn, screws visible; black-coloured water proofing layer; 20 mm MDF; 120 mm rock-wool thermal insulation; vapour barrier; 160 mm cross laminated timber; gypsum board; wood board

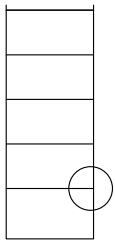




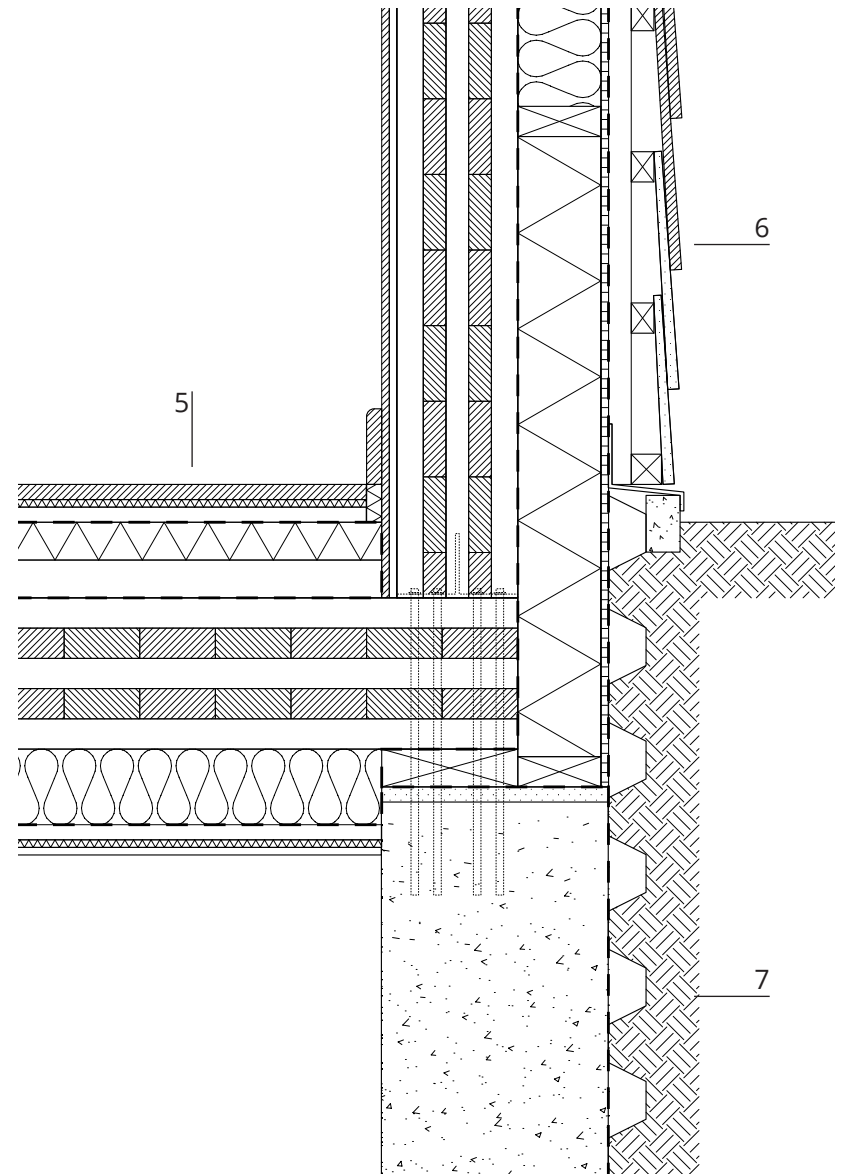
3 20 mm fir parquet; impact sounds insulation; installation gap; separating layer; 50 mm hard insulation; 50 mm dry screed; separating layer; 200 mm cross laminated timber; 30/40 mm timber battens; sheeps' wool sound insulation; 9 mm plaster board finish white paint

4 triple glazed on 100/220 mm timber frame





- 5 20 mm fir parquet; impact sounds insulation; installation gap; separating layer; 50 mm hard insulation; 50 mm dry screed; separating layer; 200 mm cross laminated timber; 100 mm rock-wool insulation; 30/40 mm timber battens; sheeps' wool sound insulation; 9 mm plaster board finish white paint
- 6 fiber glass shingles on the first 300 mm from the ground, single-lapped wood shingles 20 mm sawn t.; 30/40 mm battens; ventilated cavity; black-coloured water proofing layer; 10 mm MDF; 110 mm hard thermal insulation; vapour barrier; 160 mm cross laminated timber; gypsum board; wood board
- 7 studded membrane; geo textile layer; 300 mm concrete wall



MODEL





