

'TERRAIN VAGUE'  
MASTER THESIS WS 20/21

# KULTURBAHNHOF MAINZ-KASTEL







MAINZ-KASTEL

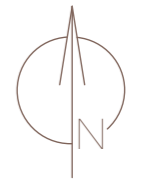
MAINZ-KOSTHEIM

RHEIN

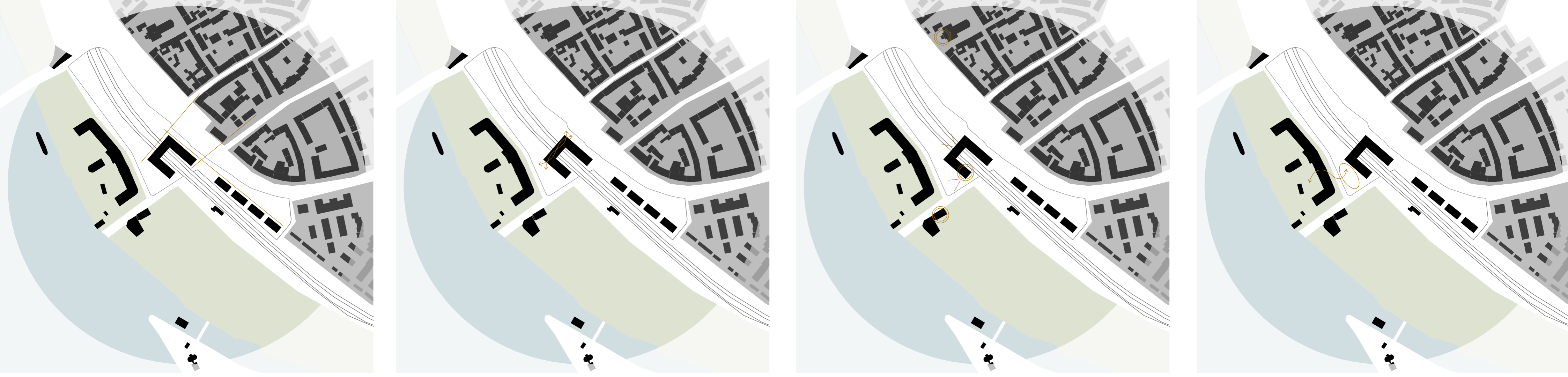
MAINZ-ALTSTADT

- BEBAUUNG
- GRÜNFLÄCHEN
- HAUPTSTRABEN
- SCHIENEN
- WASSER
- GRENZEN
- FÄHRE
- GRUNDSTÜCK

50° 0' 35" N, 8° 17' 4" E  
M 1:2000







STELLPLATZ FAHRRÄDER

KULTURPLATZ

AUSSTELLUNG

GASTRONOMIE

BAHNHOF

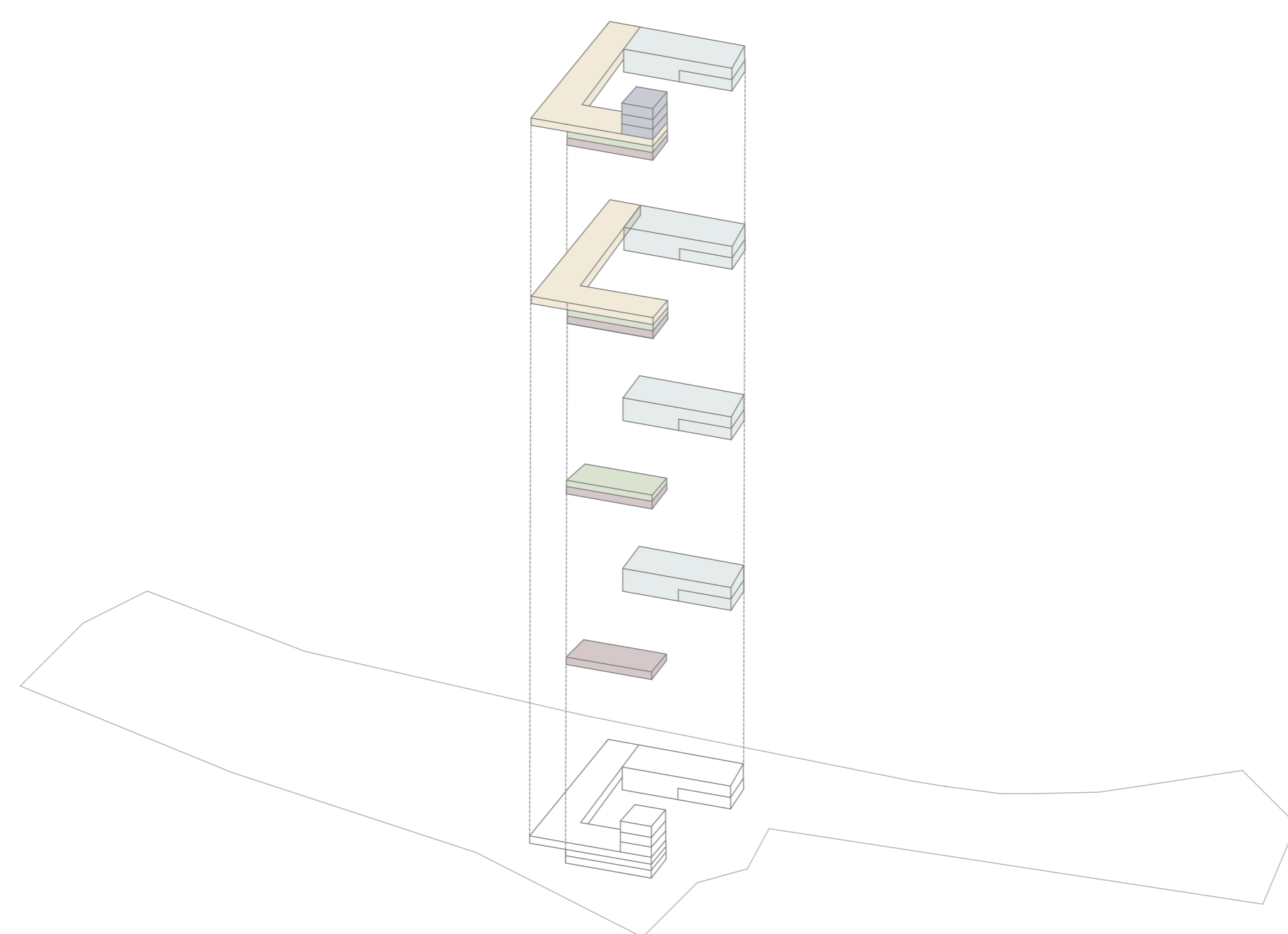
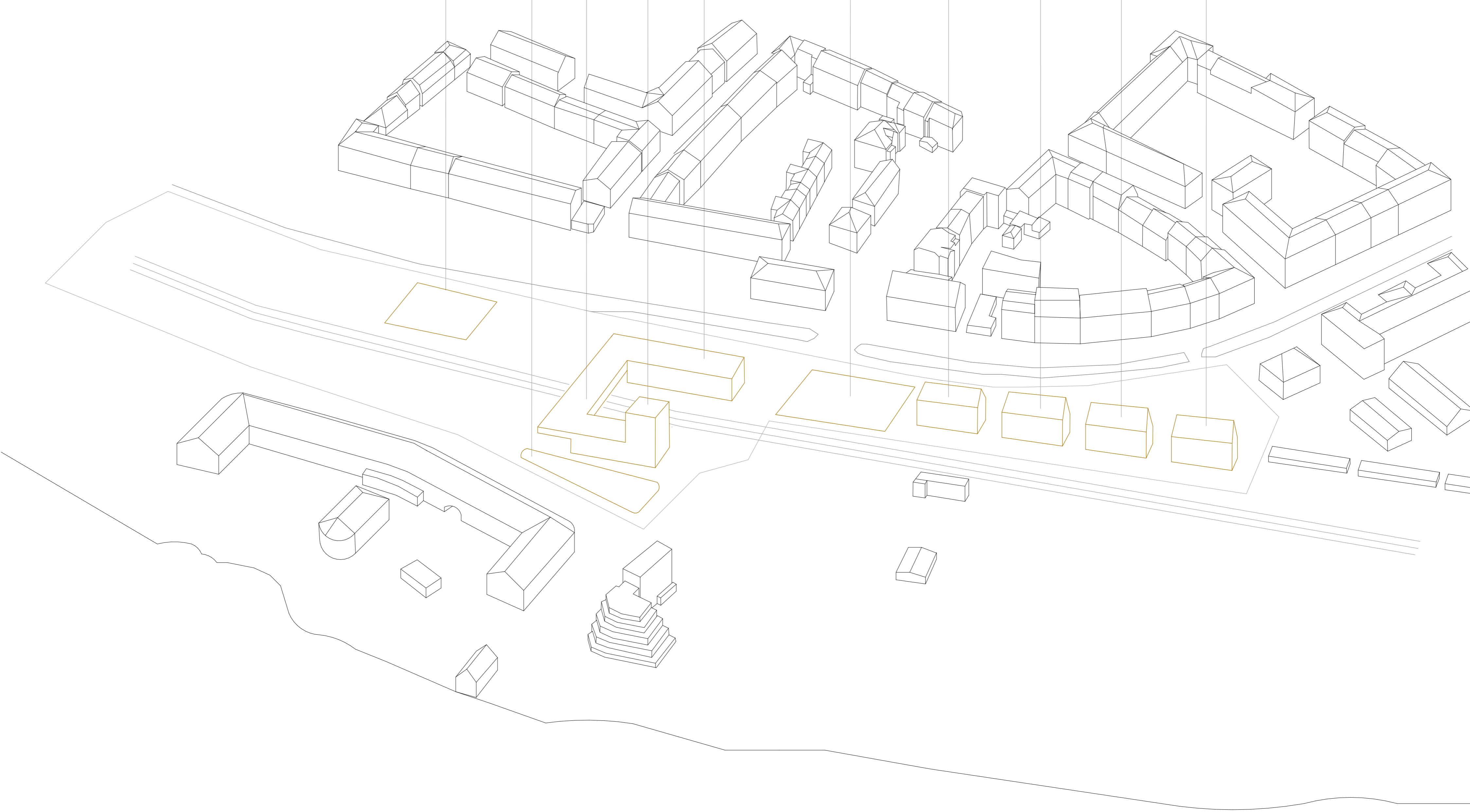
CAR SHARING

GEWERBE

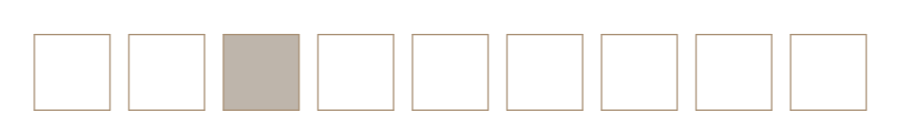
GEWERBE

STUDENTISCHES WOHNEN

STUDENTISCHES WOHNEN



- GASTRONOMIE
- AUSSTELLUNG / DURCHGANG
- ATELIERS, VERANSTALTUNG
- BAHNHOF / SERVICE
- KUNSTSHOP











ANSICHT OST M 1:200



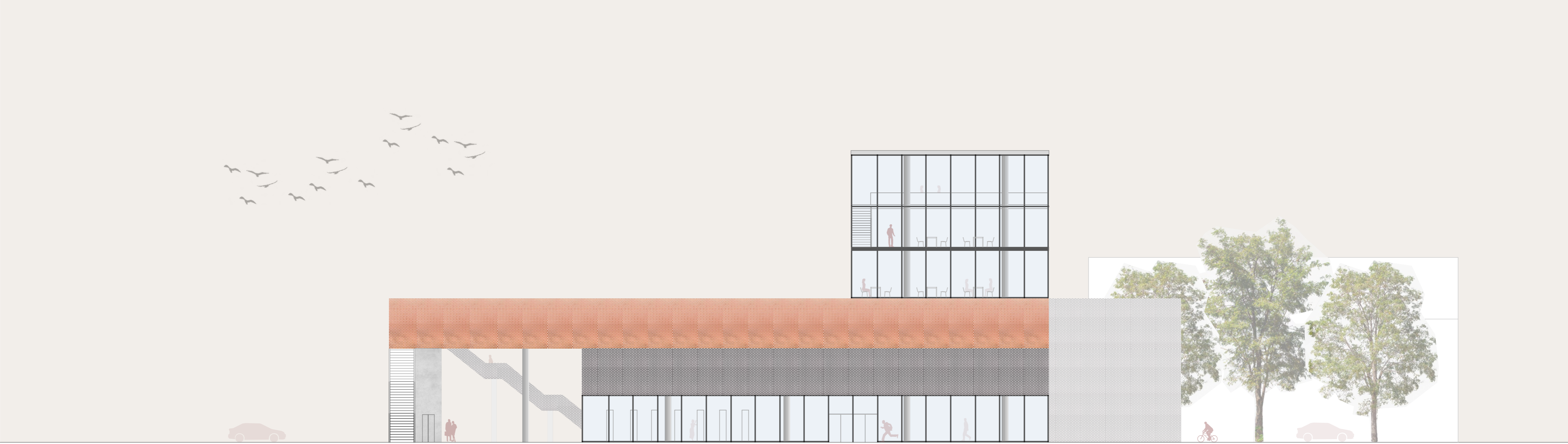
GRUNDRISS EG M 1:200



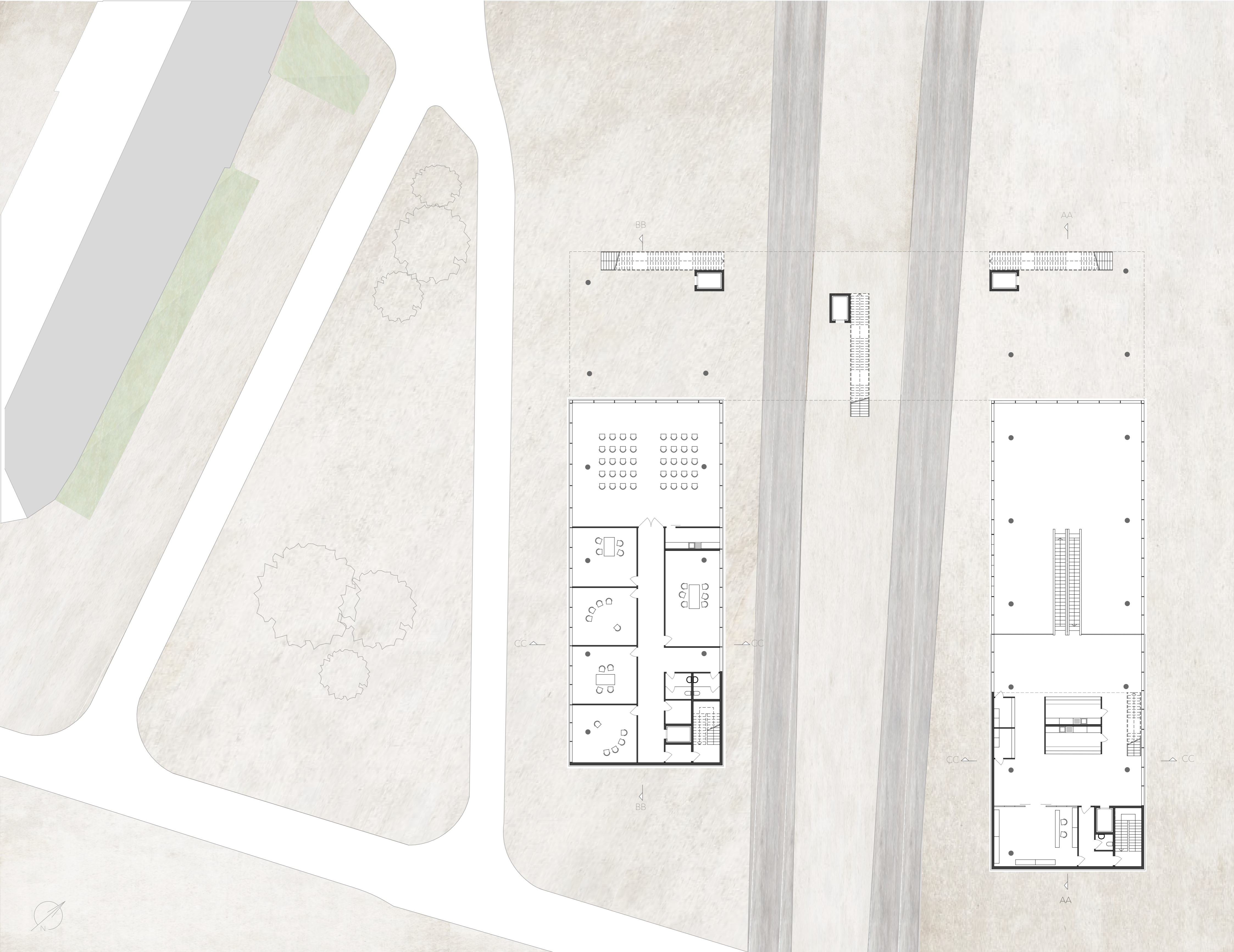
SCHNITT - AA M 1:200







ANSICHT NORD M 1:200



GRUNDRISS 1.OG M 1:200



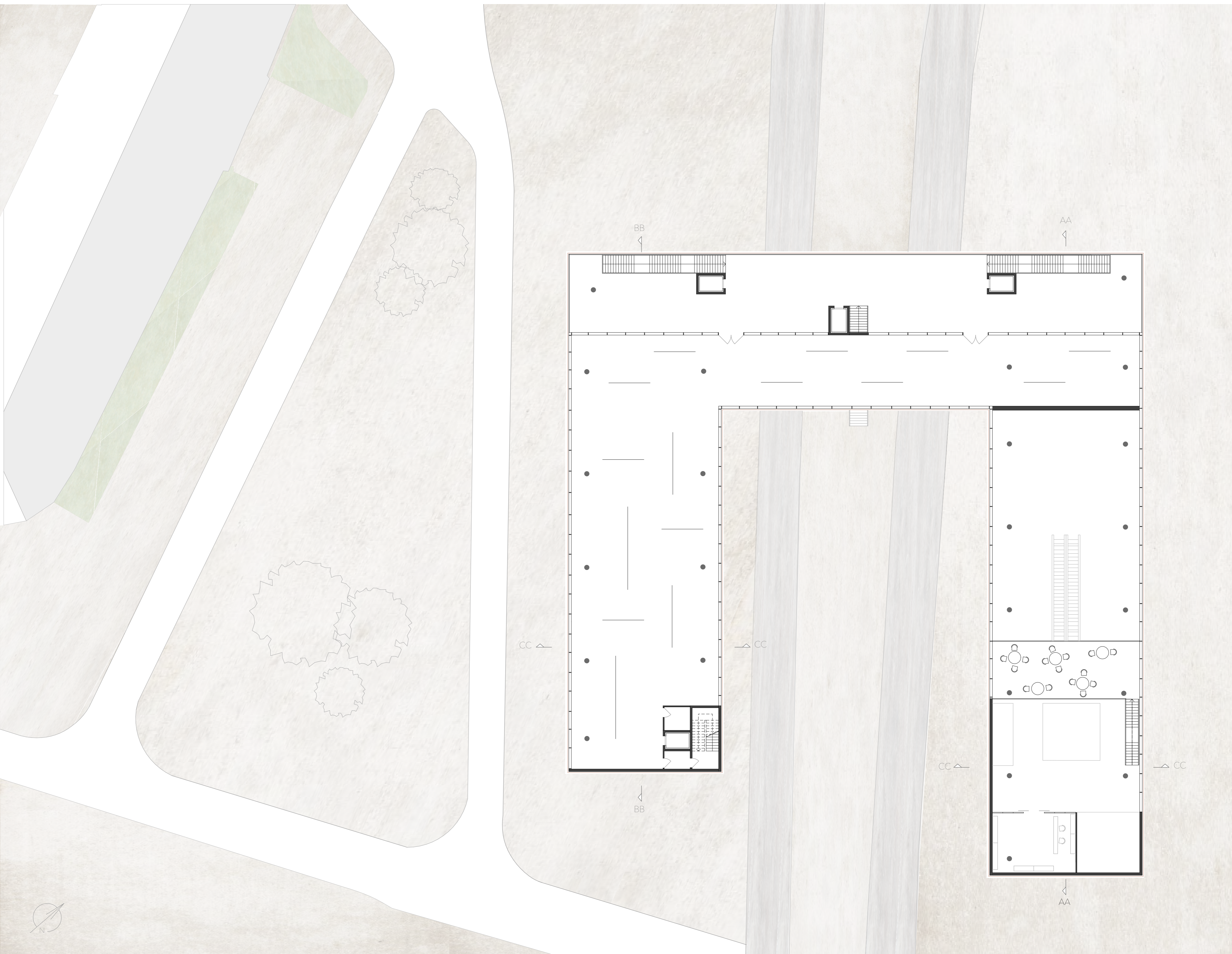
SCHNITT - CC M 1:200







ANSICHT WEST M 1:200



GRUNDRISS 2.OG M 1:200



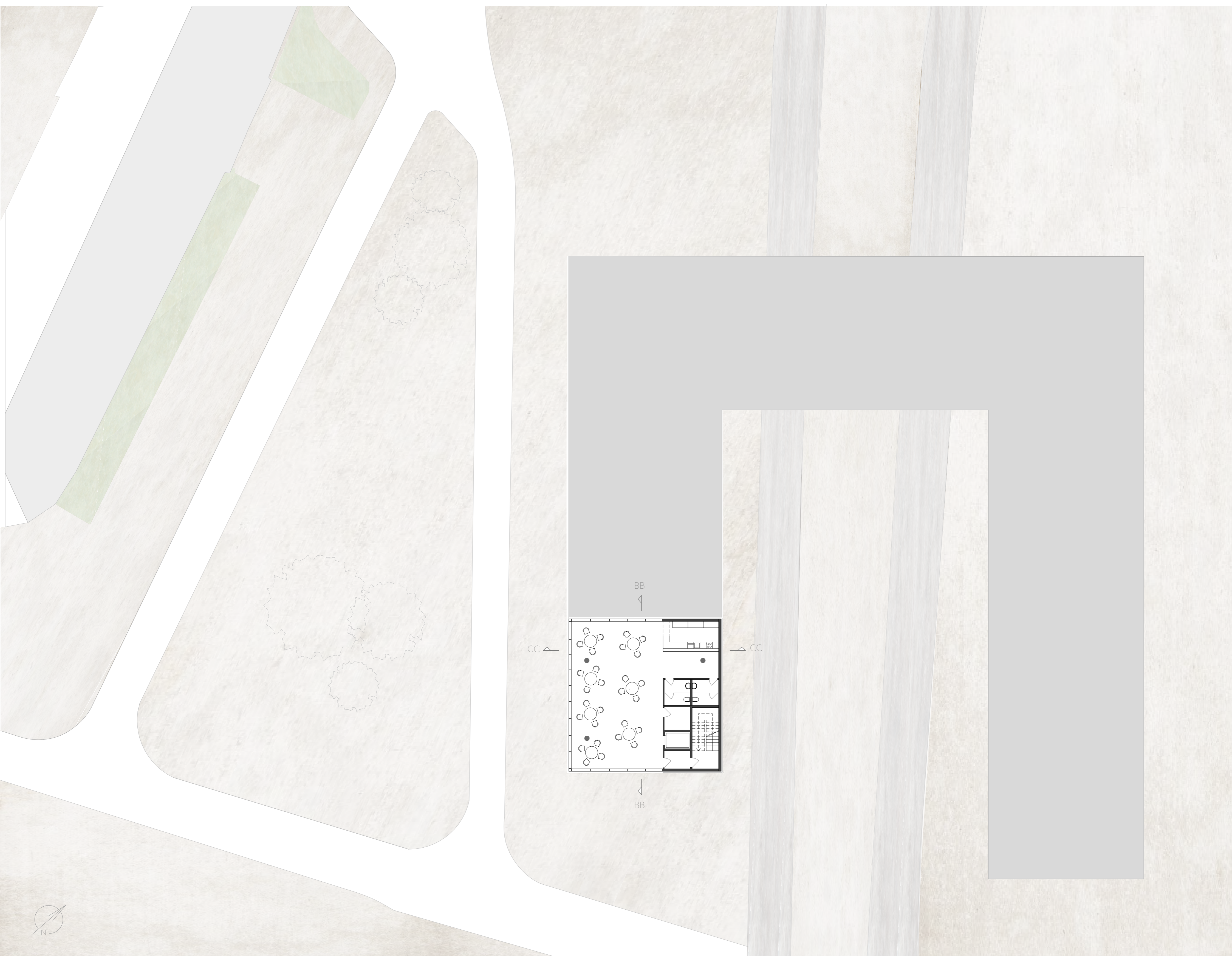
SCHNITT - BB M 1:200



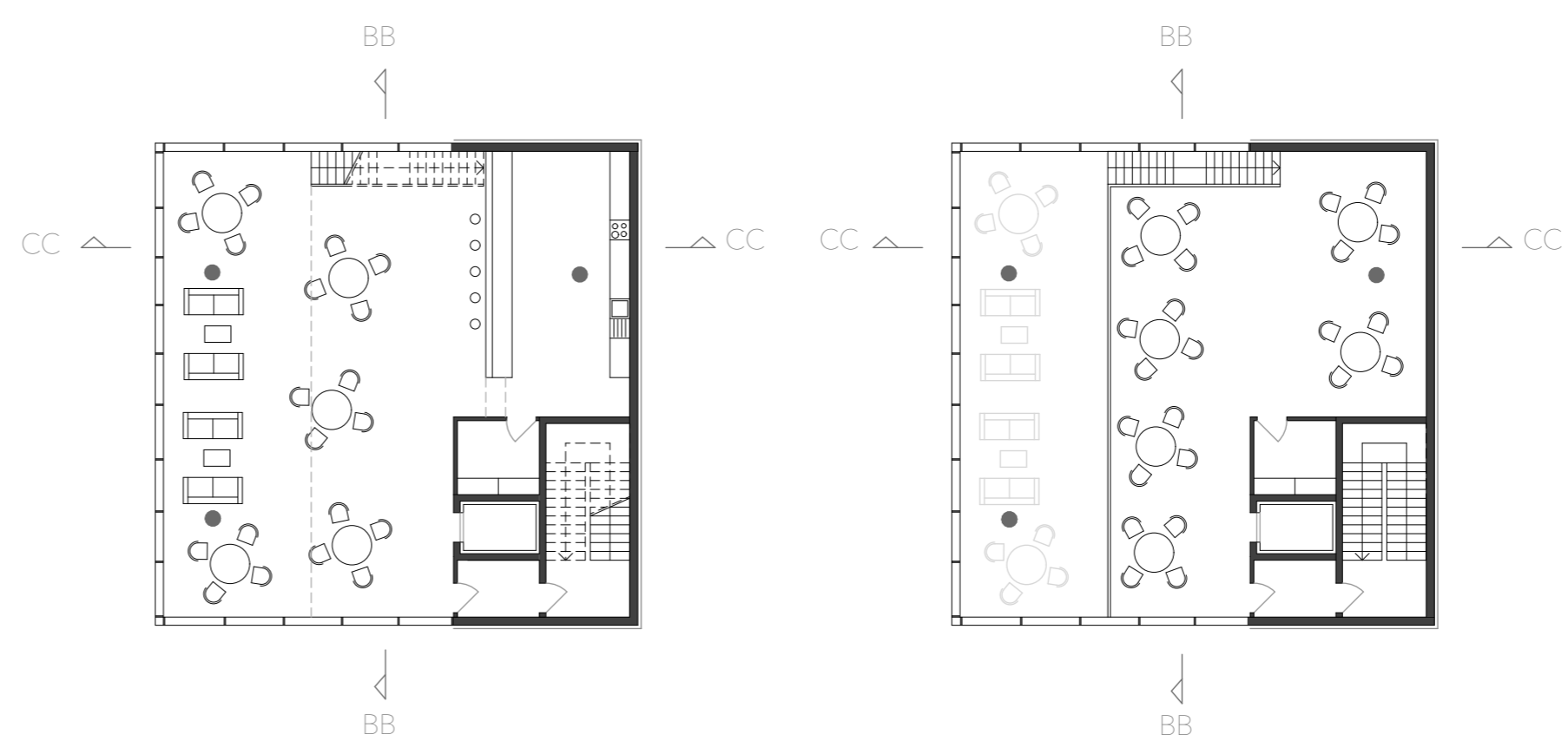




ANSICHT SÜD M 1:200



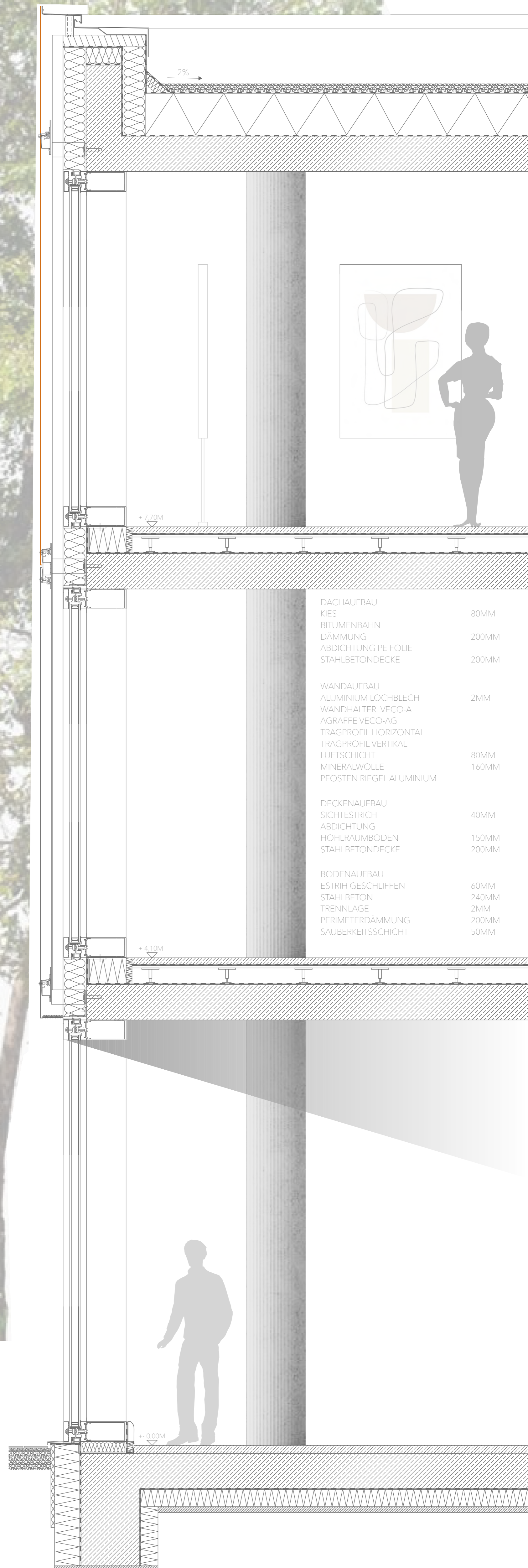
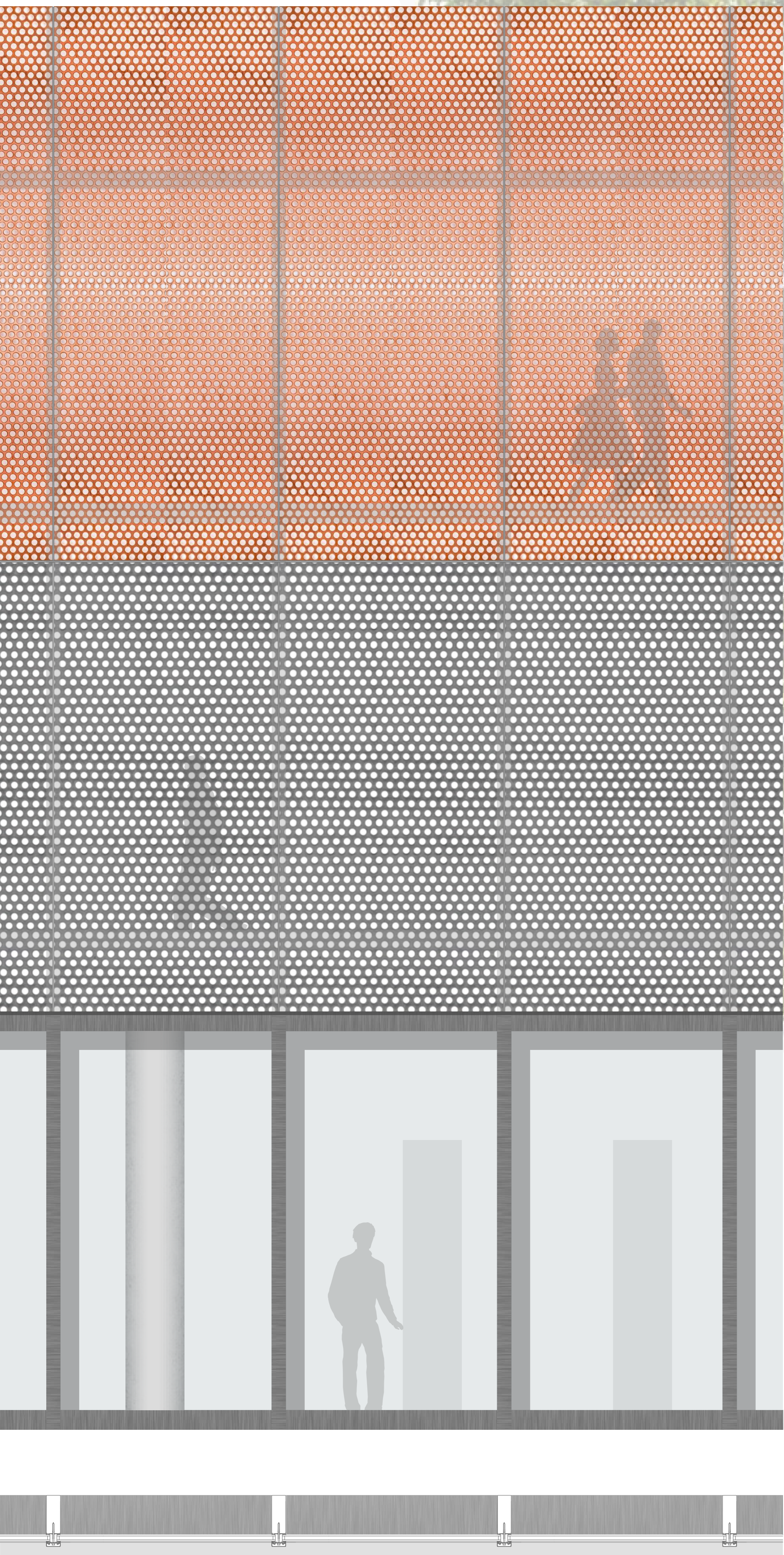
GRUNDRISS 3.OG M 1:200



GRUNDRISSE 4.OG & 5.OG M 1:200







<b>DACHAUFBAU</b>	
KIES	80MM
BITUMENBAHN	
DÄMMUNG	200MM
ABDICHTUNG PE FOLIE	
STAHLBETONDECKE	200MM
<b>WANDAUFBAU</b>	
ALUMINIUM LOCHBLECH	2MM
WANDHALTER VECO-A	
AGRAFFE VECO-AG	
TRAGPROFIL HORIZONTAL	
TRAGPROFIL VERTIKAL	
LUFTSCHICHT	80MM
MINERALWOLLE	160MM
PFOSTEN RIEGEL ALUMINIUM	
<b>DECKENAUFBAU</b>	
SICHTESTRICH	40MM
ABDICHTUNG	
HOHLRAUMBODEN	150MM
STAHLBETONDECKE	200MM
<b>BODENAUFBAU</b>	
ESTRICH GESCHLIFFEN	60MM
STAHLBETON	240MM
TRENNLAGE	2MM
PERIMETERDÄMMUNG	200MM
SAUBERKEITSSCHICHT	50MM

