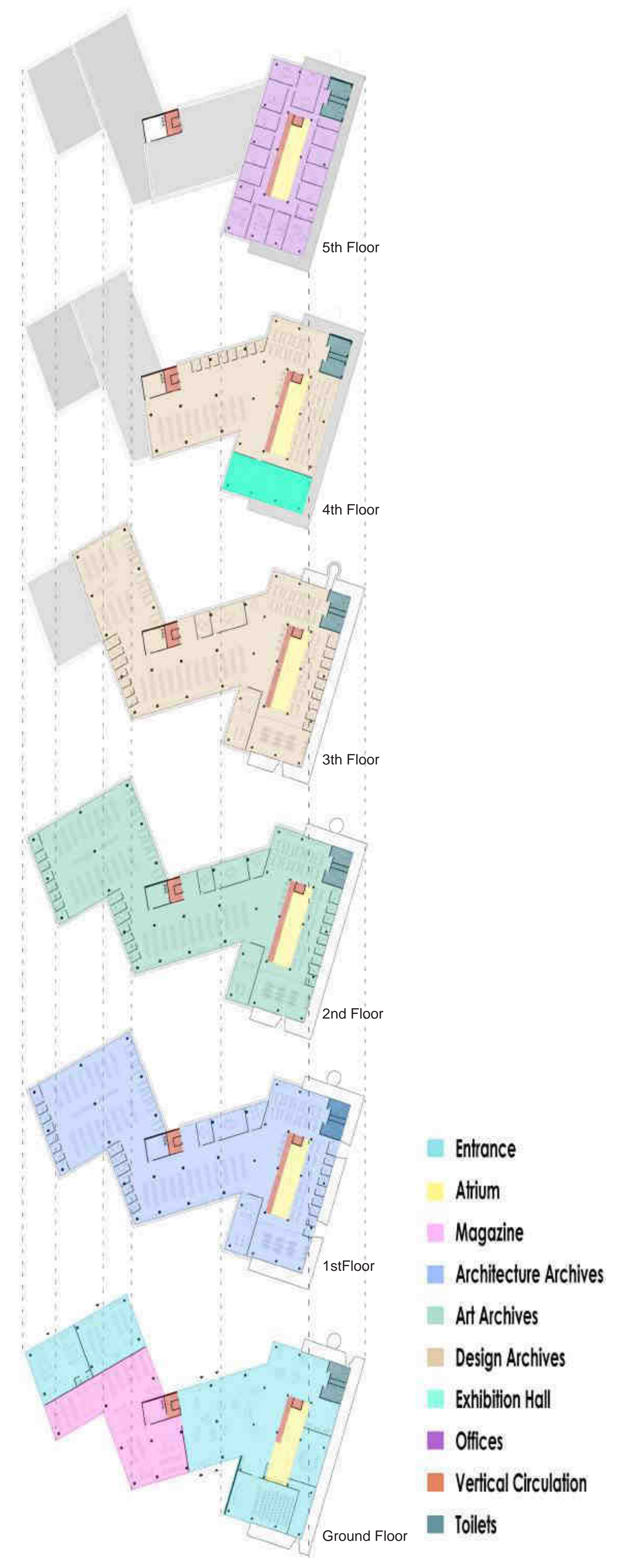
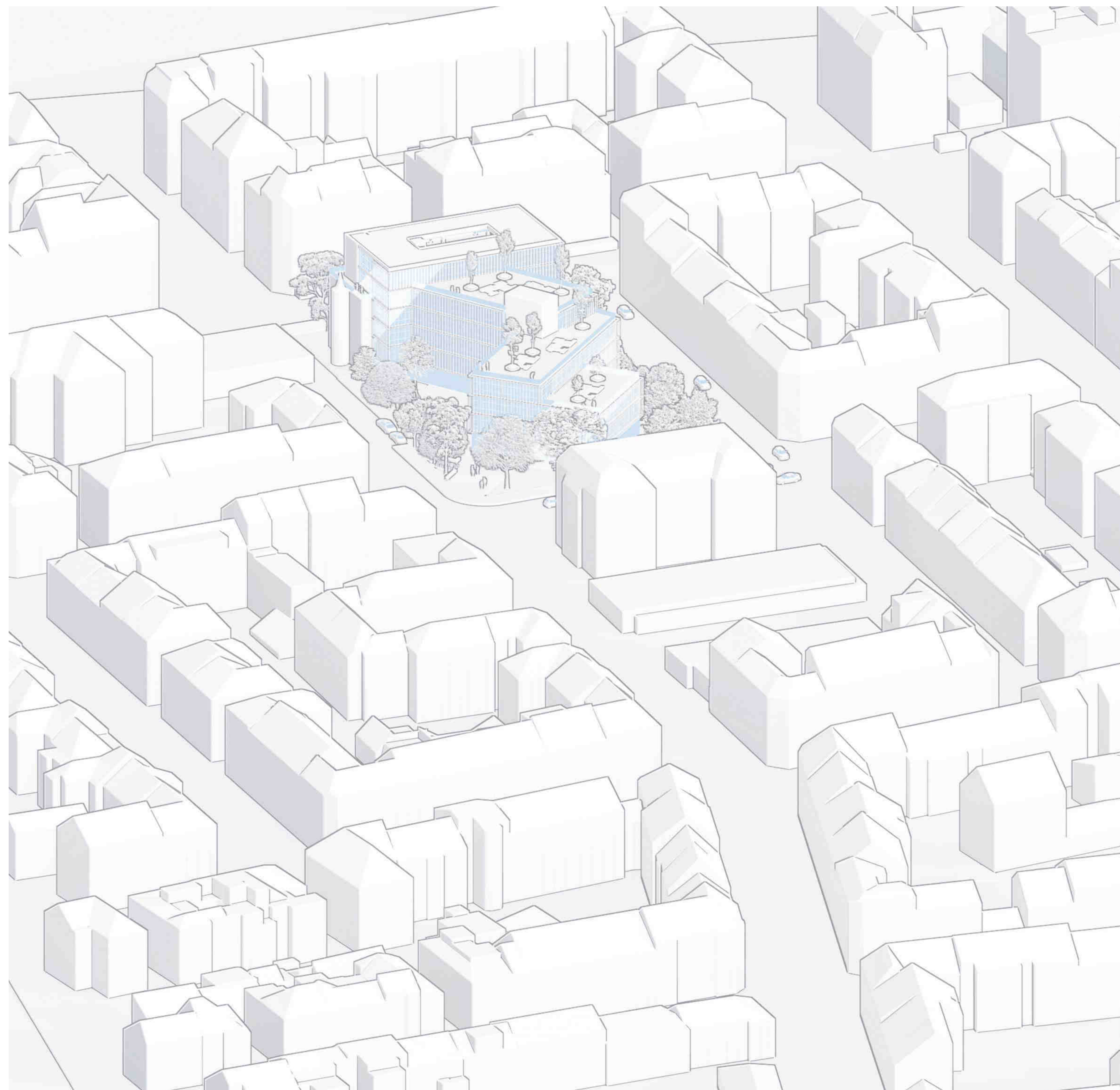
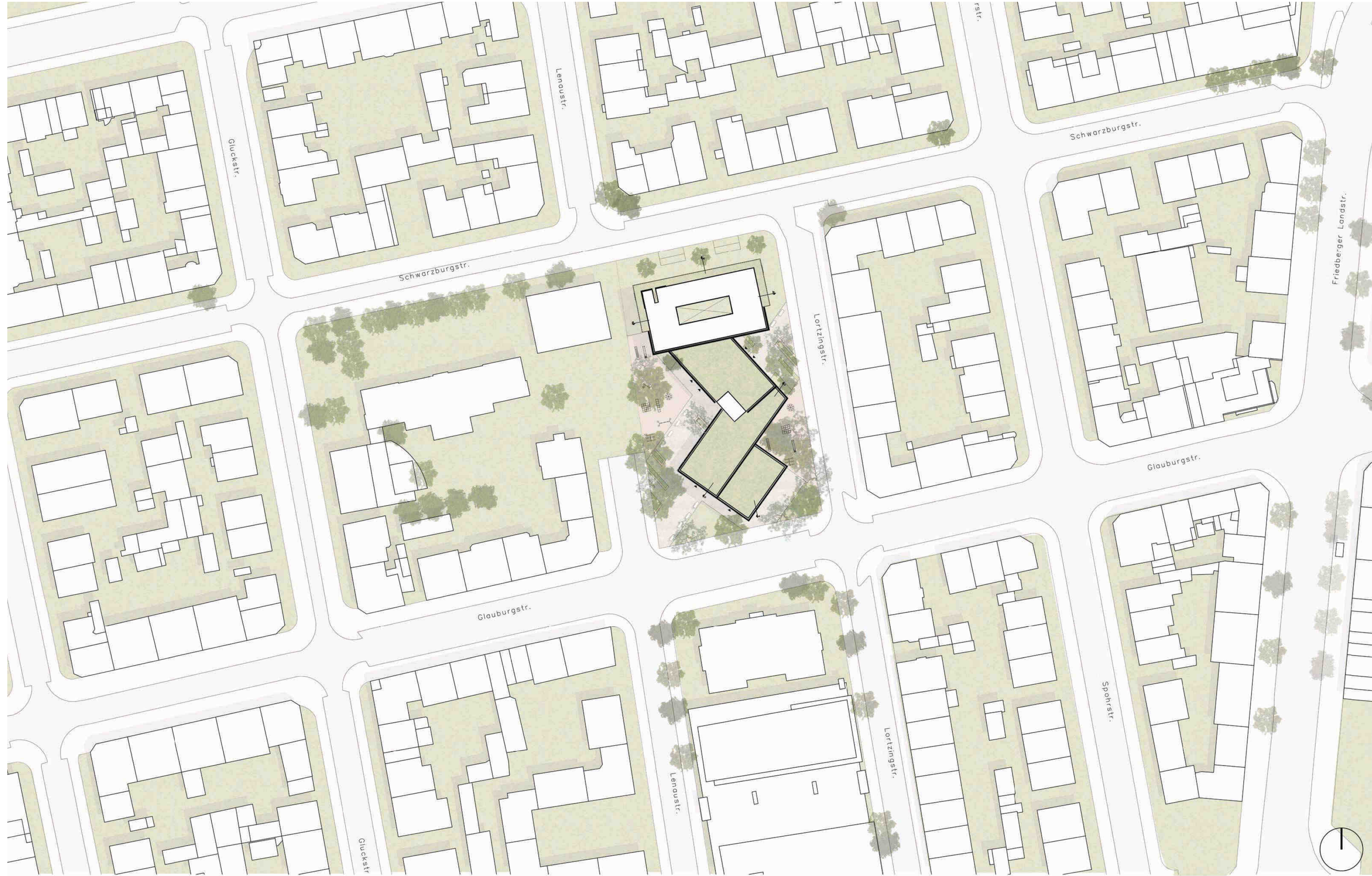


Hessische Landesbibliothek für Kunst, Design und Architektur

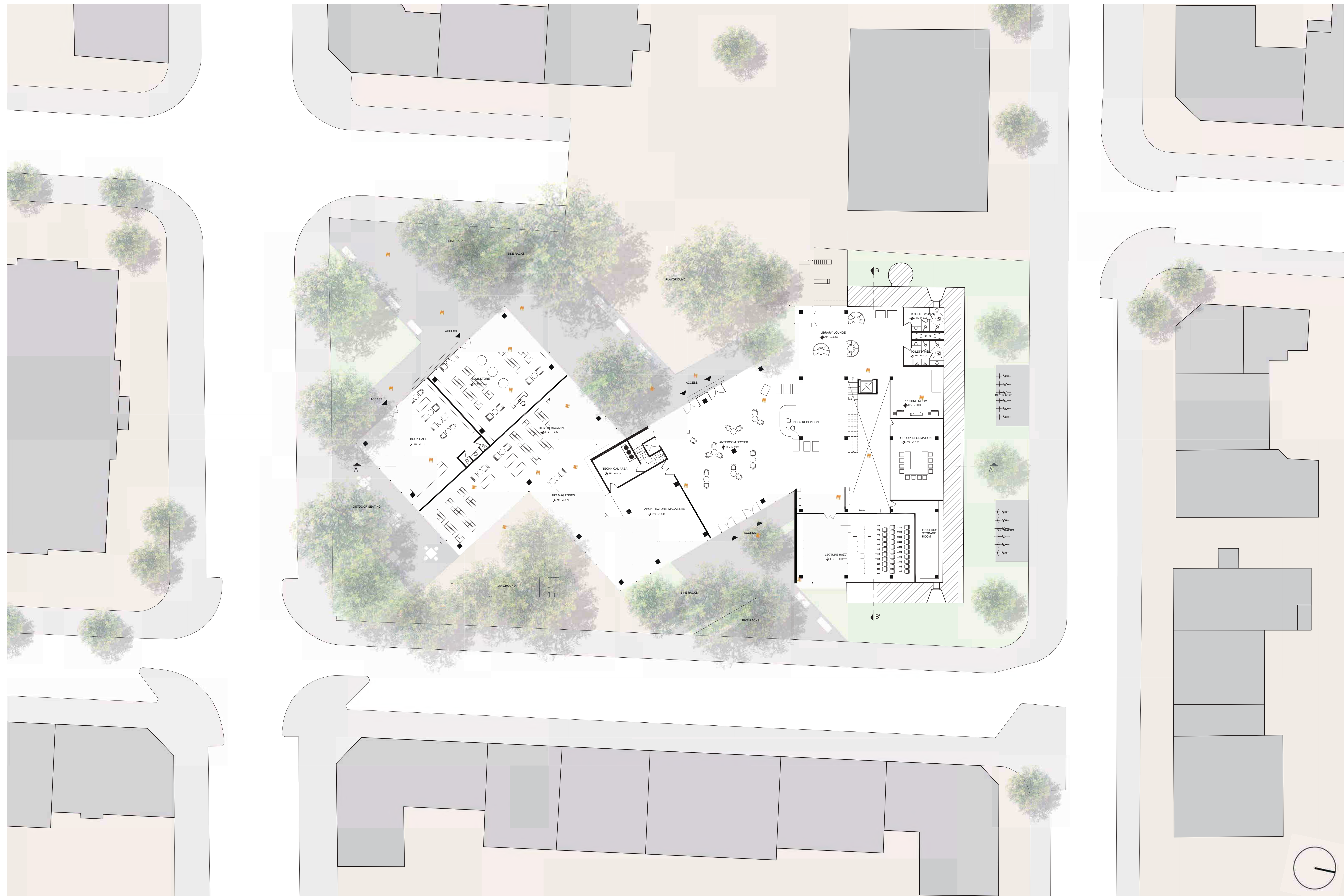


Urban structure 1:1000





Site plan 1:500



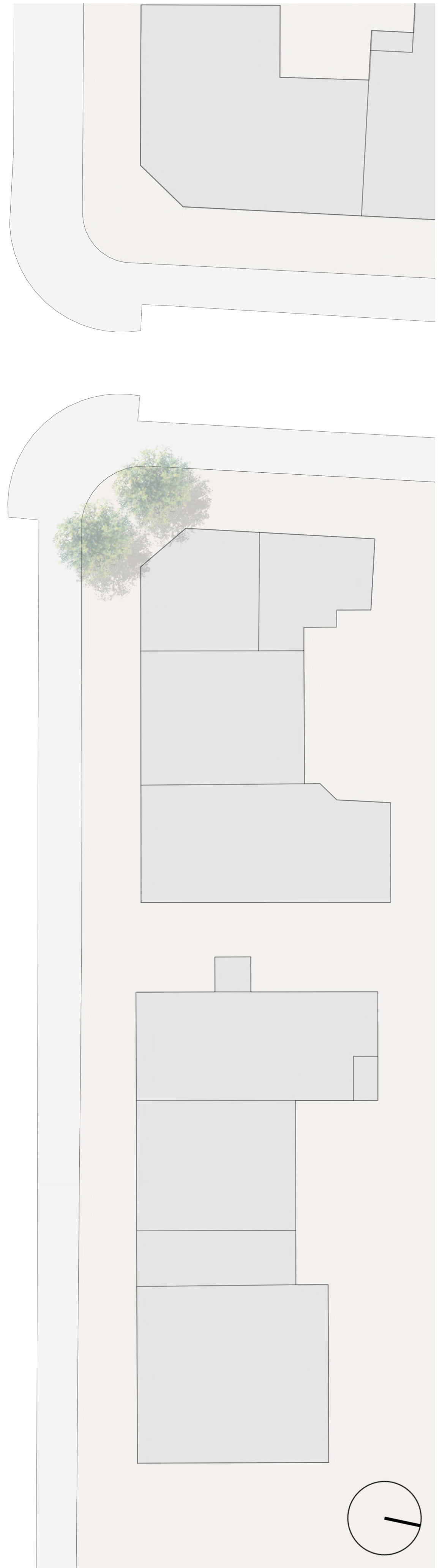
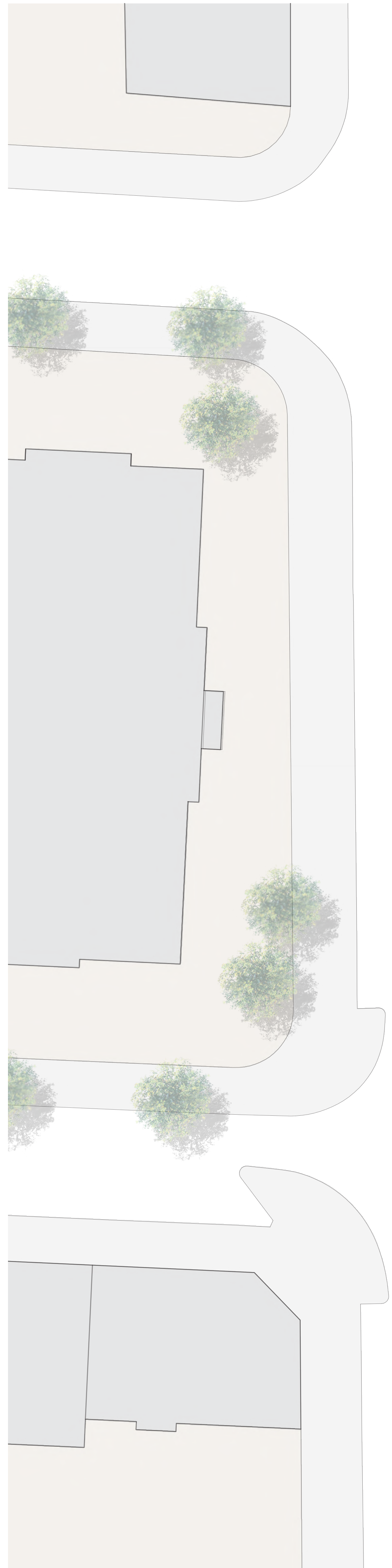
Ground floor 1:200



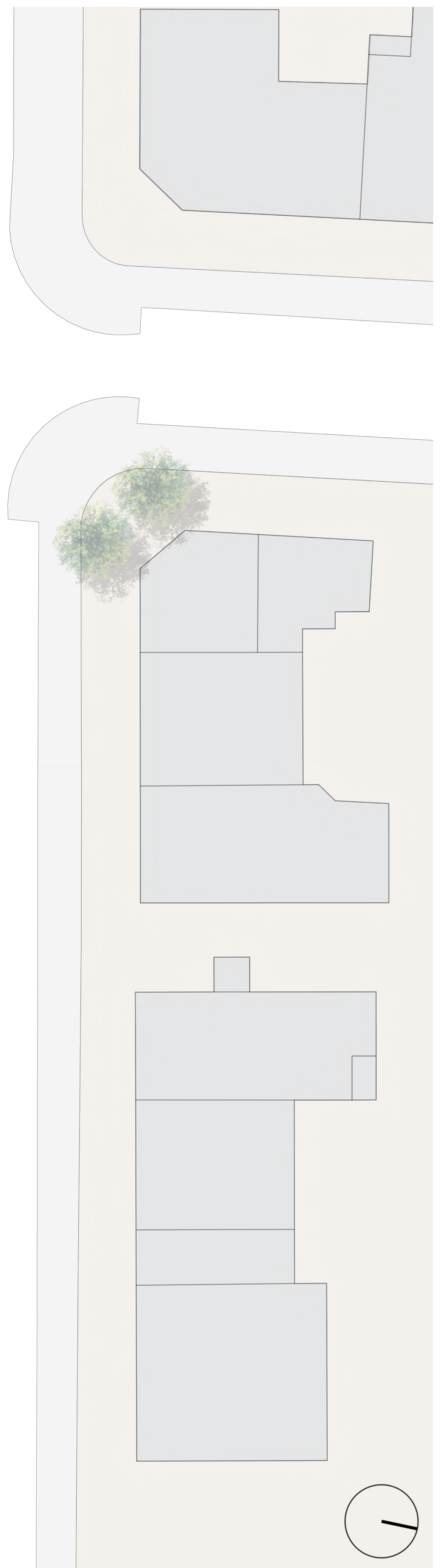
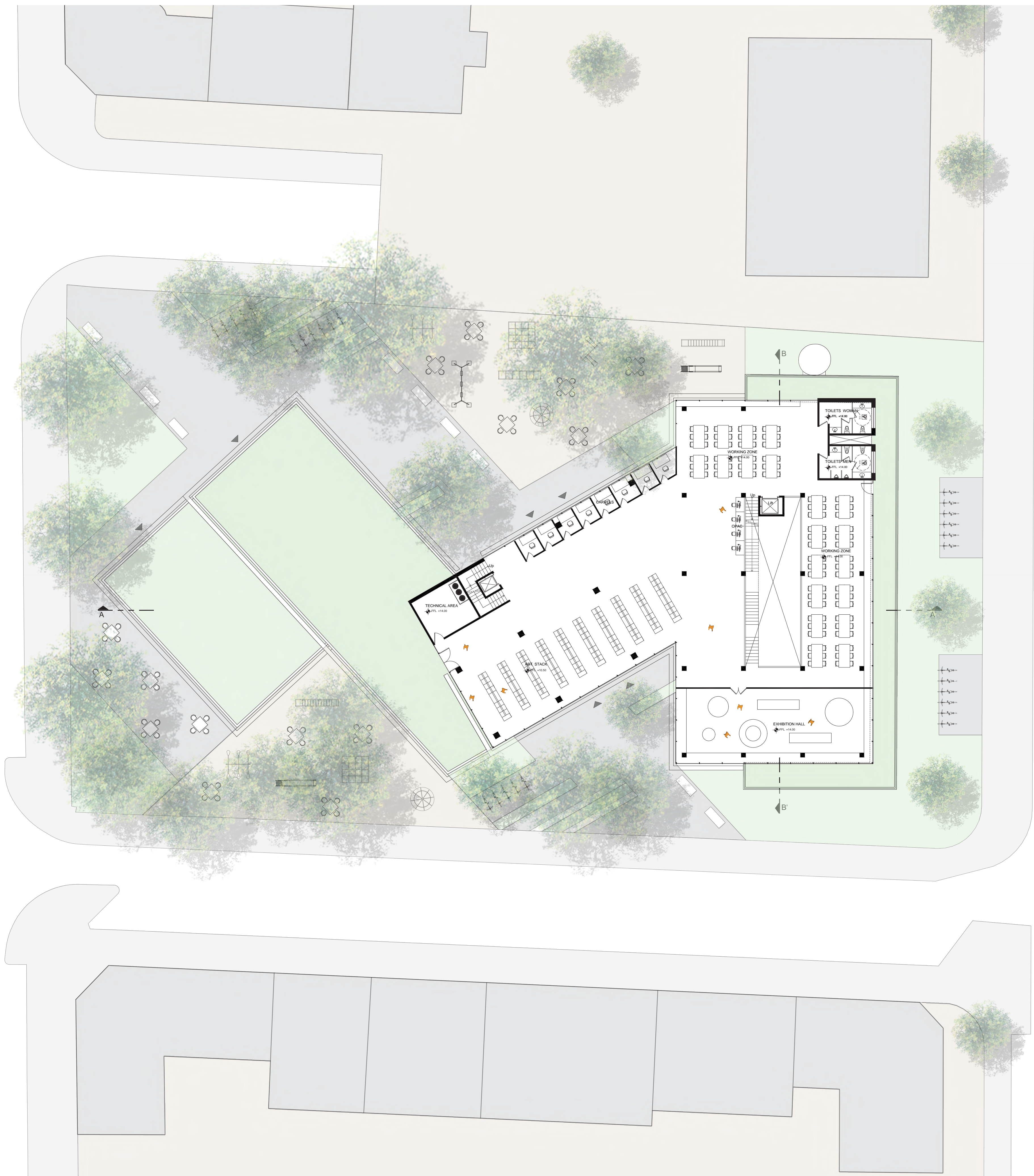
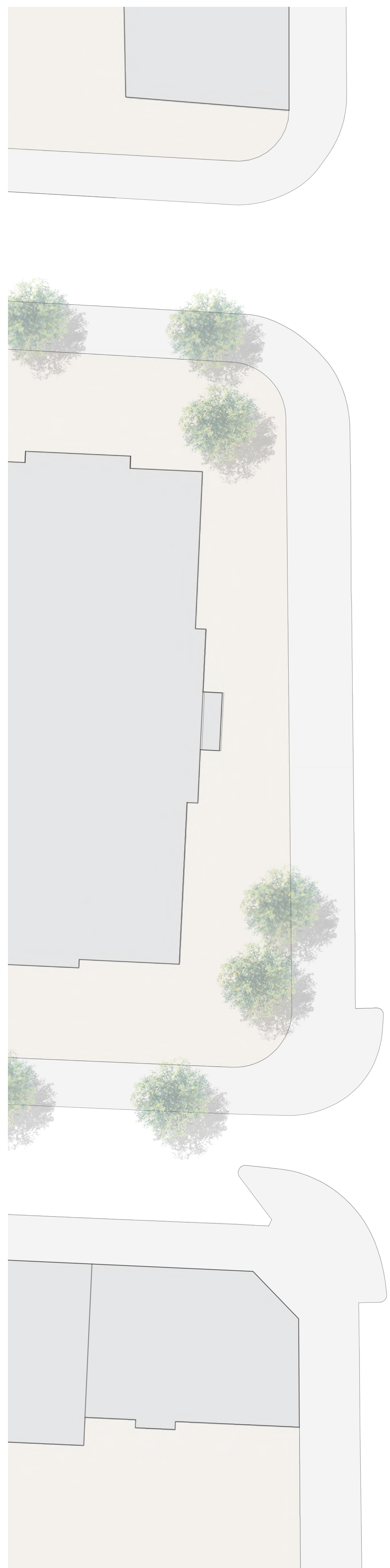
First floor 1:200



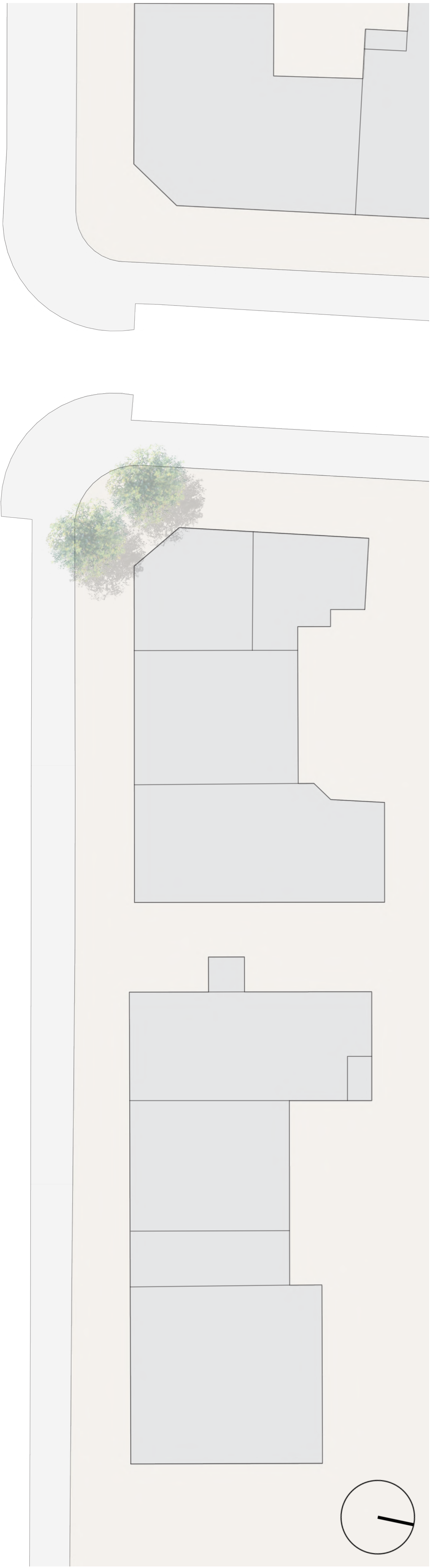
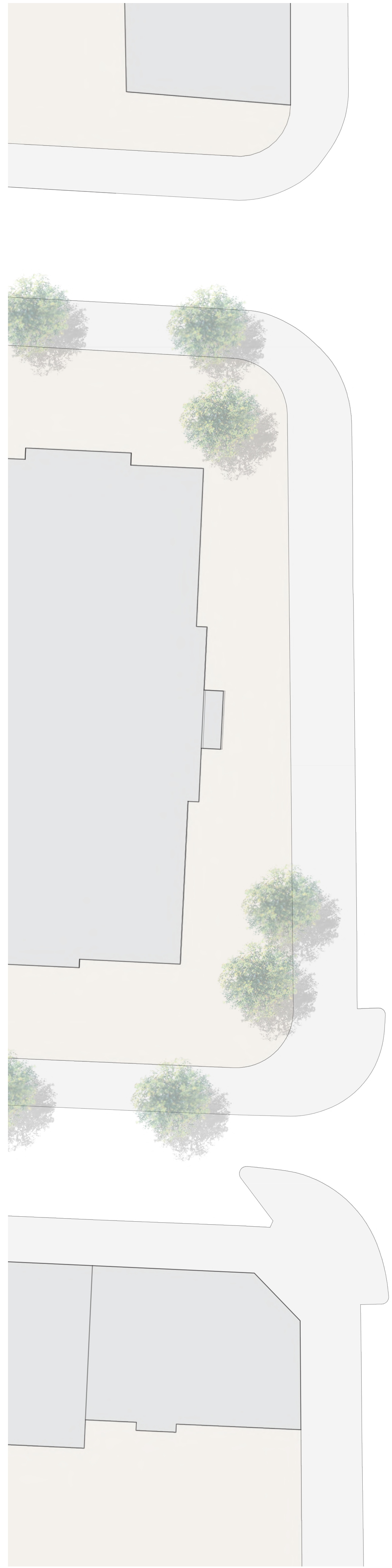
Second floor 1:200



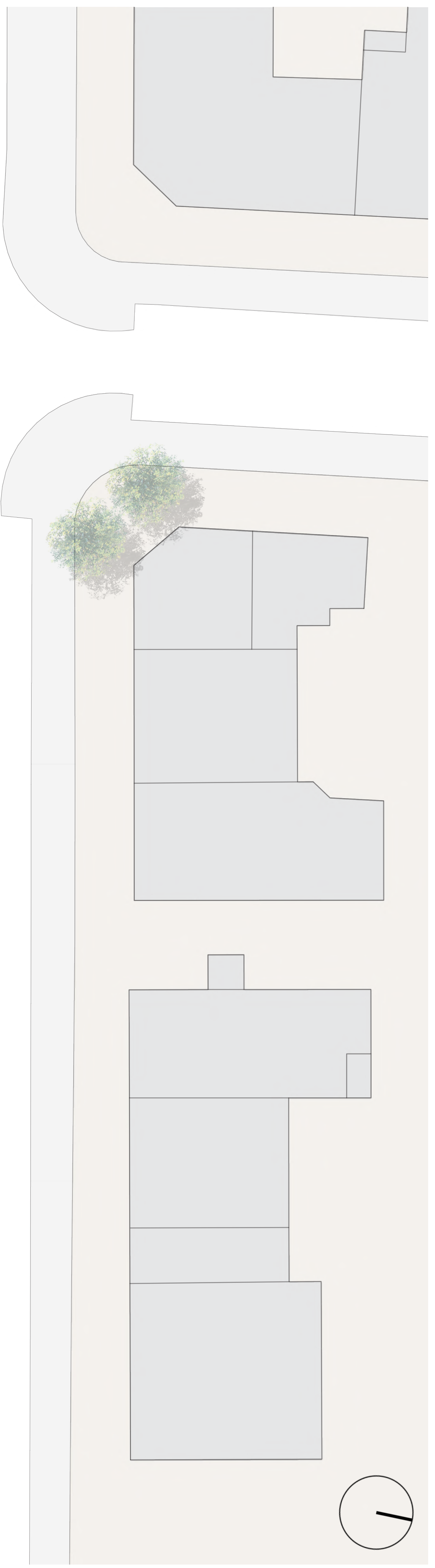
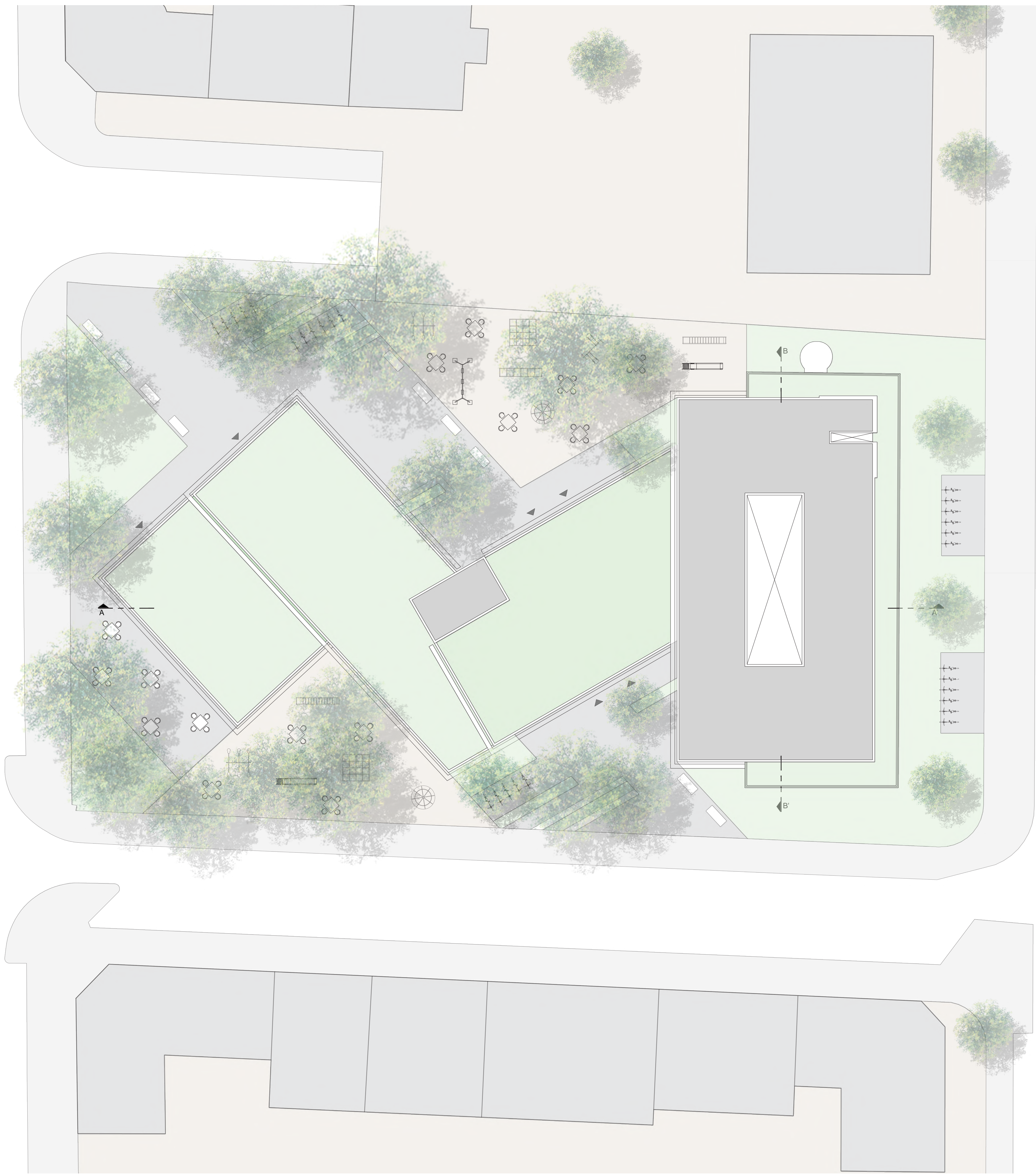
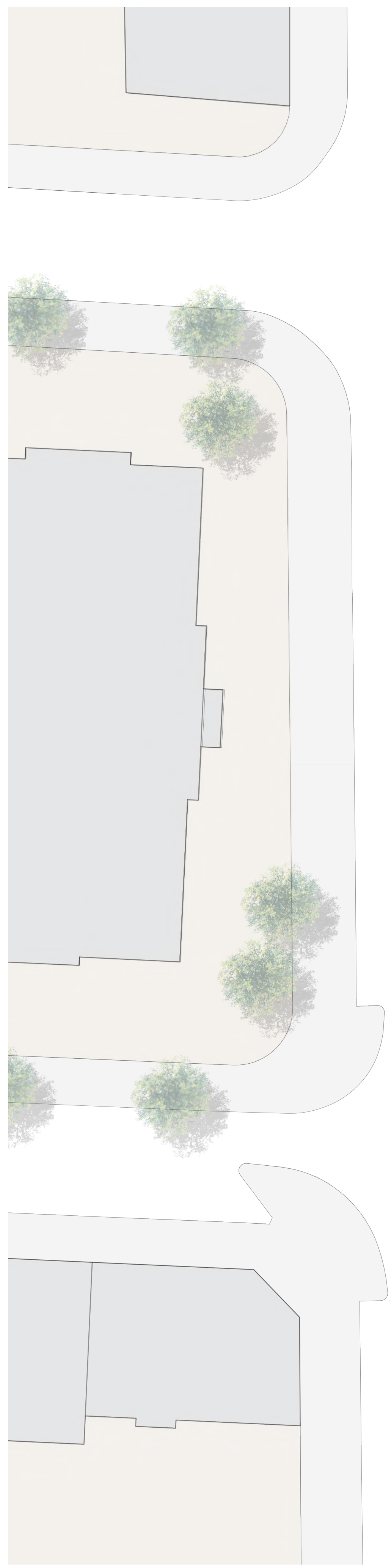
Third floor 1:200



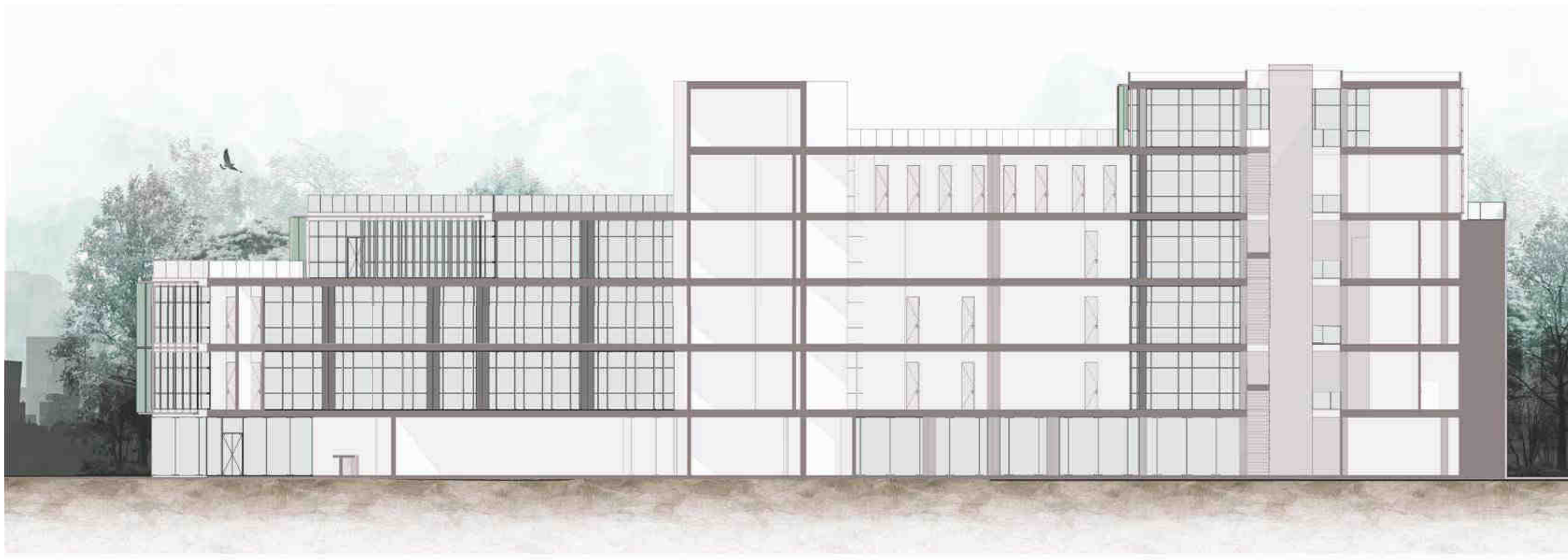
Fourth floor 1:200



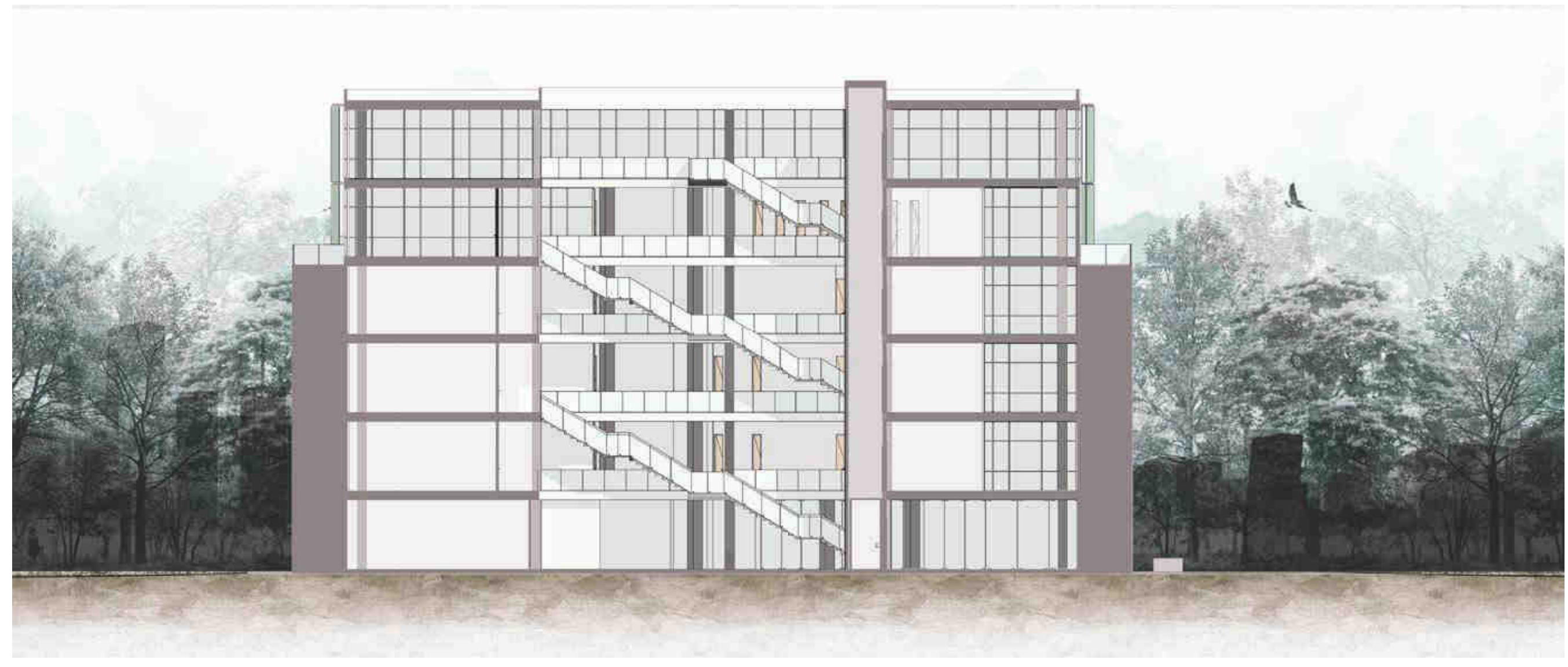
Fifth 1:200



Roof floor 1:200



Section A-A' 1:200



Section B-B' 1:200





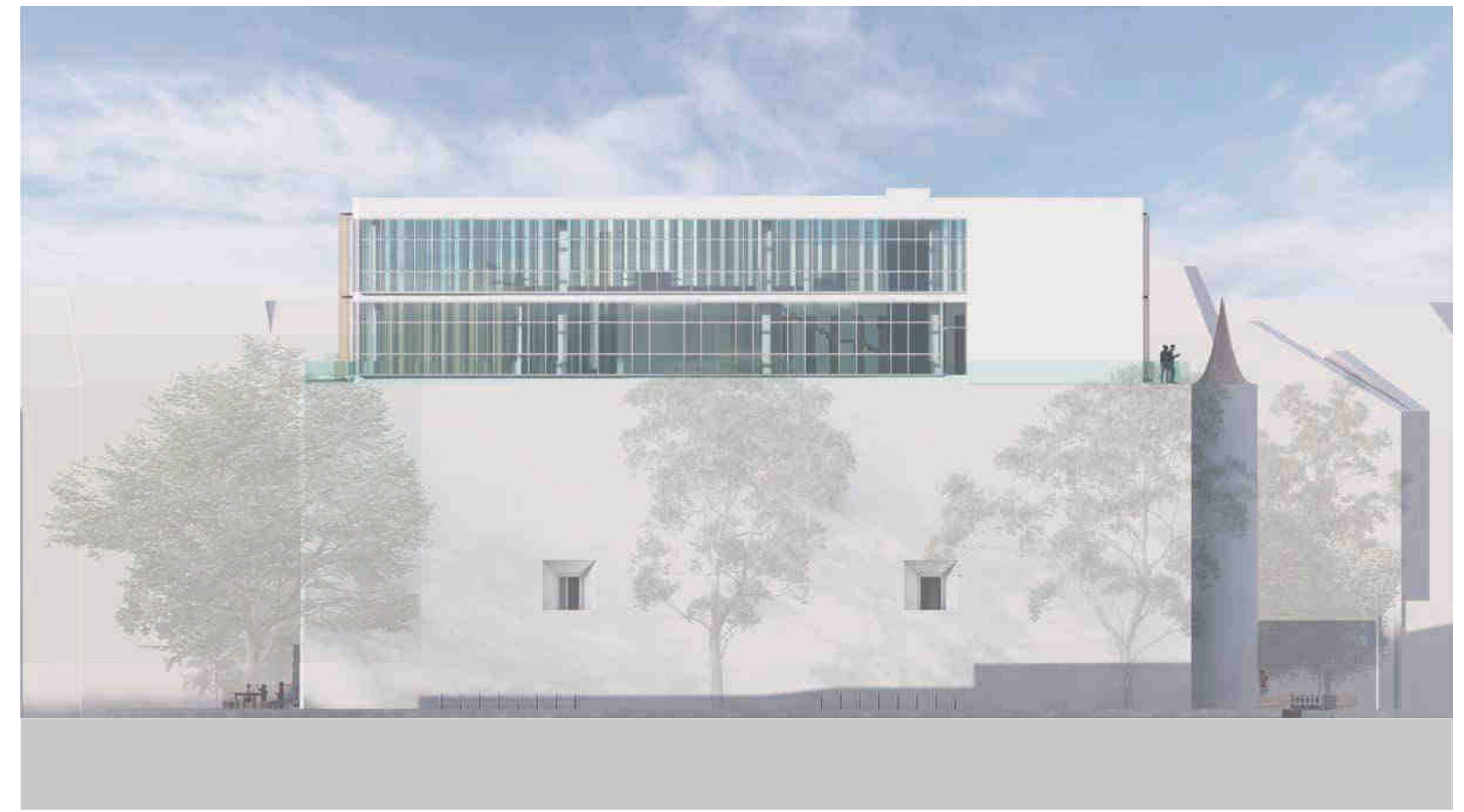
South elevation 1:200



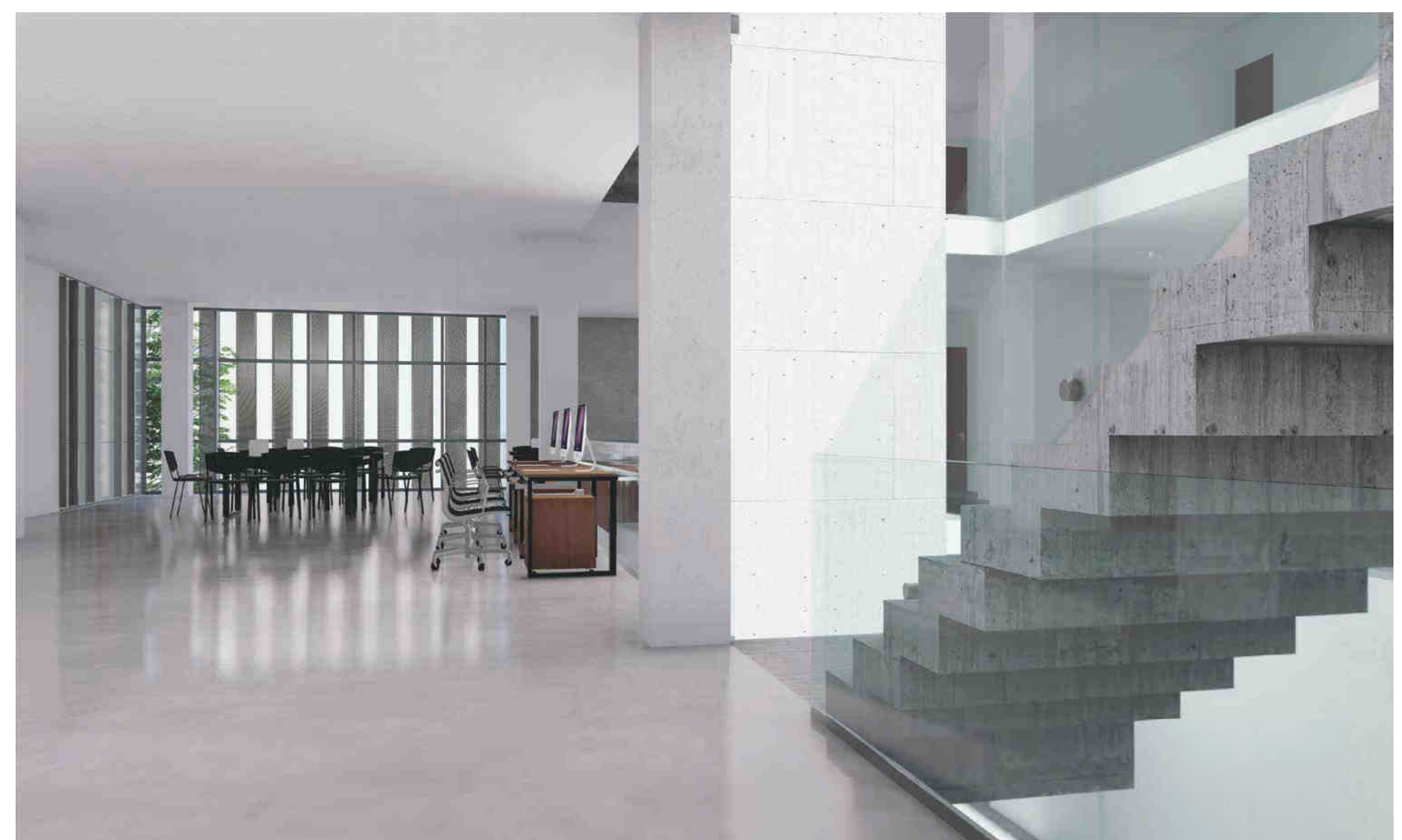
East elevation 1:200



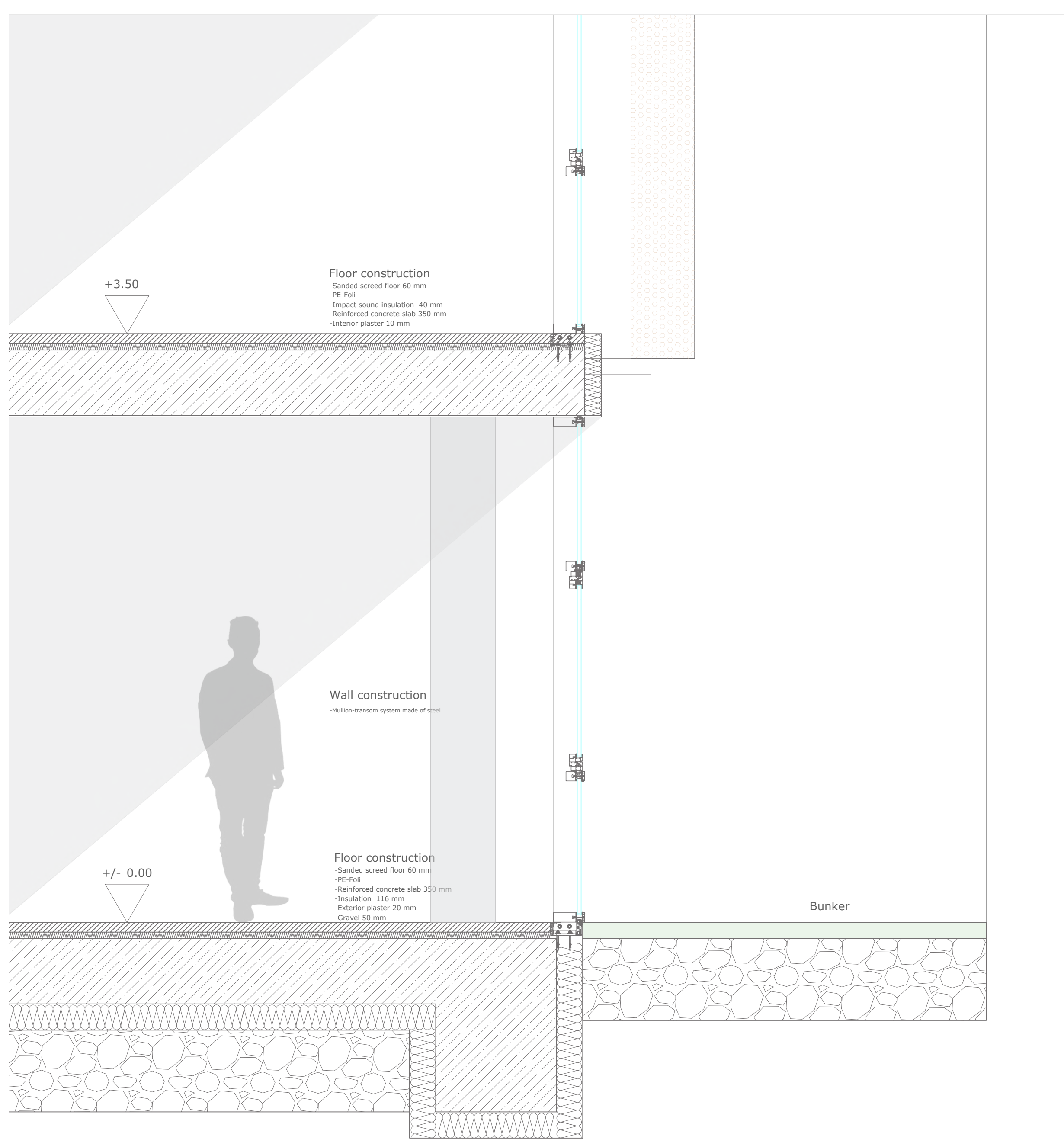
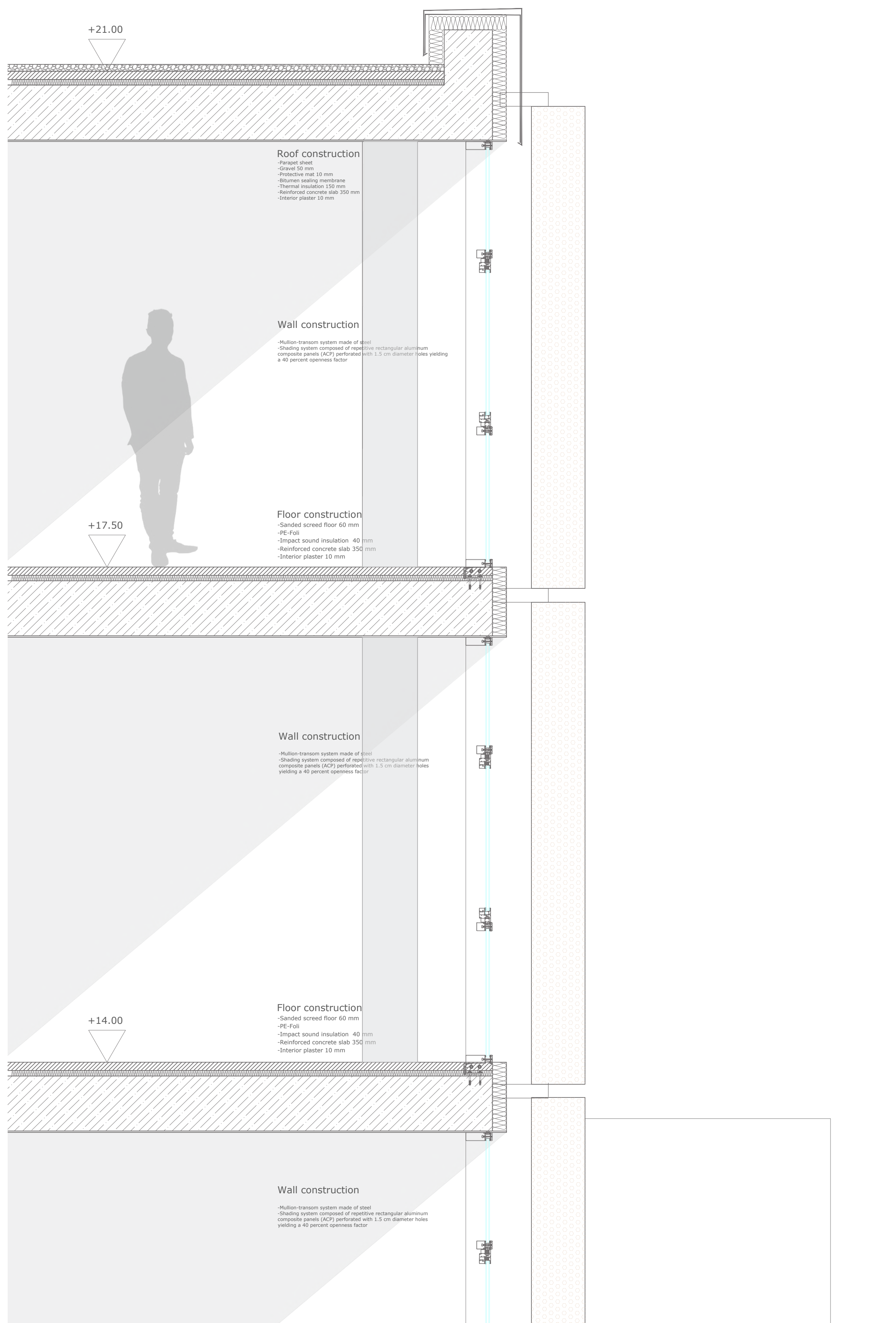
West elevation 1:200



North elevation 1:200







Facade section 1:20

Facade system

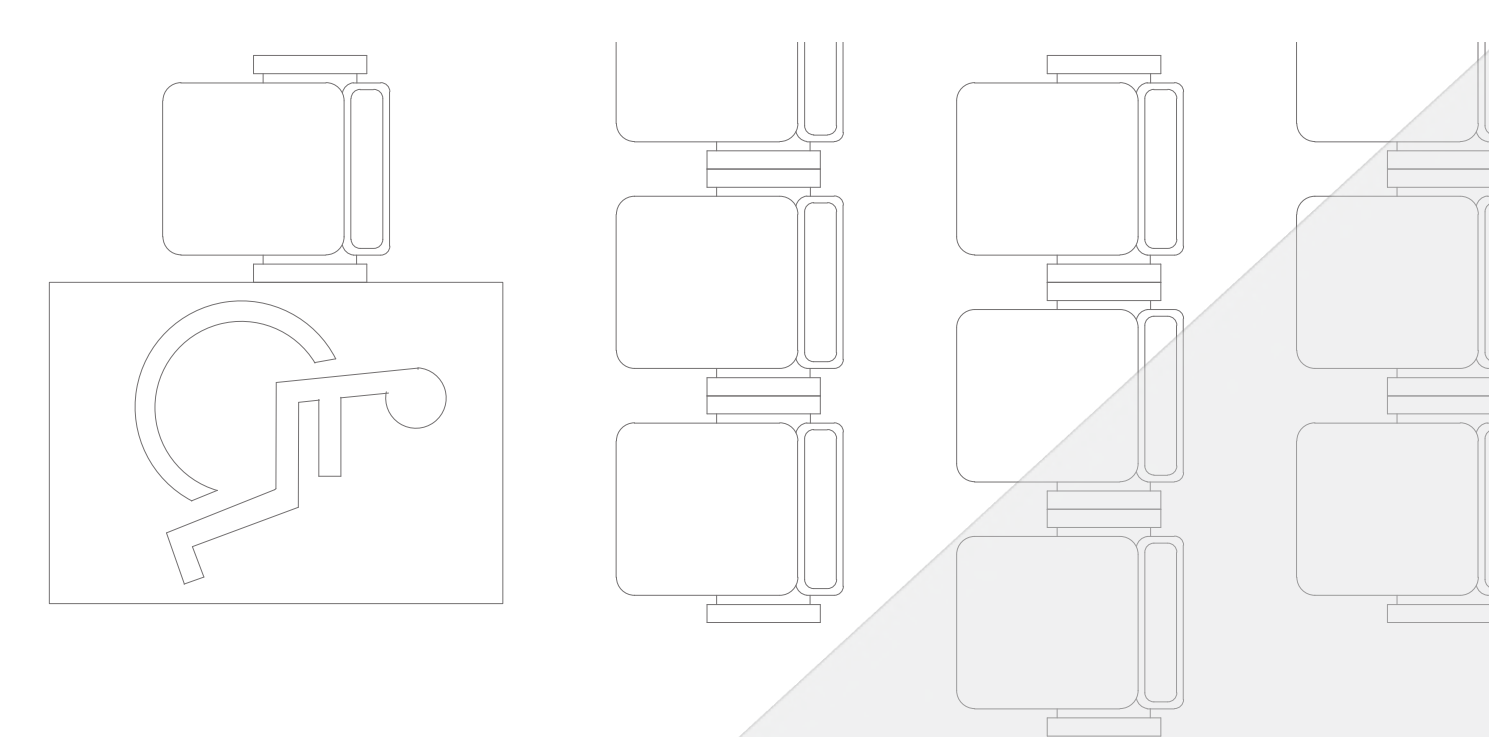
Mullion-transom curtain for elegant structural glazing facades and thus combine high transparency with functionality.

This profile system sets standards for both architecturally ambitious new building projects and renovations subject to monument preservation requirements.

Shading system composed of repetitive rectangular aluminum composite panels (ACP) perforated with 1.5 cm diameter holes yielding a 40 percent openness factor

Structural system

Flat slab system.
 Reinforced concrete slab supported directly by concrete columns without the use of beams.



Lecture hall

