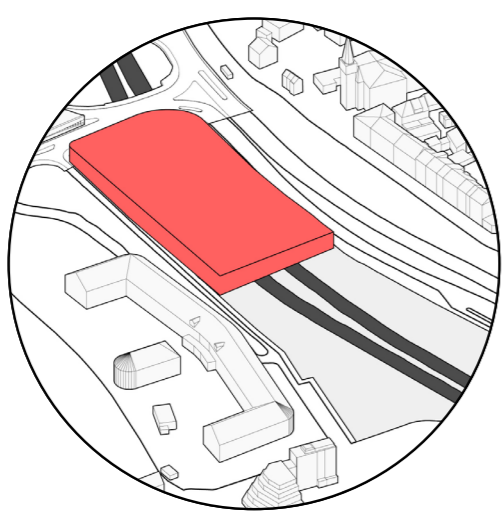
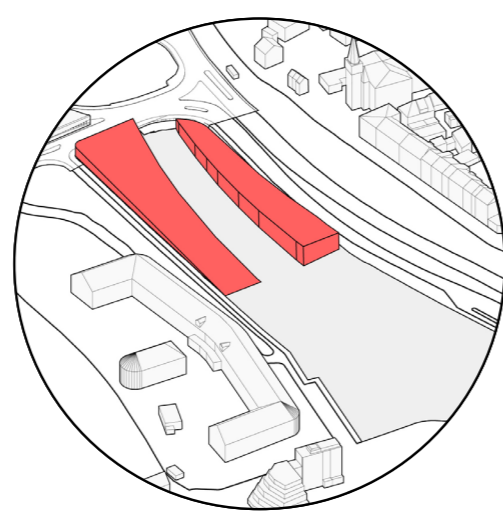


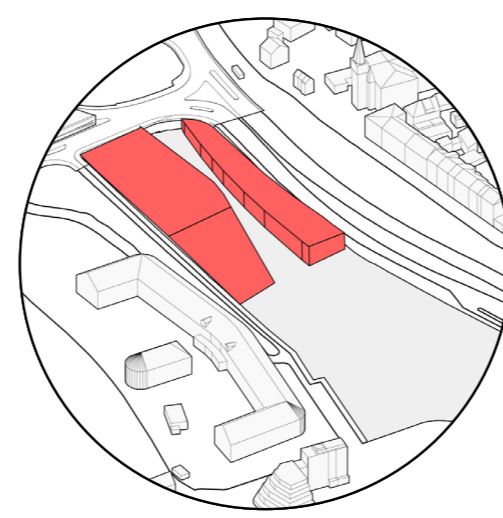
Existing structures in site are demolished



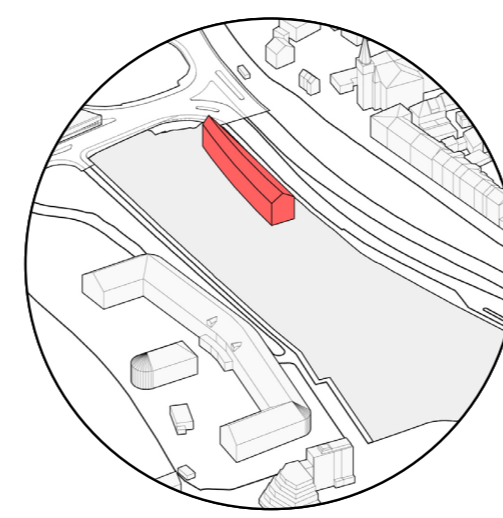
mass is raised From the site boundaries



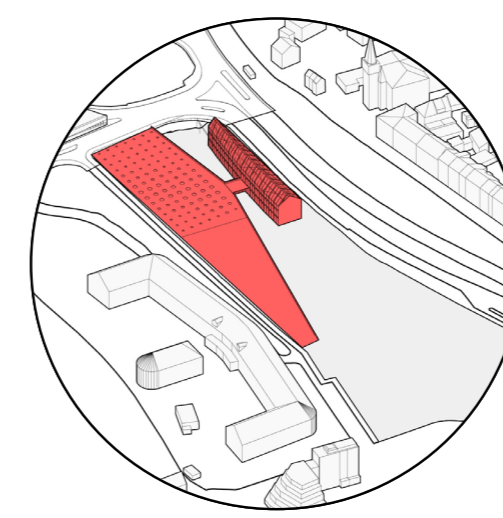
Mass is split in two due to train tracks



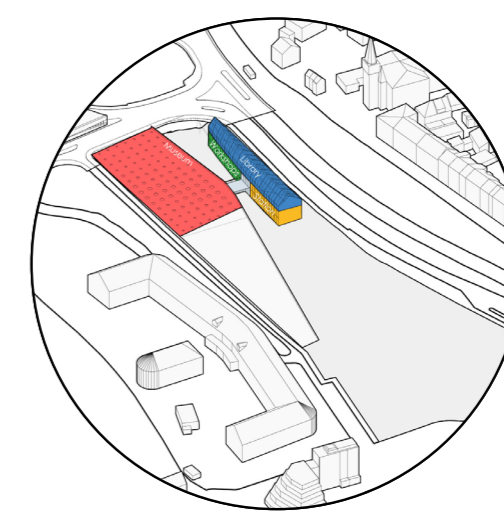
Masses accommodate Slope and street



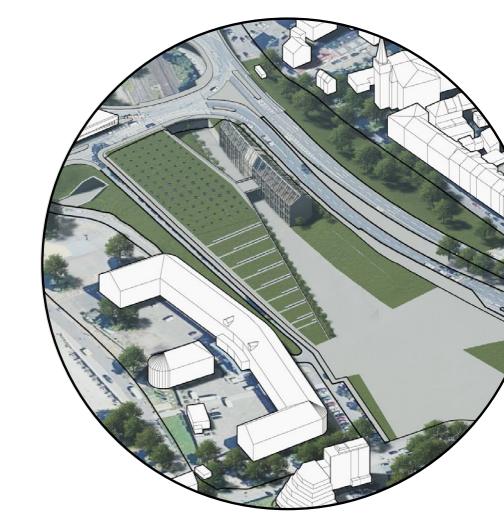
Pitched roof added to mass to fit context



Masses are opened up for natural lighting and transparency



Functions split depending on location



Landscaping for site enhancement



Train Tracks Split city in two



Site location



Gained Public spaces



Larger public space area

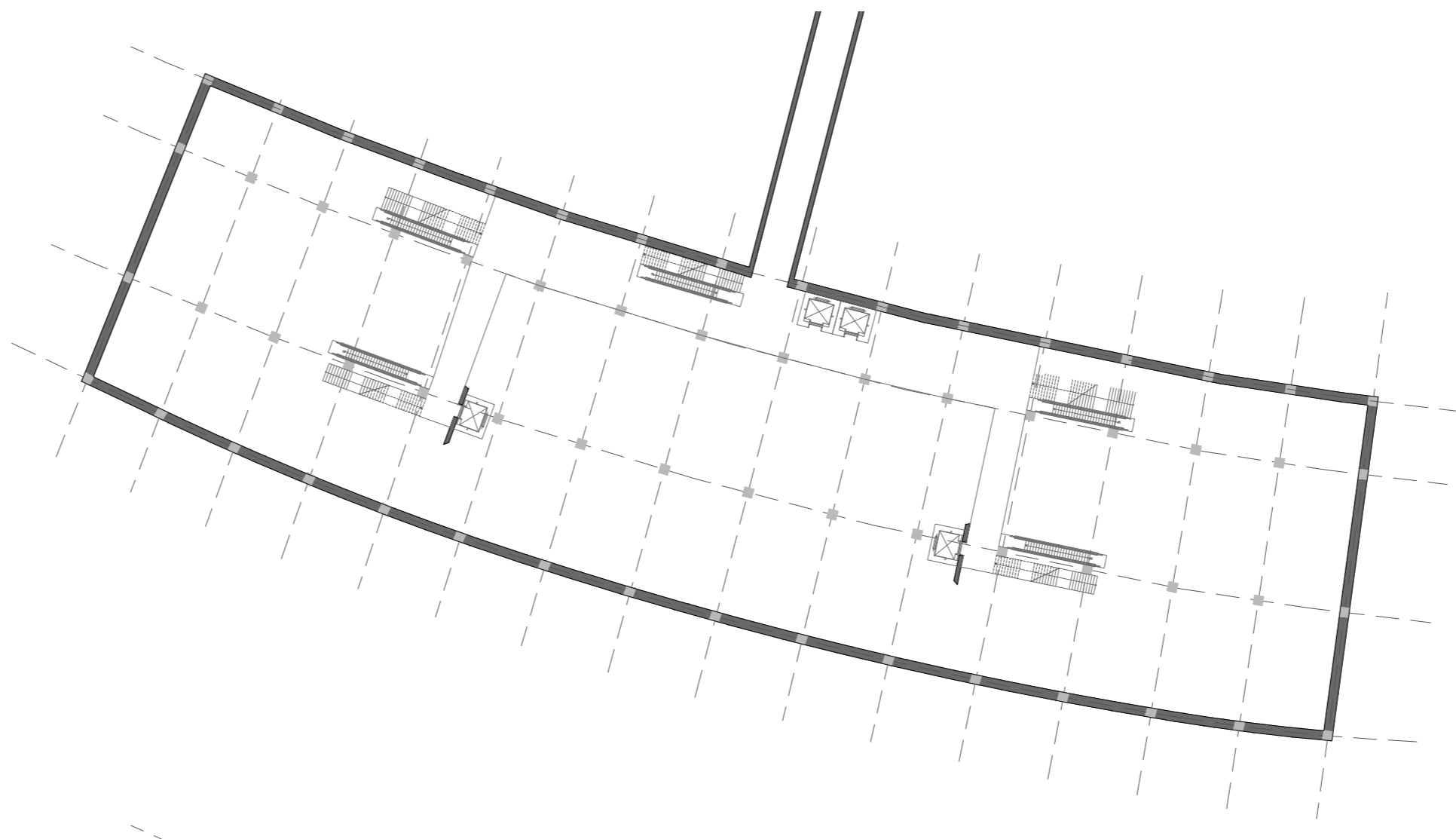


Gained Access axes



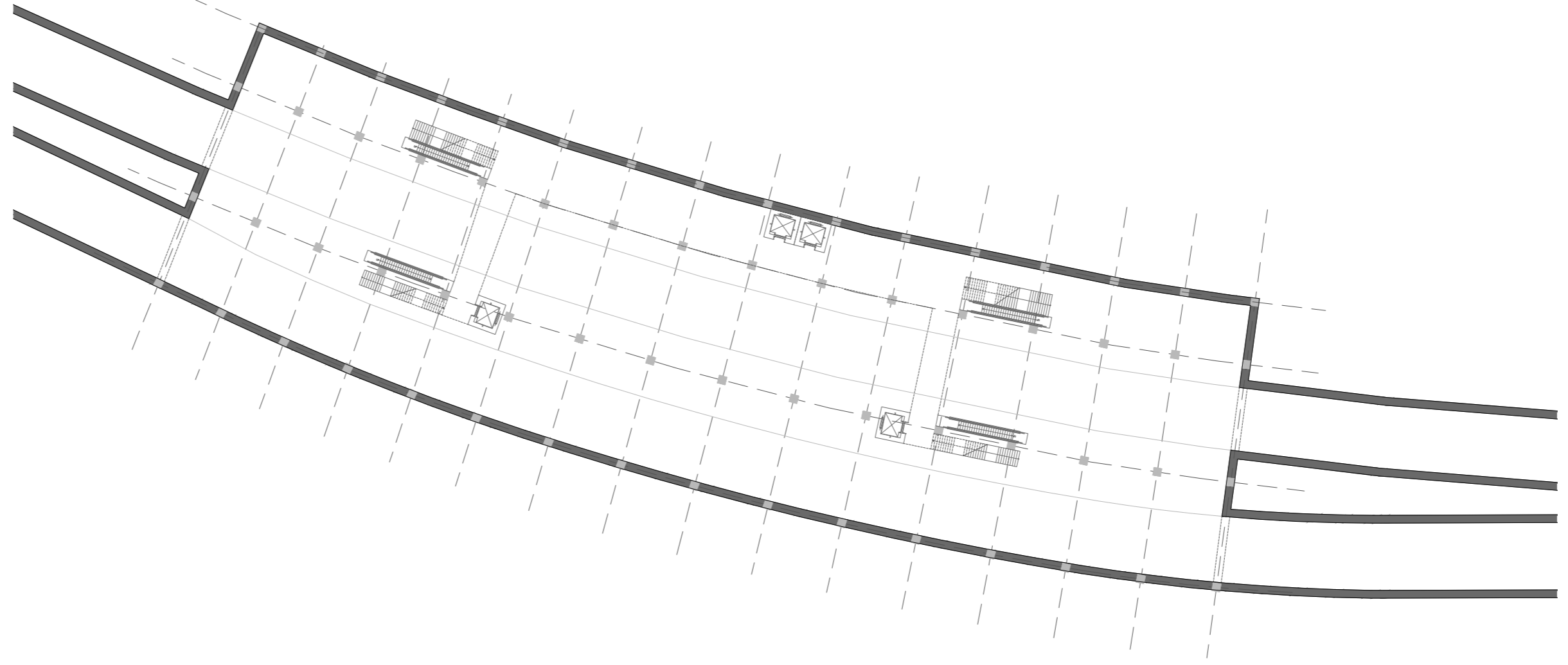
-2 .Train Station Level

-9.00m



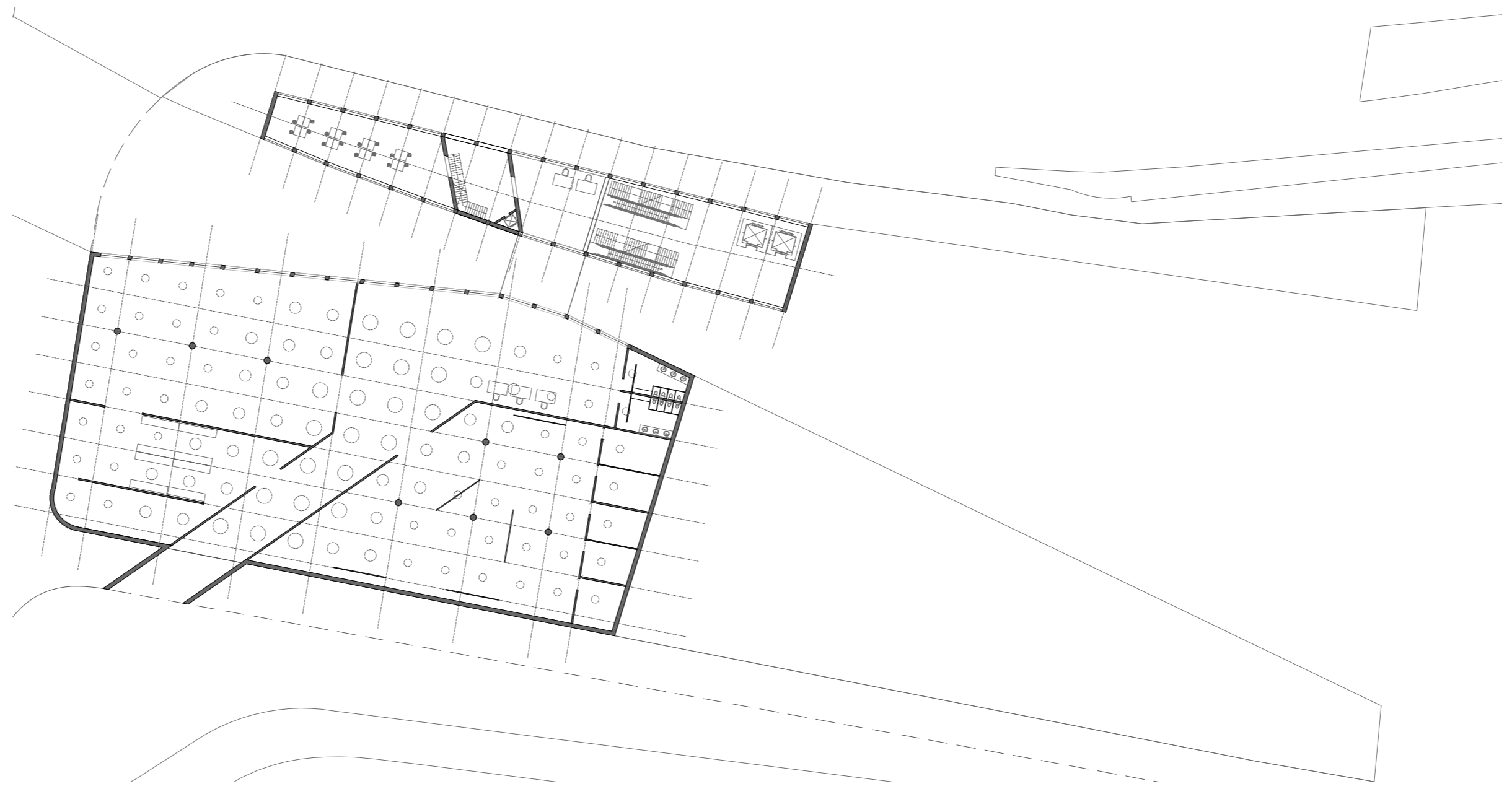
-1 .Train Station Transition

-4.00m



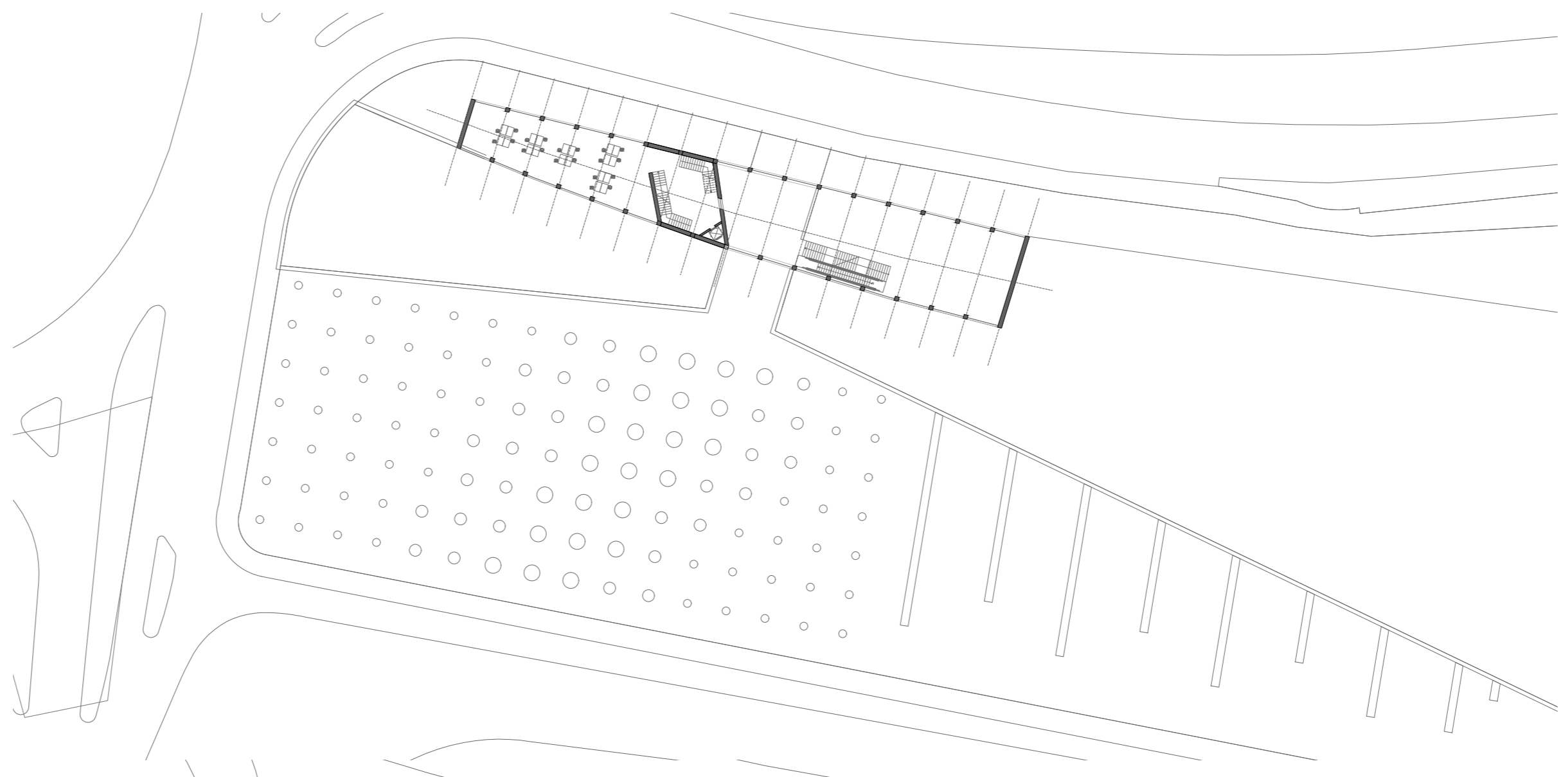
0 - Museum level / Station Exit

0.00m



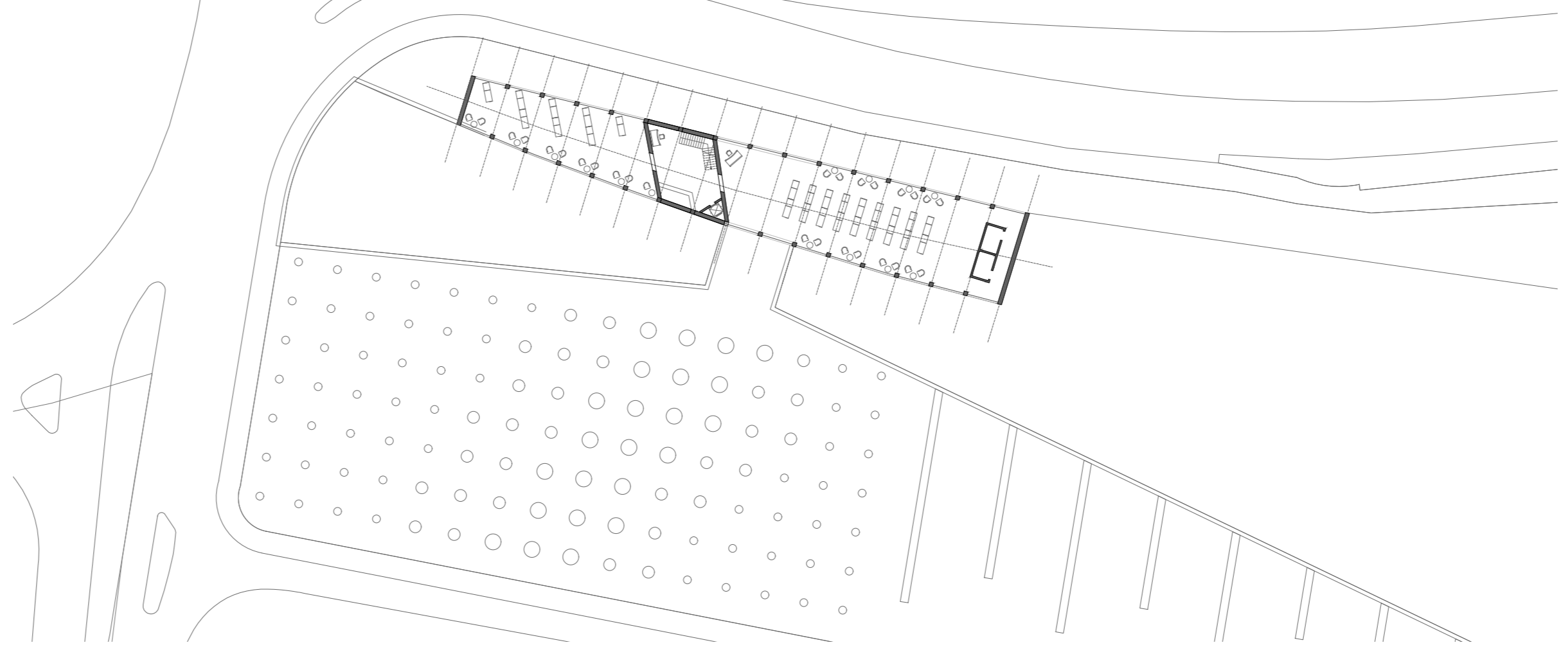
1 - Station Exit / roof garden

5.00m



2 - Library

8.00m





Roof Garden View



Ground floor station exit



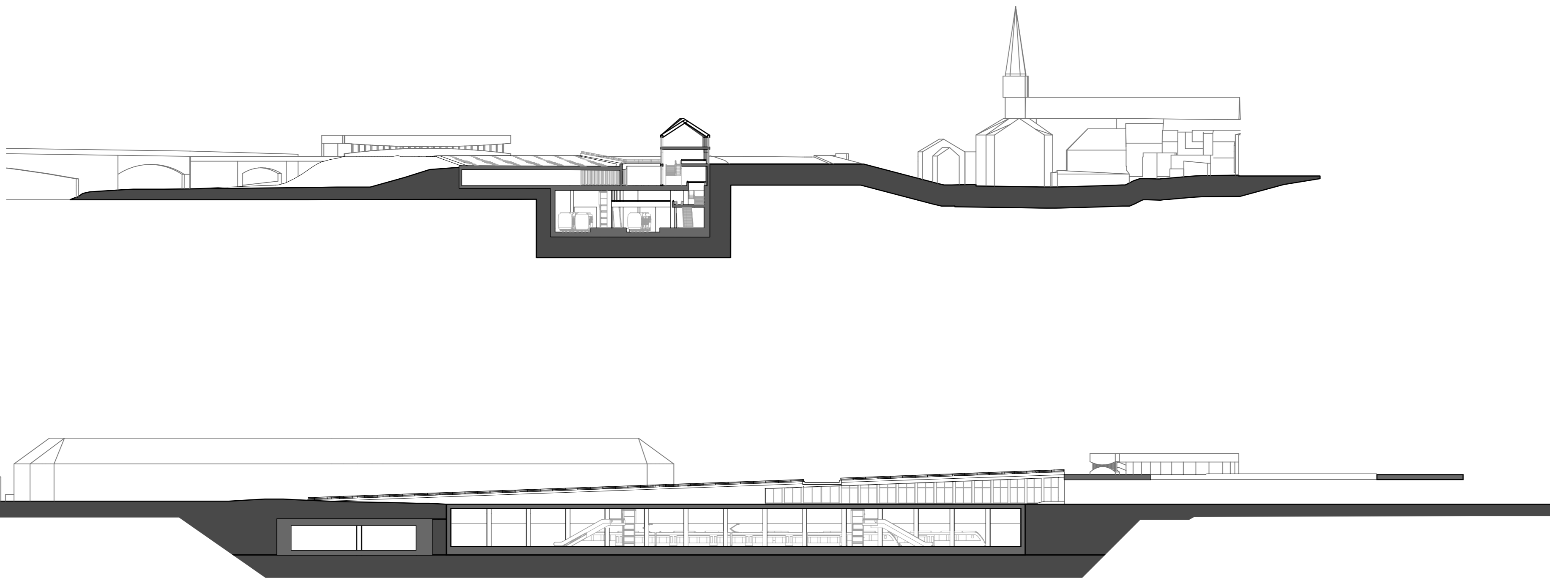
Library



Museum



Sections



Facade Detail

